

**Anti-UQCRFS1 Rabbit Monoclonal Antibody**  
**Catalog # ABO15342****Specification****Anti-UQCRFS1 Rabbit Monoclonal Antibody - Product Information**

Application	WB, IHC, IF, ICC, IP, FC
Primary Accession	<a href="#">P47985</a>
Host	Rabbit
Isotype	IgG
Reactivity	Rat, Human, Mouse
Clonality	Monoclonal
Format	Liquid

**Description**

Anti-UQCRFS1 Rabbit Monoclonal Antibody . Tested in WB, IHC, ICC/IF, IP, Flow Cytometry applications. This antibody reacts with Human, Mouse, Rat.

**Anti-UQCRFS1 Rabbit Monoclonal Antibody - Additional Information**

**Gene ID** 7386

**Other Names**

Cytochrome b-c1 complex subunit Rieske, mitochondrial, 7.1.1.8, Complex III subunit 5, Cytochrome b-c1 complex subunit 5, Rieske iron-sulfur protein, RISP, Rieske protein UQCRFS1, Ubiquinol-cytochrome c reductase iron-sulfur subunit, Cytochrome b-c1 complex subunit 9, UQCRFS1 ([http://www.genenames.org/cgi-bin/gene\\_symbol\\_report?hgnc\\_id=12587](http://www.genenames.org/cgi-bin/gene_symbol_report?hgnc_id=12587) target="\_blank">HGNC:12587</a>)

**Calculated MW**

23 kDa KDa

**Application Details**

WB 1:500-1:2000<br>IHC 1:100-1:500<br>ICC/IF 1:50-1:200<br>IP 1:50<br>FC 1:100

**Contents**

Rabbit IgG in phosphate buffered saline, pH 7.4, 150mM NaCl, 0.02% sodium azide and 50% glycerol, 0.4-0.5mg/ml BSA.

**Immunogen**

A synthesized peptide derived from human UQCRFS1

**Purification**

Affinity-chromatography

**Storage**

**Store at -20°C for one year. For short term storage and frequent use, store at 4°C for up to one month. Avoid repeated freeze-thaw cycles.**

**Anti-UQCRFS1 Rabbit Monoclonal Antibody - Protein Information**

**Name** UQCRFS1 ([HGNC:12587](#))

**Function**

[Cytochrome b-c1 complex subunit Rieske, mitochondrial]: Component of the ubiquinol-cytochrome c oxidoreductase, a multisubunit transmembrane complex that is part of the mitochondrial electron transport chain which drives oxidative phosphorylation (PubMed:<a href="http://www.uniprot.org/citations/31883641" target="\_blank">31883641</a>). The respiratory chain contains 3 multisubunit complexes succinate dehydrogenase (complex II, CII), ubiquinol- cytochrome c oxidoreductase (cytochrome b-c1 complex, complex III, CIII) and cytochrome c oxidase (complex IV, CIV), that cooperate to transfer electrons derived from NADH and succinate to molecular oxygen, creating an electrochemical gradient over the inner membrane that drives transmembrane transport and the ATP synthase. The cytochrome b- c1 complex catalyzes electron transfer from ubiquinol to cytochrome c, linking this redox reaction to translocation of protons across the mitochondrial inner membrane, with protons being carried across the membrane as hydrogens on the quinol. In the process called Q cycle, 2 protons are consumed from the matrix, 4 protons are released into the intermembrane space and 2 electrons are passed to cytochrome c. The Rieske protein is a catalytic core subunit containing a [2Fe-2S] iron- sulfur cluster. It cycles between 2 conformational states during catalysis to transfer electrons from the quinol bound in the Q(0) site in cytochrome b to cytochrome c1 (By similarity). Incorporation of UQCRFS1 is the penultimate step in complex III assembly (PubMed:<a href="http://www.uniprot.org/citations/28673544" target="\_blank">28673544</a>).

**Cellular Location**

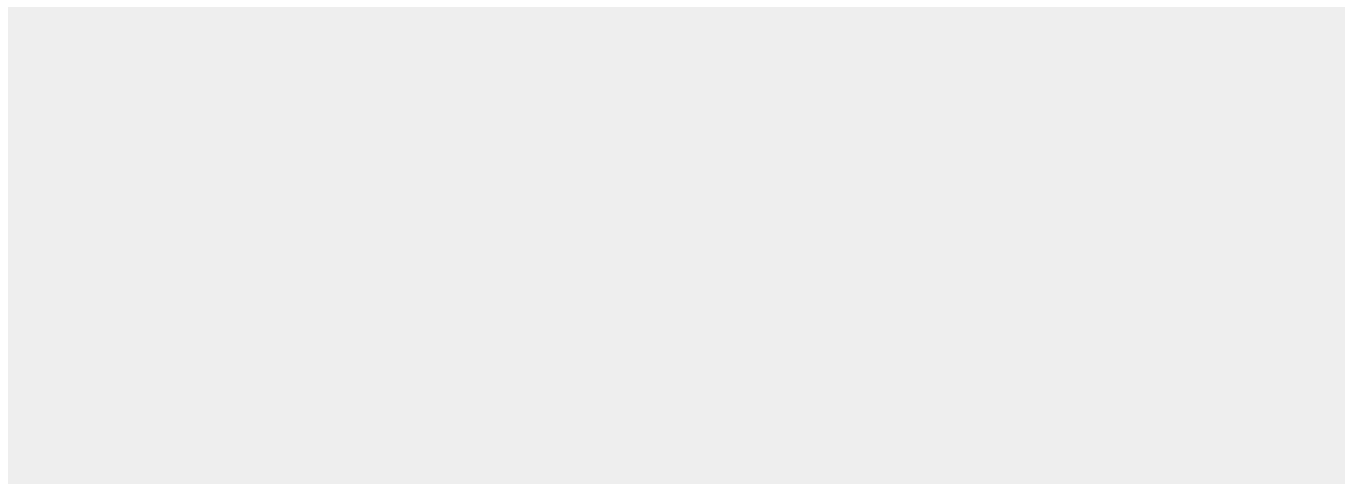
Mitochondrion inner membrane; Single-pass membrane protein  
{ECO:0000250|UniProtKB:Q5ZLR5}

**Anti-UQCRFS1 Rabbit Monoclonal Antibody - Protocols**

Provided below are standard protocols that you may find useful for product applications.

- [Western Blot](#)
- [Blocking Peptides](#)
- [Dot Blot](#)
- [Immunohistochemistry](#)
- [Immunofluorescence](#)
- [Immunoprecipitation](#)
- [Flow Cytometry](#)
- [Cell Culture](#)

**Anti-UQCRFS1 Rabbit Monoclonal Antibody - Images**



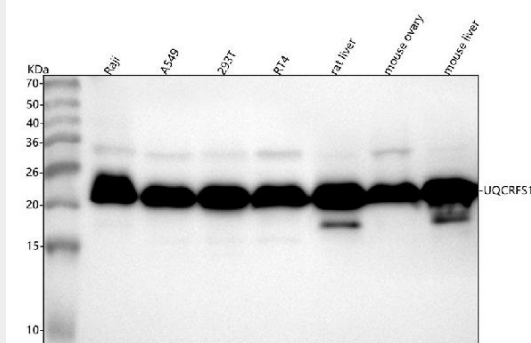


Figure 1. Western blot analysis of UQCRFS1 using anti-UQCRFS1 antibody (M08781-1).

Electrophoresis was performed on a 5-20% SDS-PAGE gel at 70V (Stacking gel) / 90V (Resolving gel) for 2-3 hours. The sample well of each lane was loaded with 30 ug of sample under reducing conditions.

Lane 1: human Raji whole cell lysates,  
Lane 2: human A549 whole cell lysates,  
Lane 3: human 293T whole cell lysates,  
Lane 4: human RT4 whole cell lysates,  
Lane 5: rat liver tissue lysates,  
Lane 6: mouse ovary tissue lysates,  
Lane 7: mouse liver tissue lysates.

After electrophoresis, proteins were transferred to a nitrocellulose membrane at 150 mA for 50-90 minutes. Blocked the membrane with 5% non-fat milk/TBS for 1.5 hour at RT. The membrane was incubated with rabbit anti-UQCRFS1 antigen affinity purified monoclonal antibody (Catalog # M08781-1) at 1:500 overnight at 4°C, then washed with TBS-0.1%Tween 3 times with 5 minutes each and probed with a goat anti-rabbit IgG-HRP secondary antibody at a dilution of 1:500 for 1.5 hour at RT. The signal is developed using an Enhanced Chemiluminescent detection (ECL) kit (Catalog # EK1002) with Tanon 5200 system. A specific band was detected for UQCRFS1 at approximately 23 kDa. The expected band size for UQCRFS1 is at 30 kDa.

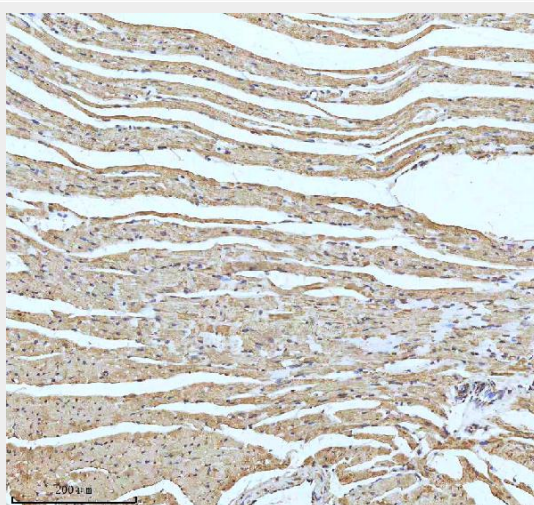


Figure 2. IHC analysis of UQCRFS1 using anti-UQCRFS1 antibody (M08781-1).

UQCRFS1 was detected in a paraffin-embedded section of mouse heart tissue. Heat mediated antigen retrieval was performed in EDTA buffer (pH 8.0, epitope retrieval solution). The tissue section was blocked with 10% goat serum. The tissue section was then incubated with 1:100

rabbit anti-UQCRFS1 Antibody (M08781-1) overnight at 4°C. Peroxidase Conjugated Goat Anti-rabbit IgG was used as secondary antibody and incubated for 30 minutes at 37°C. The tissue section was developed using HRP Conjugated Rabbit IgG Super Vision Assay Kit (Catalog # SV0002) with DAB as the chromogen.

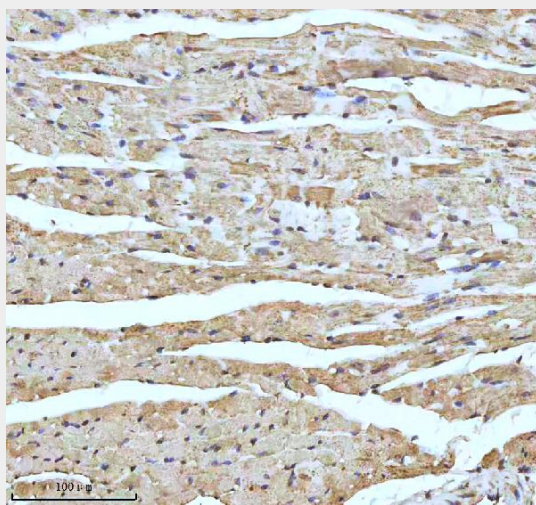


Figure 3. IHC analysis of UQCRFS1 using anti-UQCRFS1 antibody (M08781-1). UQCRFS1 was detected in a paraffin-embedded section of mouse heart tissue. Heat mediated antigen retrieval was performed in EDTA buffer (pH 8.0, epitope retrieval solution). The tissue section was blocked with 10% goat serum. The tissue section was then incubated with 1:100 rabbit anti-UQCRFS1 Antibody (M08781-1) overnight at 4°C. Peroxidase Conjugated Goat Anti-rabbit IgG was used as secondary antibody and incubated for 30 minutes at 37°C. The tissue section was developed using HRP Conjugated Rabbit IgG Super Vision Assay Kit (Catalog # SV0002) with DAB as the chromogen.

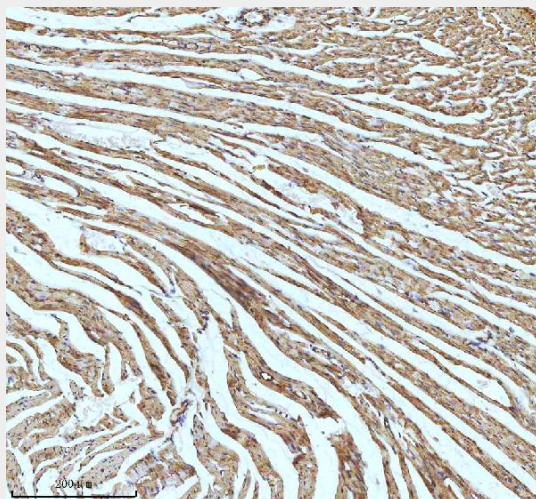


Figure 4. IHC analysis of UQCRFS1 using anti-UQCRFS1 antibody (M08781-1). UQCRFS1 was detected in a paraffin-embedded section of rat heart tissue. Heat mediated antigen retrieval was performed in EDTA buffer (pH 8.0, epitope retrieval solution). The tissue section was blocked with 10% goat serum. The tissue section was then incubated with 1:100 rabbit anti-UQCRFS1 Antibody (M08781-1) overnight at 4°C. Peroxidase Conjugated Goat Anti-rabbit IgG was used as secondary antibody and incubated for 30 minutes at 37°C. The tissue section was developed using HRP Conjugated Rabbit IgG Super Vision Assay Kit (Catalog # SV0002) with DAB as the chromogen.



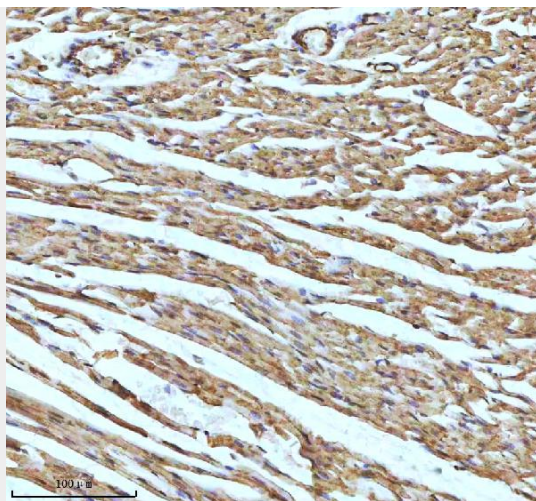


Figure 5. IHC analysis of UQCRFS1 using anti-UQCRFS1 antibody (M08781-1). UQCRFS1 was detected in a paraffin-embedded section of rat heart tissue. Heat mediated antigen retrieval was performed in EDTA buffer (pH 8.0, epitope retrieval solution). The tissue section was blocked with 10% goat serum. The tissue section was then incubated with 1:100 rabbit anti-UQCRFS1 Antibody (M08781-1) overnight at 4°C. Peroxidase Conjugated Goat Anti-rabbit IgG was used as secondary antibody and incubated for 30 minutes at 37°C. The tissue section was developed using HRP Conjugated Rabbit IgG Super Vision Assay Kit (Catalog # SV0002) with DAB as the chromogen.