

Anti-NKX3.1 Rabbit Monoclonal Antibody
Catalog # ABO15345**Specification**

Anti-NKX3.1 Rabbit Monoclonal Antibody - Product Information

Application	WB, IHC
Primary Accession	Q99801
Host	Rabbit
Isotype	IgG
Reactivity	Human
Clonality	Monoclonal
Format	Liquid

Description

Anti-NKX3.1 Rabbit Monoclonal Antibody . Tested in WB, IHC applications. This antibody reacts with Human.

Anti-NKX3.1 Rabbit Monoclonal Antibody - Additional Information

Gene ID 4824

Other Names

Homeobox protein Nkx-3.1, Homeobox protein NK-3 homolog A, NKX3-1 ([HGNC:7838](http://www.genenames.org/cgi-bin/gene_symbol_report?hgnc_id=7838))

Application Details

WB 1:500-1:1000
IHC 1:50-1:200

Contents

Rabbit IgG in phosphate buffered saline, pH 7.4, 150mM NaCl, 0.02% sodium azide and 50% glycerol, 0.4-0.5mg/ml BSA.

Immunogen

A synthesized peptide derived from human Nkx3.1

Purification

Affinity-chromatography

Storage

Store at -20°C for one year. For short term storage and frequent use, store at 4°C for up to one month. Avoid repeated freeze-thaw cycles.

Anti-NKX3.1 Rabbit Monoclonal Antibody - Protein Information

Name NKX3-1 ([HGNC:7838](#))

Function

Transcription factor, which binds preferentially the consensus sequence 5'-TAAGT[AG]-3' and can behave as a transcriptional repressor. Plays an important role in normal prostate development, regulating proliferation of glandular epithelium and in the formation of ducts in prostate. Acts as a tumor suppressor controlling prostate carcinogenesis, as shown by the ability to inhibit proliferation and invasion activities of PC-3 prostate cancer cells.

Cellular Location

Nucleus {ECO:0000255|PROSITE-ProRule:PRU00108, ECO:0000269|PubMed:11137288}

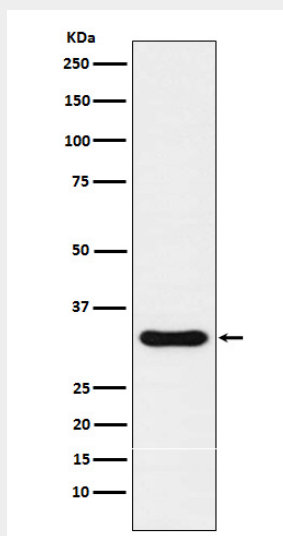
Tissue Location

Highly expressed in the prostate and, at a lower level, in the testis.

Anti-NKX3.1 Rabbit Monoclonal Antibody - Protocols

Provided below are standard protocols that you may find useful for product applications.

- [Western Blot](#)
- [Blocking Peptides](#)
- [Dot Blot](#)
- [Immunohistochemistry](#)
- [Immunofluorescence](#)
- [Immunoprecipitation](#)
- [Flow Cytometry](#)
- [Cell Culture](#)

Anti-NKX3.1 Rabbit Monoclonal Antibody - Images

Western blot analysis of Nkx3.1 expression in LNCaP cell lysate.