

Anti-WSTF Rabbit Monoclonal Antibody
Catalog # ABO15347**Specification**

Anti-WSTF Rabbit Monoclonal Antibody - Product Information

Application	WB, FC
Primary Accession	Q9UIG0
Host	Rabbit
Isotype	IgG
Reactivity	Rat, Human, Mouse
Clonality	Monoclonal
Format	Liquid

Description

Anti-WSTF Rabbit Monoclonal Antibody . Tested in WB, Flow Cytometry applications. This antibody reacts with Human, Mouse, Rat.

Anti-WSTF Rabbit Monoclonal Antibody - Additional Information

Gene ID 9031

Other Names

Tyrosine-protein kinase BAZ1B, 2.7.10.2, Bromodomain adjacent to zinc finger domain protein 1B, Williams syndrome transcription factor, Williams-Beuren syndrome chromosomal region 10 protein, Williams-Beuren syndrome chromosomal region 9 protein, hWALp2, BAZ1B, WBSC10, WBSCR10, WBSCR9, WSTF

Calculated MW

185 kDa KDa

Application Details

WB 1:500-1:2000
FC 1:50

Contents

Rabbit IgG in phosphate buffered saline, pH 7.4, 150mM NaCl, 0.02% sodium azide and 50% glycerol, 0.4-0.5mg/ml BSA.

Immunogen

A synthesized peptide derived from human WSTF

Purification

Affinity-chromatography

Storage

Store at -20°C for one year. For short term storage and frequent use, store at 4°C for up to one month. Avoid repeated freeze-thaw cycles.

Anti-WSTF Rabbit Monoclonal Antibody - Protein Information

Name BAZ1B**Synonyms** WBSC10, WBSCR10, WBSCR9, WSTF**Function**

Atypical tyrosine-protein kinase that plays a central role in chromatin remodeling and acts as a transcription regulator (PubMed:19092802). Involved in DNA damage response by phosphorylating 'Tyr-142' of histone H2AX (H2AXY142ph) (PubMed:19092802, PubMed:19234442). H2AXY142ph plays a central role in DNA repair and acts as a mark that distinguishes between apoptotic and repair responses to genotoxic stress (PubMed:19092802, PubMed:19234442). Regulatory subunit of the ATP-dependent WICH-1 and WICH-5 ISWI chromatin remodeling complexes, which form ordered nucleosome arrays on chromatin and facilitate access to DNA during DNA-templated processes such as DNA replication, transcription, and repair (PubMed:11980720, PubMed:28801535). Both complexes regulate the spacing of nucleosomes along the chromatin and have the ability to slide mononucleosomes to the center of a DNA template (PubMed:28801535). The WICH-1 ISWI chromatin remodeling complex has a lower ATP hydrolysis rate than the WICH-5 ISWI chromatin remodeling complex (PubMed:28801535). The WICH-5 ISWI chromatin-remodeling complex regulates the transcription of various genes, has a role in RNA polymerase I transcription (By similarity). Within the B-WICH complex has a role in RNA polymerase III transcription (PubMed:16603771). Mediates the recruitment of the WICH-5 ISWI chromatin remodeling complex to replication foci during DNA replication (PubMed:15543136).

Cellular Location

Nucleus {ECO:0000255|PROSITE-ProRule:PRU00063, ECO:0000255|PROSITE-ProRule:PRU00475, ECO:0000269|PubMed:11980720, ECO:0000269|PubMed:15543136, ECO:0000269|PubMed:16603771, ECO:0000269|PubMed:25593309}. Note=Accumulates in pericentromeric heterochromatin during replication (PubMed:15543136). Co-localizes with PCNA at replication foci during S phase (PubMed:15543136). Co-localizes with SMARCA5/SNF2H at replication foci during late-S phase (PubMed:15543136). Also localizes to replication foci independently of SMARCA5/SNF2H and PCNA (PubMed:15543136). Localizes to sites of DNA damage (PubMed:25593309).

Tissue Location

Ubiquitously expressed with high levels of expression in heart, brain, placenta, skeletal muscle and ovary

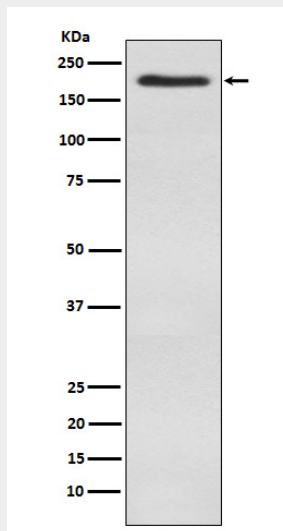
Anti-WSTF Rabbit Monoclonal Antibody - Protocols

Provided below are standard protocols that you may find useful for product applications.

- [Western Blot](#)
- [Blocking Peptides](#)
- [Dot Blot](#)
- [Immunohistochemistry](#)
- [Immunofluorescence](#)

- [Immunoprecipitation](#)
- [Flow Cytometry](#)
- [Cell Culture](#)

Anti-WSTF Rabbit Monoclonal Antibody - Images



Western blot analysis of WSTF expression in SH-SY5Y cell lysate.