

Anti-p53 DINP1 Rabbit Monoclonal Antibody
Catalog # ABO15352**Specification**

Anti-p53 DINP1 Rabbit Monoclonal Antibody - Product Information

Application	WB, IHC, IF, ICC
Primary Accession	Q96A56
Host	Rabbit
Isotype	IgG
Reactivity	Rat, Human, Mouse
Clonality	Monoclonal
Format	Liquid

Description

Anti-p53 DINP1 Rabbit Monoclonal Antibody . Tested in WB, IHC, ICC/IF applications. This antibody reacts with Human, Mouse, Rat.

Anti-p53 DINP1 Rabbit Monoclonal Antibody - Additional Information

Gene ID 94241

Other Names

Tumor protein p53-inducible nuclear protein 1, Stress-induced protein, p53-dependent damage-inducible nuclear protein 1, p53DINP1, TP53INP1, P53DINP1, SIP

Calculated MW

32 kDa KDa

Application Details

WB 1:500-1:2000
IHC 1:50-1:200
ICC/IF 1:50-1:200

Contents

Rabbit IgG in phosphate buffered saline, pH 7.4, 150mM NaCl, 0.02% sodium azide and 50% glycerol, 0.4-0.5mg/ml BSA.

Immunogen

A synthesized peptide derived from human p53 DINP1

Purification

Affinity-chromatography

Storage

Store at -20°C for one year. For short term storage and frequent use, store at 4°C for up to one month. Avoid repeated freeze-thaw cycles.

Anti-p53 DINP1 Rabbit Monoclonal Antibody - Protein Information

Name TP53INP1

Synonyms P53DINP1, SIP

Function

Antiproliferative and proapoptotic protein involved in cell stress response which acts as a dual regulator of transcription and autophagy. Acts as a positive regulator of autophagy. In response to cellular stress or activation of autophagy, relocates to autophagosomes where it interacts with autophagosome-associated proteins GABARAP, GABARAPL1/L2, MAP1LC3A/B/C and regulates autophagy. Acts as an antioxidant and plays a major role in p53/TP53-driven oxidative stress response. Possesses both a p53/TP53-independent intracellular reactive oxygen species (ROS) regulatory function and a p53/TP53-dependent transcription regulatory function. Positively regulates p53/TP53 and p73/TP73 and stimulates their capacity to induce apoptosis and regulate cell cycle. In response to double-strand DNA breaks, promotes p53/TP53 phosphorylation on 'Ser-46' and subsequent apoptosis. Acts as a tumor suppressor by inducing cell death by an autophagy and caspase-dependent mechanism. Can reduce cell migration by regulating the expression of SPARC.

Cellular Location

Cytoplasm, cytosol. Nucleus. Nucleus, PML body. Cytoplasmic vesicle, autophagosome.
Note=Shuttles between the nucleus and the cytoplasm, depending on cellular stress conditions, and re- localizes to autophagosomes on autophagy activation

Tissue Location

Ubiquitously expressed.

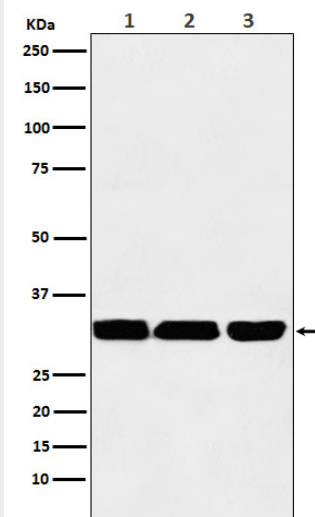
Anti-p53 DINP1 Rabbit Monoclonal Antibody - Protocols

Provided below are standard protocols that you may find useful for product applications.

- [Western Blot](#)
- [Blocking Peptides](#)
- [Dot Blot](#)
- [Immunohistochemistry](#)
- [Immunofluorescence](#)
- [Immunoprecipitation](#)
- [Flow Cytometry](#)
- [Cell Culture](#)

Anti-p53 DINP1 Rabbit Monoclonal Antibody - Images





Western blot analysis of p53 DINP1 expression in (1) HepG2 cell lysate; (2) RAW 264.7 cell lysate; (3) PC12 cell lysate.