

Anti-Rab25 Rabbit Monoclonal Antibody
Catalog # ABO15353**Specification**

Anti-Rab25 Rabbit Monoclonal Antibody - Product Information

| | |
|-------------------|------------------------|
| Application | WB |
| Primary Accession | P57735 |
| Host | Rabbit |
| Isotype | IgG |
| Reactivity | Human |
| Clonality | Monoclonal |
| Format | Liquid |

Description

Anti-Rab25 Rabbit Monoclonal Antibody . Tested in WB application. This antibody reacts with Human.

Anti-Rab25 Rabbit Monoclonal Antibody - Additional Information

Gene ID 57111

Other Names

Ras-related protein Rab-25, CATX-8, RAB25 (http://www.genenames.org/cgi-bin/gene_symbol_report?hgnc_id=18238), CATX8

Application Details

WB 1:500-1:1000

Contents

Rabbit IgG in phosphate buffered saline, pH 7.4, 150mM NaCl, 0.02% sodium azide and 50% glycerol, 0.4-0.5mg/ml BSA.

Immunogen

A synthesized peptide derived from human Rab25

Purification

Affinity-chromatography

Storage

Store at -20°C for one year. For short term storage and frequent use, store at 4°C for up to one month. Avoid repeated freeze-thaw cycles.

Anti-Rab25 Rabbit Monoclonal Antibody - Protein Information

Name RAB25 ([HGNC:18238](#))

Synonyms CATX8

Function

The small GTPases Rab are key regulators of intracellular membrane trafficking, from the formation of transport vesicles to their fusion with membranes. Rabs cycle between an inactive GDP-bound form and an active GTP-bound form that is able to recruit to membranes different set of downstream effectors directly responsible for vesicle formation, movement, tethering and fusion (By similarity). RAB25 regulates epithelial cell differentiation, proliferation and survival, thereby playing key roles in tumorigenesis (PubMed:17925226). Promotes invasive migration of cells in which it functions to localize and maintain integrin alpha-V/beta-1 at the tips of extending pseudopodia (PubMed:17925226). Involved in the regulation of epithelial morphogenesis through the control of CLDN4 expression and localization at tight junctions (By similarity). May selectively regulate the apical recycling pathway (By similarity). Together with MYO5B regulates transcytosis (By similarity).

Cellular Location

Cell membrane; Lipid-anchor; Cytoplasmic side. Cytoplasmic vesicle. Cell projection, pseudopodium membrane. Note=Colocalizes with integrin alpha- V/beta-1 in vesicles at the pseudopodial tips. Colocalizes with RAB11A in subapical vesicles (By similarity). {ECO:0000250|UniProtKB:P46629, ECO:0000269|PubMed:17925226}

Tissue Location

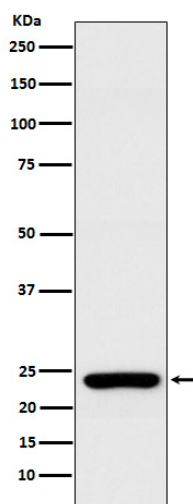
Expression is restricted to epithelial cells (PubMed:15502842). Expressed in ovarian epithelium (NOE) and breast tissue. Expressed in ovarian cancer; expression is increased relative to NOE cells. Expression in ovarian cancer is stage dependent, with stage III and stage IV showing higher levels than early stage cancers Expressed in breast cancer; expression is increased relative to normal breast tissue.

Anti-Rab25 Rabbit Monoclonal Antibody - Protocols

Provided below are standard protocols that you may find useful for product applications.

- [Western Blot](#)
- [Blocking Peptides](#)
- [Dot Blot](#)
- [Immunohistochemistry](#)
- [Immunofluorescence](#)
- [Immunoprecipitation](#)
- [Flow Cytometry](#)
- [Cell Culture](#)

Anti-Rab25 Rabbit Monoclonal Antibody - Images



Western blot analysis of Rab25 expression in MCF7 cell lysate.