

Anti-MIB1 / DIP1 Rabbit Monoclonal Antibody
Catalog # ABO15362**Specification****Anti-MIB1 / DIP1 Rabbit Monoclonal Antibody - Product Information**

Application	WB, IHC, IF, ICC
Primary Accession	Q86YT6
Host	Rabbit
Isotype	IgG
Reactivity	Human, Mouse
Clonality	Monoclonal
Format	Liquid

Description

Anti-MIB1 / DIP1 Rabbit Monoclonal Antibody . Tested in WB, IHC, ICC/IF applications. This antibody reacts with Human, Mouse.

Anti-MIB1 / DIP1 Rabbit Monoclonal Antibody - Additional Information

Gene ID 57534

Other Names

E3 ubiquitin-protein ligase MIB1, 2.3.2.27, DAPK-interacting protein 1, DIP-1, Mind bomb homolog 1, RING-type E3 ubiquitin transferase MIB1, Zinc finger ZZ type with ankyrin repeat domain protein 2, MIB1, DIP1, KIAA1323, ZZANK2

Calculated MW

110 kDa KDa

Application Details

WB 1:500-1:2000
IHC 1:50-1:200
ICC/IF 1:50-1:200

Contents

Rabbit IgG in phosphate buffered saline, pH 7.4, 150mM NaCl, 0.02% sodium azide and 50% glycerol, 0.4-0.5mg/ml BSA.

Immunogen

A synthesized peptide derived from human MIB1 / DIP1

Purification

Affinity-chromatography

Storage

Store at -20°C for one year. For short term storage and frequent use, store at 4°C for up to one month. Avoid repeated freeze-thaw cycles.

Anti-MIB1 / DIP1 Rabbit Monoclonal Antibody - Protein Information

Name MIB1

Synonyms DIP1, KIAA1323, ZZANK2

Function

E3 ubiquitin-protein ligase that mediates ubiquitination of Delta receptors, which act as ligands of Notch proteins. Positively regulates the Delta-mediated Notch signaling by ubiquitinating the intracellular domain of Delta, leading to endocytosis of Delta receptors. Probably mediates ubiquitination and subsequent proteasomal degradation of DAPK1, thereby antagonizing anti-apoptotic effects of DAPK1 to promote TNF-induced apoptosis (By similarity). Involved in ubiquitination of centriolar satellite CEP131, CEP290 and PCM1 proteins and hence inhibits primary cilium formation in proliferating cells. Mediates 'Lys-63'-linked polyubiquitination of TBK1, which probably participates in kinase activation.

Cellular Location

Cytoplasm. Cytoplasm, cytoskeleton, microtubule organizing center, centrosome, centriolar satellite. Cell membrane. Note=Localizes to the plasma membrane (By similarity) According to PubMed:15048887, it is mitochondrial, however such localization remains unclear. Displaced from centriolar satellites in response to cellular stress, such as ultraviolet light (UV) radiation or heat shock.

Tissue Location

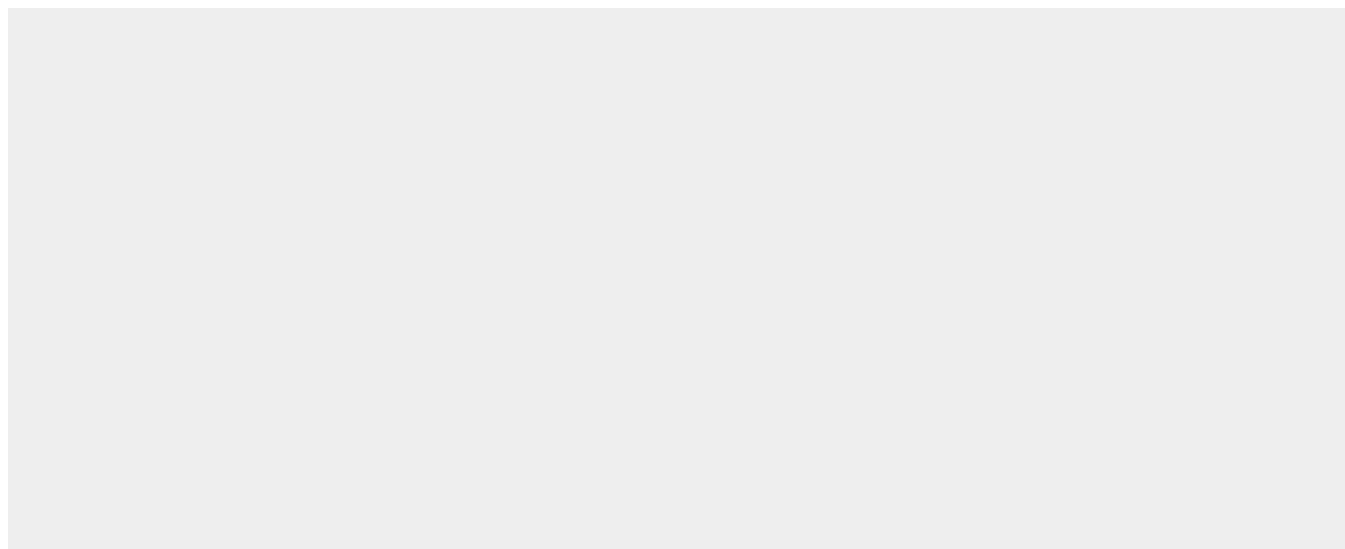
Widely expressed at low level. Expressed at higher level in spinal cord, ovary, whole brain, and all specific brain regions examined.

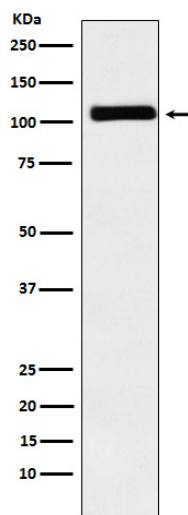
Anti-MIB1 / DIP1 Rabbit Monoclonal Antibody - Protocols

Provided below are standard protocols that you may find useful for product applications.

- [Western Blot](#)
- [Blocking Peptides](#)
- [Dot Blot](#)
- [Immunohistochemistry](#)
- [Immunofluorescence](#)
- [Immunoprecipitation](#)
- [Flow Cytometry](#)
- [Cell Culture](#)

Anti-MIB1 / DIP1 Rabbit Monoclonal Antibody - Images





Western blot analysis of MIB1 / DIP1 expression in Caco2 cell lysate.