

Anti-Fibrinogen gamma chain Rabbit Monoclonal Antibody
Catalog # ABO15366

Specification

Anti-Fibrinogen gamma chain Rabbit Monoclonal Antibody - Product Information

Application	WB, FC
Primary Accession	P02679
Host	Rabbit
Isotype	IgG
Reactivity	Human
Clonality	Monoclonal
Format	Liquid

Description

Anti-Fibrinogen gamma chain Rabbit Monoclonal Antibody . Tested in WB, Flow Cytometry applications. This antibody reacts with Human.

Anti-Fibrinogen gamma chain Rabbit Monoclonal Antibody - Additional Information

Gene ID 2266

Other Names

Fibrinogen gamma chain, FGG

Calculated MW

52 kDa KDa

Application Details

WB 1:500-1:2000
FC 1:50

Contents

Rabbit IgG in phosphate buffered saline, pH 7.4, 150mM NaCl, 0.02% sodium azide and 50% glycerol, 0.4-0.5mg/ml BSA.

Immunogen

A synthesized peptide derived from human Fibrinogen gamma chain

Purification

Affinity-chromatography

Storage

Store at -20°C for one year. For short term storage and frequent use, store at 4°C for up to one month. Avoid repeated freeze-thaw cycles.

Anti-Fibrinogen gamma chain Rabbit Monoclonal Antibody - Protein Information

Name FGG

Function

Together with fibrinogen alpha (FGA) and fibrinogen beta (FGB), polymerizes to form an insoluble fibrin matrix. Has a major function in hemostasis as one of the primary components of blood clots. In addition, functions during the early stages of wound repair to stabilize the lesion and guide cell migration during re-epithelialization. Was originally thought to be essential for platelet aggregation, based on in vitro studies using anticoagulated blood. However, subsequent studies have shown that it is not absolutely required for thrombus formation in vivo. Enhances expression of SELP in activated platelets via an ITGB3-dependent pathway. Maternal fibrinogen is essential for successful pregnancy. Fibrin deposition is also associated with infection, where it protects against IFNG-mediated hemorrhage. May also facilitate the antibacterial immune response via both innate and T-cell mediated pathways.

Cellular Location

Secreted

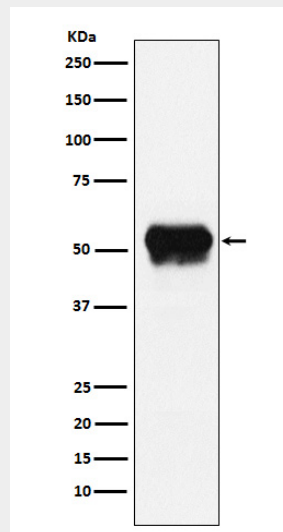
Tissue Location

Detected in blood plasma (at protein level).

Anti-Fibrinogen gamma chain Rabbit Monoclonal Antibody - Protocols

Provided below are standard protocols that you may find useful for product applications.

- [Western Blot](#)
- [Blocking Peptides](#)
- [Dot Blot](#)
- [Immunohistochemistry](#)
- [Immunofluorescence](#)
- [Immunoprecipitation](#)
- [Flow Cytometry](#)
- [Cell Culture](#)

Anti-Fibrinogen gamma chain Rabbit Monoclonal Antibody - Images

Western blot analysis of Fibrinogen gamma chain expression in Human plasma lysate.