

Anti-P2Y6 Rabbit Monoclonal Antibody Catalog # ABO15380

Specification

Anti-P2Y6 Rabbit Monoclonal Antibody - Product Information

Application	WB, IHC, IF, ICC, IP
Primary Accession	Q15077
Host	Rabbit
Isotype	IgG
Reactivity	Human
Clonality	Monoclonal
Format	Liquid

Description

Anti-P2Y6 Rabbit Monoclonal Antibody . Tested in WB, IHC, ICC/IF, IP applications. This antibody reacts with Human.

Anti-P2Y6 Rabbit Monoclonal Antibody - Additional Information

Gene ID 5031

Other Names

P2Y purinoceptor 6, P2Y6, P2RY6

Calculated MW

42 kDa KDa

Application Details

WB 1:1000-1:5000
IHC 1:50-1:200
ICC/IF 1:50-1:200
IP 1:50

Contents

Rabbit IgG in phosphate buffered saline, pH 7.4, 150mM NaCl, 0.02% sodium azide and 50% glycerol, 0.4-0.5mg/ml BSA.

Immunogen

A synthesized peptide derived from human P2Y6

Purification

Affinity-chromatography

Storage

Store at -20°C for one year. For short term storage and frequent use, store at 4°C for up to one month. Avoid repeated freeze-thaw cycles.

Anti-P2Y6 Rabbit Monoclonal Antibody - Protein Information

Name P2RY6

Function

Receptor for extracellular UDP > UTP > ATP. The activity of this receptor is mediated by G proteins which activate a phosphatidylinositol-calcium second messenger system.

Cellular Location

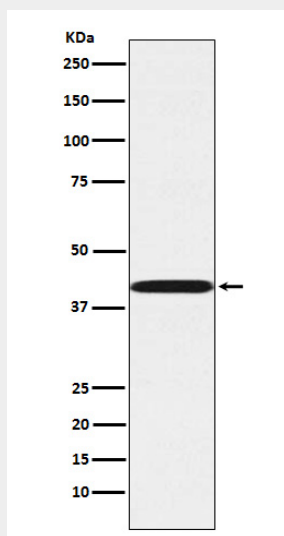
Cell membrane; Multi-pass membrane protein.

Anti-P2Y6 Rabbit Monoclonal Antibody - Protocols

Provided below are standard protocols that you may find useful for product applications.

- [Western Blot](#)
- [Blocking Peptides](#)
- [Dot Blot](#)
- [Immunohistochemistry](#)
- [Immunofluorescence](#)
- [Immunoprecipitation](#)
- [Flow Cytometry](#)
- [Cell Culture](#)

Anti-P2Y6 Rabbit Monoclonal Antibody - Images



Western blot analysis of P2Y6 expression in A549 cell lysate.