

Anti-Alcohol Dehydrogenase Rabbit Monoclonal Antibody
Catalog # ABO15396**Specification**

Anti-Alcohol Dehydrogenase Rabbit Monoclonal Antibody - Product Information

Application	WB, IHC, IF, ICC
Primary Accession	P07327
Host	Rabbit
Isotype	IgG
Reactivity	Rat, Human, Mouse
Clonality	Monoclonal
Format	Liquid

Description

Anti-Alcohol Dehydrogenase Rabbit Monoclonal Antibody . Tested in WB, IHC, ICC/IF applications.
This antibody reacts with Human, Mouse, Rat.

Anti-Alcohol Dehydrogenase Rabbit Monoclonal Antibody - Additional Information

Gene ID 124

Other Names

Alcohol dehydrogenase 1A, 1.1.1.1, Alcohol dehydrogenase subunit alpha, ADH1A, ADH1

Calculated MW

40 kDa KDa

Application Details

WB 1:500-1:2000
IHC 1:50-1:200
ICC/IF 1:100-1:500

Contents

Rabbit IgG in phosphate buffered saline, pH 7.4, 150mM NaCl, 0.02% sodium azide and 50% glycerol, 0.4-0.5mg/ml BSA.

Immunogen

A synthesized peptide derived from human Alcohol Dehydrogenase

Purification

Affinity-chromatography

Storage

Store at -20°C for one year. For short term storage and frequent use, store at 4°C for up to one month. Avoid repeated freeze-thaw cycles.

Anti-Alcohol Dehydrogenase Rabbit Monoclonal Antibody - Protein Information

Name ADH1A

Synonyms ADH1

Function

Alcohol dehydrogenase (PubMed:2738060). Oxidizes primary as well as secondary alcohols. Ethanol is a very poor substrate (PubMed:2738060).

Cellular Location

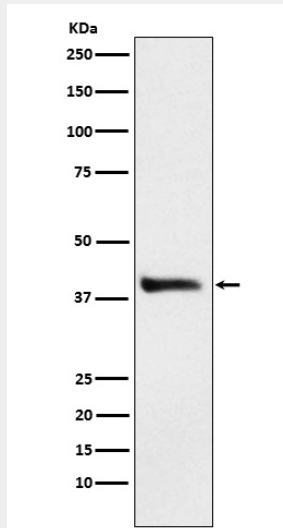
Cytoplasm.

Anti-Alcohol Dehydrogenase Rabbit Monoclonal Antibody - Protocols

Provided below are standard protocols that you may find useful for product applications.

- [Western Blot](#)
- [Blocking Peptides](#)
- [Dot Blot](#)
- [Immunohistochemistry](#)
- [Immunofluorescence](#)
- [Immunoprecipitation](#)
- [Flow Cytometry](#)
- [Cell Culture](#)

Anti-Alcohol Dehydrogenase Rabbit Monoclonal Antibody - Images



Western blot analysis of Alcohol Dehydrogenase expression in HepG2 cell lysate.