

**Anti-Tropomyosin 1 Rabbit Monoclonal Antibody**  
**Catalog # ABO15410****Specification**

---

**Anti-Tropomyosin 1 Rabbit Monoclonal Antibody - Product Information**

Application	WB, IHC, IF, ICC, IP, FC
Primary Accession	<a href="#">P09493</a>
Host	Rabbit
Isotype	IgG
Reactivity	Rat, Human, Mouse
Clonality	Monoclonal
Format	Liquid

**Description**

Anti-Tropomyosin 1 Rabbit Monoclonal Antibody . Tested in WB, IHC, ICC/IF, IP, Flow Cytometry applications. This antibody reacts with Human, Mouse, Rat.

**Anti-Tropomyosin 1 Rabbit Monoclonal Antibody - Additional Information**

**Gene ID** 7168

**Other Names**

Tropomyosin alpha-1 chain, Alpha-tropomyosin, Tropomyosin-1, TPM1, C15orf13, TMSA

**Calculated MW**

35-45 kDa KDa

**Application Details**

WB 1:500-1:2000<br>IHC 1:50-1:200<br>ICC/IF 1:50-1:200<br>IP 1:50<br>FC 1:50

**Contents**

Rabbit IgG in phosphate buffered saline, pH 7.4, 150mM NaCl, 0.02% sodium azide and 50% glycerol, 0.4-0.5mg/ml BSA.

**Immunogen**

A synthesized peptide derived from human Tropomyosin 1

**Purification**

Affinity-chromatography

**Storage**

**Store at -20°C for one year. For short term storage and frequent use, store at 4°C for up to one month. Avoid repeated freeze-thaw cycles.**

**Anti-Tropomyosin 1 Rabbit Monoclonal Antibody - Protein Information**

**Name** TPM1

**Synonyms** C15orf13, TMSA

### Function

Binds to actin filaments in muscle and non-muscle cells (PubMed:<a href="http://www.uniprot.org/citations/23170982" target="\_blank">23170982</a>). Plays a central role, in association with the troponin complex, in the calcium dependent regulation of vertebrate striated muscle contraction (PubMed:<a href="http://www.uniprot.org/citations/23170982" target="\_blank">23170982</a>). Smooth muscle contraction is regulated by interaction with caldesmon. In non-muscle cells is implicated in stabilizing cytoskeleton actin filaments.

### Cellular Location

Cytoplasm, cytoskeleton {ECO:0000250|UniProtKB:P04692}. Note=Associates with F-actin stress fibers. {ECO:0000250|UniProtKB:P04692}

### Tissue Location

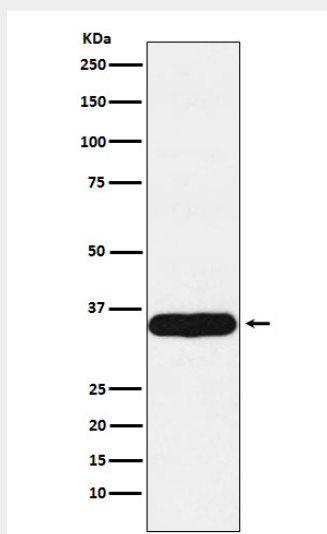
Detected in primary breast cancer tissues but undetectable in normal breast tissues in Sudanese patients. Isoform 1 is expressed in adult and fetal skeletal muscle and cardiac tissues, with higher expression levels in the cardiac tissues. Isoform 10 is expressed in adult and fetal cardiac tissues, but not in skeletal muscle. {ECO:0000269|PubMed:15249230, ECO:0000269|Ref.15}

## Anti-Tropomyosin 1 Rabbit Monoclonal Antibody - Protocols

Provided below are standard protocols that you may find useful for product applications.

- [Western Blot](#)
- [Blocking Peptides](#)
- [Dot Blot](#)
- [Immunohistochemistry](#)
- [Immunofluorescence](#)
- [Immunoprecipitation](#)
- [Flow Cytometry](#)
- [Cell Culture](#)

## Anti-Tropomyosin 1 Rabbit Monoclonal Antibody - Images



Western blot analysis of Tropomyosin 1 expression in Human heart lysate.