

Anti-IL23 Rabbit Monoclonal Antibody
Catalog # ABO15422**Specification**

Anti-IL23 Rabbit Monoclonal Antibody - Product Information

Application	WB
Primary Accession	Q9NPF7
Host	Rabbit
Isotype	IgG
Reactivity	Human
Clonality	Monoclonal
Format	Liquid

Description

Anti-IL23 Rabbit Monoclonal Antibody . Tested in WB application. This antibody reacts with Human.

Anti-IL23 Rabbit Monoclonal Antibody - Additional Information

Gene ID 51561

Other Names

Interleukin-23 subunit alpha, IL-23 subunit alpha, IL-23-A, Interleukin-23 subunit p19, IL-23p19, IL23A, SGRF

Application Details

WB 1:500-1:1000

Contents

Rabbit IgG in phosphate buffered saline, pH 7.4, 150mM NaCl, 0.02% sodium azide and 50% glycerol, 0.4-0.5mg/ml BSA.

Immunogen

A synthesized peptide derived from human IL23

Purification

Affinity-chromatography

Storage

Store at -20°C for one year. For short term storage and frequent use, store at 4°C for up to one month. Avoid repeated freeze-thaw cycles.

Anti-IL23 Rabbit Monoclonal Antibody - Protein Information

Name IL23A

Synonyms SGRF

Function

Associates with IL12B to form the pro-inflammatory cytokine IL-23 that plays different roles in innate and adaptive immunity (PubMed:11114383). Released by antigen-presenting cells such as dendritic cells or macrophages, binds to a heterodimeric receptor complex composed of IL12RB1 and IL23R to activate JAK2 and TYK2 which then phosphorylate the receptor to form a docking site leading to the phosphorylation of STAT3 and STAT4 (PubMed:29287995, PubMed:32474165, PubMed:33606986). This process leads to activation of several pathways including p38 MAPK or NF-kappa-B and promotes the production of pro-inflammatory cytokines such as interleukin-17A/IL17A (PubMed:12023369). In turn, participates in the early and effective intracellular bacterial clearance (PubMed:32474165). Promotes the expansion and survival of T-helper 17 cells, a CD4-positive helper T-cell subset that produces IL-17, as well as other IL-17-producing cells (PubMed:17676044).

Cellular Location

Secreted. Note=Secreted upon association with IL12B

Tissue Location

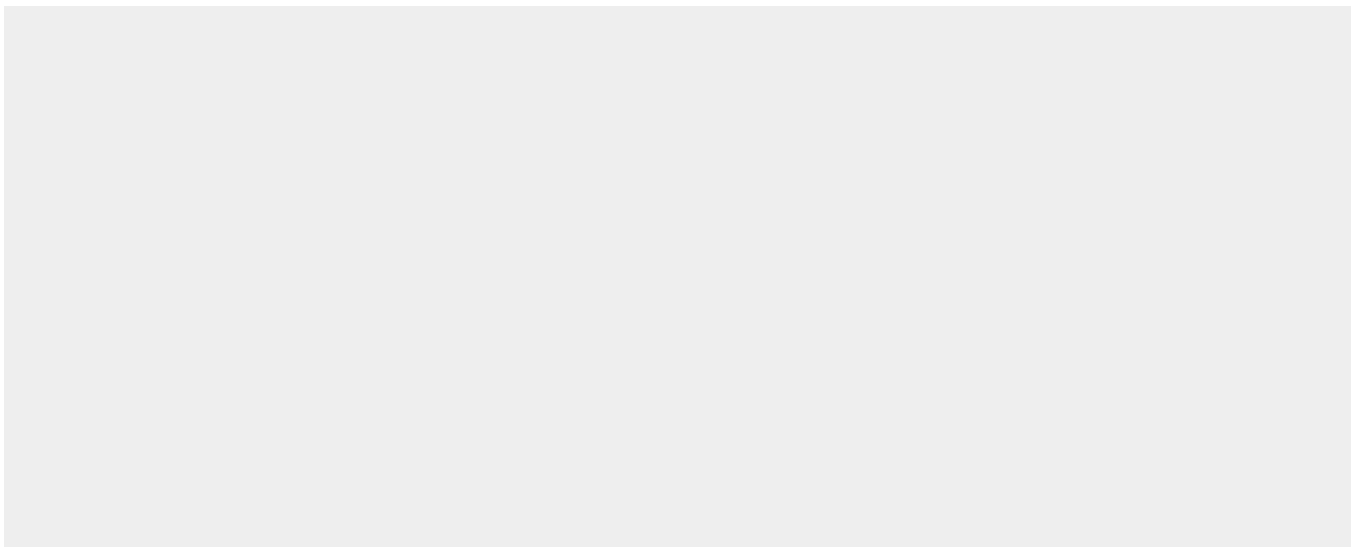
Secreted by activated dendritic and phagocytic cells and keratinocytes. Also expressed by dermal Langerhans cells (at protein level).

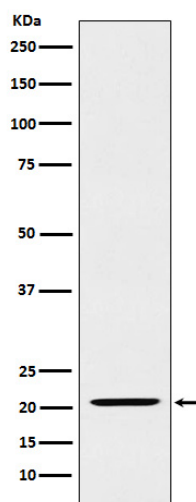
Anti-IL23 Rabbit Monoclonal Antibody - Protocols

Provided below are standard protocols that you may find useful for product applications.

- [Western Blot](#)
- [Blocking Peptides](#)
- [Dot Blot](#)
- [Immunohistochemistry](#)
- [Immunofluorescence](#)
- [Immunoprecipitation](#)
- [Flow Cytometry](#)
- [Cell Culture](#)

Anti-IL23 Rabbit Monoclonal Antibody - Images





Western blot analysis of IL23 expression in Raji cell lysate.