

Anti-p60 CAF1 Rabbit Monoclonal Antibody
Catalog # ABO15424**Specification****Anti-p60 CAF1 Rabbit Monoclonal Antibody - Product Information**

Application	WB, IHC, IF, ICC, IP, FC
Primary Accession	Q13112
Host	Rabbit
Isotype	IgG
Reactivity	Human
Clonality	Monoclonal
Format	Liquid

Description

Anti-p60 CAF1 Rabbit Monoclonal Antibody . Tested in WB, IHC, ICC/IF, IP, Flow Cytometry applications. This antibody reacts with Human.

Anti-p60 CAF1 Rabbit Monoclonal Antibody - Additional Information

Gene ID 8208

Other Names

Chromatin assembly factor 1 subunit B, CAF-1 subunit B, Chromatin assembly factor I p60 subunit, CAF-I 60 kDa subunit, CAF-I p60, M-phase phosphoprotein 7, CHAF1B ([HGNC:1911](http://www.genenames.org/cgi-bin/gene_symbol_report?hgnc_id=1911))

Calculated MW

70 kDa KDa

Application Details

WB 1:1000-1:5000
IHC 1:50-1:200
ICC/IF 1:50-1:200
IP 1:50
FC 1:100

Contents

Rabbit IgG in phosphate buffered saline, pH 7.4, 150mM NaCl, 0.02% sodium azide and 50% glycerol, 0.4-0.5mg/ml BSA.

Immunogen

A synthesized peptide derived from human p60 CAF1

Purification

Affinity-chromatography

Storage

Store at -20°C for one year. For short term storage and frequent use, store at 4°C for up to one month. Avoid repeated freeze-thaw cycles.

Anti-p60 CAF1 Rabbit Monoclonal Antibody - Protein Information

Name CHAF1B ([HGNC:1911](#))

Function

Acts as a component of the histone chaperone complex chromatin assembly factor 1 (CAF-1), which assembles histone octamers onto DNA during replication and repair. CAF-1 performs the first step of the nucleosome assembly process, bringing newly synthesized histones H3 and H4 to replicating DNA; histones H2A/H2B can bind to this chromatin precursor subsequent to DNA replication to complete the histone octamer.

Cellular Location

Nucleus. Cytoplasm. Note=DNA replication foci. Cytoplasmic in M phase

Anti-p60 CAF1 Rabbit Monoclonal Antibody - Protocols

Provided below are standard protocols that you may find useful for product applications.

- [Western Blot](#)
- [Blocking Peptides](#)
- [Dot Blot](#)
- [Immunohistochemistry](#)
- [Immunofluorescence](#)
- [Immunoprecipitation](#)
- [Flow Cytometry](#)
- [Cell Culture](#)

Anti-p60 CAF1 Rabbit Monoclonal Antibody - Images

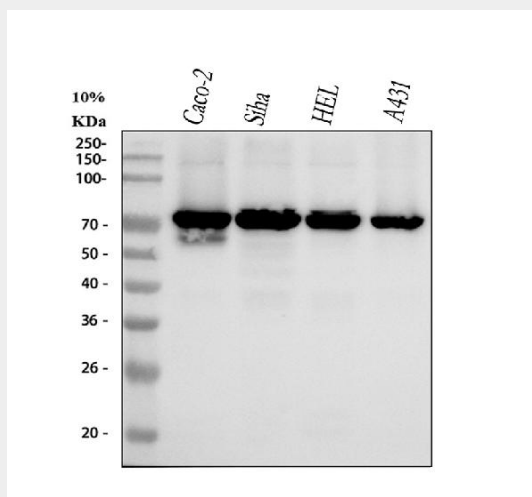


Figure 1. Western blot analysis of p60 CAF1 using anti-p60 CAF1 antibody (M03959-1).

Electrophoresis was performed on a 5-20% SDS-PAGE gel at 70V (Stacking gel) / 90V (Resolving gel) for 2-3 hours. The sample well of each lane was loaded with 30 ug of sample under reducing conditions.

Lane 1: human CACO-2 whole cell lysates,

Lane 2: human SiHa whole cell lysates,

Lane 3: human HEL whole cell lysates,

Lane 4: human A431 whole cell lysates.

After electrophoresis, proteins were transferred to a nitrocellulose membrane at 150 mA for 50-90 minutes. Blocked the membrane with 5% non-fat milk/TBS for 1.5 hour at RT. The membrane was incubated with rabbit anti-p60 CAF1 antigen affinity purified monoclonal antibody (Catalog #

M03959-1) at 1:1000 overnight at 4°C, then washed with TBS-0.1%Tween 3 times with 5 minutes each and probed with a goat anti-rabbit IgG-HRP secondary antibody at a dilution of 1:5000 for 1.5 hour at RT. The signal is developed using an Enhanced Chemiluminescent detection (ECL) kit (Catalog # EK1002) with Tanon 5200 system. A specific band was detected for p60 CAF1 at approximately 70 kDa. The expected band size for p60 CAF1 is at 61 kDa.