

Anti-FKBP52 Rabbit Monoclonal Antibody
Catalog # ABO15437**Specification****Anti-FKBP52 Rabbit Monoclonal Antibody - Product Information**

Application	WB, IHC, IF, ICC, FC
Primary Accession	Q02790
Host	Rabbit
Isotype	IgG
Reactivity	Rat, Human, Mouse
Clonality	Monoclonal
Format	Liquid

Description

Anti-FKBP52 Rabbit Monoclonal Antibody . Tested in WB, IHC, ICC/IF, Flow Cytometry applications. This antibody reacts with Human, Mouse, Rat.

Anti-FKBP52 Rabbit Monoclonal Antibody - Additional Information

Gene ID 2288

Other Names

Peptidyl-prolyl cis-trans isomerase FKBP4, PPIase FKBP4, 5.2.1.8, 51 kDa FK506-binding protein, FKBP51, 52 kDa FK506-binding protein, 52 kDa FKBP, FKBP-52, 59 kDa immunophilin, p59, FK506-binding protein 4, FKBP-4, FKBP59, HSP-binding immunophilin, HBI, Immunophilin FKBP52, Rotamase, Peptidyl-prolyl cis-trans isomerase FKBP4, N-terminally processed, FKBP4, FKBP52

Calculated MW

52 kDa KDa

Application Details

WB 1:500-1:2000
IHC 1:50-1:200
ICC/IF 1:50-1:200
FC 1:50

Contents

Rabbit IgG in phosphate buffered saline, pH 7.4, 150mM NaCl, 0.02% sodium azide and 50% glycerol, 0.4-0.5mg/ml BSA.

Immunogen

A synthesized peptide derived from human FKBP52

Purification

Affinity-chromatography

Storage

Store at -20°C for one year. For short term storage and frequent use, store at 4°C for up to one month. Avoid repeated freeze-thaw cycles.

Anti-FKBP52 Rabbit Monoclonal Antibody - Protein Information

Name FKBP4

Synonyms FKBP52

Function

Immunophilin protein with PPlase and co-chaperone activities. Component of steroid receptors heterocomplexes through interaction with heat-shock protein 90 (HSP90). May play a role in the intracellular trafficking of heterooligomeric forms of steroid hormone receptors between cytoplasm and nuclear compartments. The isomerase activity controls neuronal growth cones via regulation of TRPC1 channel opening. Also acts as a regulator of microtubule dynamics by inhibiting MAPT/TAU ability to promote microtubule assembly. May have a protective role against oxidative stress in mitochondria.

Cellular Location

Cytoplasm, cytosol. Mitochondrion. Nucleus {ECO:0000250|UniProtKB:P30416}. Cytoplasm, cytoskeleton {ECO:0000250|UniProtKB:Q9QVC8}. Cell projection, axon {ECO:0000250|UniProtKB:Q9QVC8}. Note=Shuttles from mitochondria to nucleus; co-localizes in mitochondria with the glucocorticoid receptor (PubMed:21730050). Colocalized with MAPT/TAU in the distal part of the primary cortical neurons (By similarity) {ECO:0000250|UniProtKB:Q9QVC8, ECO:0000269|PubMed:21730050}

Tissue Location

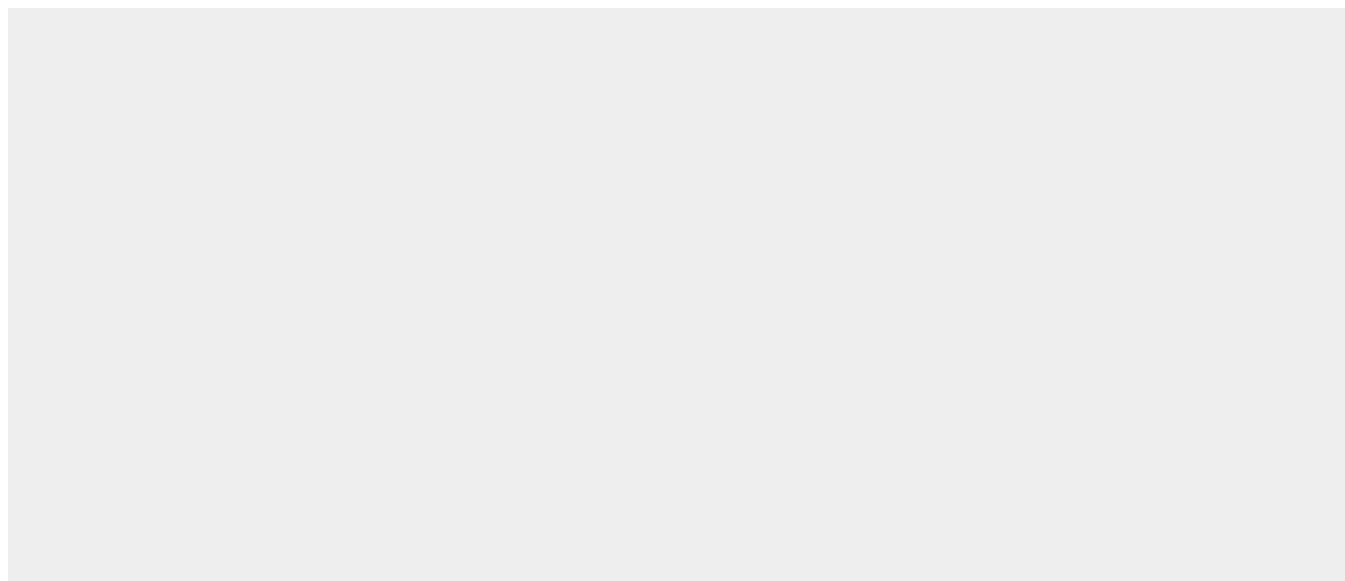
Widely expressed..

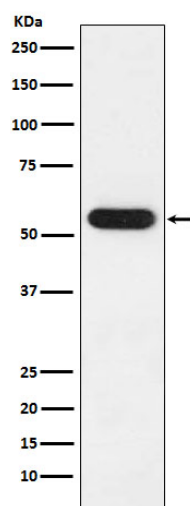
Anti-FKBP52 Rabbit Monoclonal Antibody - Protocols

Provided below are standard protocols that you may find useful for product applications.

- [Western Blot](#)
- [Blocking Peptides](#)
- [Dot Blot](#)
- [Immunohistochemistry](#)
- [Immunofluorescence](#)
- [Immunoprecipitation](#)
- [Flow Cytometry](#)
- [Cell Culture](#)

Anti-FKBP52 Rabbit Monoclonal Antibody - Images





Western blot analysis of FKBP52 expression in MCF7 cell lysate.