

Anti-CtBP1 Rabbit Monoclonal Antibody
Catalog # ABO15440**Specification**

Anti-CtBP1 Rabbit Monoclonal Antibody - Product Information

Application	WB, IHC, IF, ICC, IP
Primary Accession	Q13363
Host	Rabbit
Isotype	IgG
Reactivity	Rat, Human, Mouse
Clonality	Monoclonal
Format	Liquid

Description

Anti-CtBP1 Rabbit Monoclonal Antibody . Tested in WB, IHC, ICC/IF, IP applications. This antibody reacts with Human, Mouse, Rat.

Anti-CtBP1 Rabbit Monoclonal Antibody - Additional Information

Gene ID 1487

Other Names

C-terminal-binding protein 1, CtBP1, 1.1.1.-, CTBP1, CTBP

Calculated MW

48 kDa KDa

Application Details

WB 1:500-1:2000
IHC 1:50-1:200
ICC/IF 1:50-1:200
IP 1:50

Contents

Rabbit IgG in phosphate buffered saline, pH 7.4, 150mM NaCl, 0.02% sodium azide and 50% glycerol, 0.4-0.5mg/ml BSA.

Immunogen

A synthesized peptide derived from human CtBP1

Purification

Affinity-chromatography

Storage

Store at -20°C for one year. For short term storage and frequent use, store at 4°C for up to one month. Avoid repeated freeze-thaw cycles.

Anti-CtBP1 Rabbit Monoclonal Antibody - Protein Information

Name CTBP1

Synonyms CTBP**Function**

Corepressor targeting diverse transcription regulators such as GLIS2 or BCL6. Has dehydrogenase activity. Involved in controlling the equilibrium between tubular and stacked structures in the Golgi complex. Functions in brown adipose tissue (BAT) differentiation.

Cellular Location

Cytoplasm. Nucleus

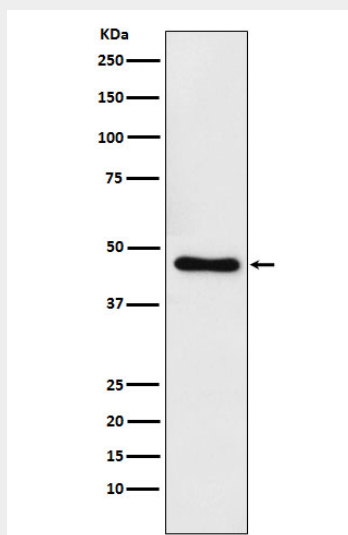
Tissue Location

Expressed in germinal center B-cells.

Anti-CtBP1 Rabbit Monoclonal Antibody - Protocols

Provided below are standard protocols that you may find useful for product applications.

- [Western Blot](#)
- [Blocking Peptides](#)
- [Dot Blot](#)
- [Immunohistochemistry](#)
- [Immunofluorescence](#)
- [Immunoprecipitation](#)
- [Flow Cytometry](#)
- [Cell Culture](#)

Anti-CtBP1 Rabbit Monoclonal Antibody - Images

Western blot analysis of CtBP1 expression in Raji cell lysate.