

Anti-beta Defensin 1 Rabbit Monoclonal Antibody
Catalog # ABO15443**Specification**

Anti-beta Defensin 1 Rabbit Monoclonal Antibody - Product Information

Application	WB
Primary Accession	P60022
Host	Rabbit
Isotype	IgG
Reactivity	Human
Clonality	Monoclonal
Format	Liquid

Description

Anti-beta Defensin 1 Rabbit Monoclonal Antibody . Tested in WB application. This antibody reacts with Human.

Anti-beta Defensin 1 Rabbit Monoclonal Antibody - Additional Information

Gene ID 1672

Other Names

Beta-defensin 1, BD-1, hBD-1, Defensin, beta 1, DEFB1, BD1, HBD1

Application Details

WB 1:500-1:2000

Contents

Rabbit IgG in phosphate buffered saline, pH 7.4, 150mM NaCl, 0.02% sodium azide and 50% glycerol, 0.4-0.5mg/ml BSA.

Immunogen

A synthesized peptide derived from human beta Defensin 1

Purification

Affinity-chromatography

Storage

Store at -20°C for one year. For short term storage and frequent use, store at 4°C for up to one month. Avoid repeated freeze-thaw cycles.

Anti-beta Defensin 1 Rabbit Monoclonal Antibody - Protein Information

Name DEFB1

Synonyms BD1, HBD1

Function

Has bactericidal activity. May act as a ligand for C-C chemokine receptor CCR6. Positively regulates the sperm motility and bactericidal activity in a CCR6-dependent manner. Binds to CCR6 and triggers Ca²⁺ mobilization in the sperm which is important for its motility (PubMed:25122636).

Cellular Location

Secreted. Membrane. Note=Associates with tumor cell membrane-derived microvesicles (PubMed:23938203)

Tissue Location

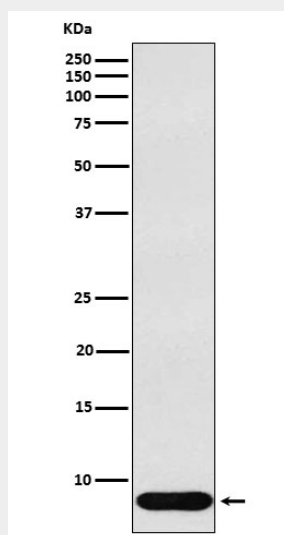
Blood plasma. Sperm. Highly expressed in the lower head and midpiece of sperm. Significantly reduced levels found in the sperms of asthenozoospermia and leukocytospermia patients (at protein level).

Anti-beta Defensin 1 Rabbit Monoclonal Antibody - Protocols

Provided below are standard protocols that you may find useful for product applications.

- [Western Blot](#)
- [Blocking Peptides](#)
- [Dot Blot](#)
- [Immunohistochemistry](#)
- [Immunofluorescence](#)
- [Immunoprecipitation](#)
- [Flow Cytometry](#)
- [Cell Culture](#)

Anti-beta Defensin 1 Rabbit Monoclonal Antibody - Images



Western blot analysis of beta Defensin 1 expression in Human recombinant beta Defensin 1 lysate.