

Anti-BANF1 Rabbit Monoclonal Antibody
Catalog # ABO15459**Specification**

Anti-BANF1 Rabbit Monoclonal Antibody - Product Information

Application	WB, IHC, IF, ICC, FC
Primary Accession	O75531
Host	Rabbit
Isotype	IgG
Reactivity	Rat, Human, Mouse
Clonality	Monoclonal
Format	Liquid

Description

Anti-BANF1 Rabbit Monoclonal Antibody . Tested in WB, IHC, ICC/IF, Flow Cytometry applications.
This antibody reacts with Human, Mouse, Rat.

Anti-BANF1 Rabbit Monoclonal Antibody - Additional Information

Gene ID 8815

Other Names

Barrier-to-autointegration factor, Breakpoint cluster region protein 1, Barrier-to-autointegration factor, N-terminally processed, BANF1 {ECO:0000303|PubMed:21549337, ECO:0000312|HGNC:HGNC:17397}

Calculated MW

10 kDa KDa

Application Details

WB 1:500-1:2000
IHC 1:50-1:200
ICC/IF 1:50-1:200
FC 1:100

Contents

Rabbit IgG in phosphate buffered saline, pH 7.4, 150mM NaCl, 0.02% sodium azide and 50% glycerol, 0.4-0.5mg/ml BSA.

Immunogen

A synthesized peptide derived from human BANF1

Purification

Affinity-chromatography

Storage

Store at -20°C for one year. For short term storage and frequent use, store at 4°C for up to one month. Avoid repeated freeze-thaw cycles.

Anti-BANF1 Rabbit Monoclonal Antibody - Protein Information

Name BANF1 {ECO:0000303|PubMed:21549337, ECO:0000312|HGNC:HGNC:17397}

Function

Non-specific DNA-binding protein that plays key roles in mitotic nuclear reassembly, chromatin organization, DNA damage response, gene expression and intrinsic immunity against foreign DNA (PubMed:10908652, PubMed:11792822, PubMed:12163470, PubMed:18005698, PubMed:25991860, PubMed:28841419, PubMed:31796734, PubMed:32792394). Contains two non-specific double-stranded DNA (dsDNA)-binding sites which promote DNA cross-bridging (PubMed:9465049). Plays a key role in nuclear membrane reformation at the end of mitosis by driving formation of a single nucleus in a spindle-independent manner (PubMed:28841419). Transiently cross-bridges anaphase chromosomes via its ability to bridge distant DNA sites, leading to the formation of a dense chromatin network at the chromosome ensemble surface that limits membranes to the surface (PubMed:28841419). Also acts as a negative regulator of innate immune activation by restricting CGAS activity toward self-DNA upon acute loss of nuclear membrane integrity (PubMed:32792394). Outcompetes CGAS for DNA-binding, thereby preventing CGAS activation and subsequent damaging autoinflammatory responses (PubMed:32792394). Also involved in DNA damage response: interacts with PARP1 in response to oxidative stress, thereby inhibiting the ADP-ribosyltransferase activity of PARP1 (PubMed:31796734). Involved in the recognition of exogenous dsDNA in the cytosol: associates with exogenous dsDNA immediately after its appearance in the cytosol at endosome breakdown and is required to avoid autophagy (PubMed:25991860). In case of poxvirus infection, has an antiviral activity by blocking viral DNA replication (PubMed:18005698).

Cellular Location

Nucleus. Chromosome. Nucleus envelope. Cytoplasm. Note=Significantly enriched at the nuclear inner membrane, diffusely throughout the nucleus during interphase and concentrated at the chromosomes during the M-phase (PubMed:16495336, PubMed:24600006). The phosphorylated form (by VRK1) shows a cytoplasmic localization whereas the unphosphorylated form locates almost exclusively in the nucleus (PubMed:16495336, PubMed:24600006). May be included in HIV-1 virions via its interaction with viral GAG polyprotein (PubMed:14645565)

Tissue Location

Widely expressed. Expressed in colon, brain, heart, kidney, liver, lung, ovary, pancreas, placenta, prostate, skeletal muscle, small intestine, spleen and testis. Not detected in thymus and peripheral blood leukocytes.

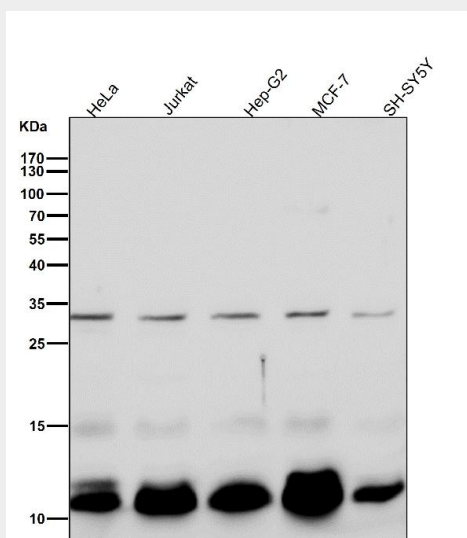
Anti-BANF1 Rabbit Monoclonal Antibody - Protocols

Provided below are standard protocols that you may find useful for product applications.

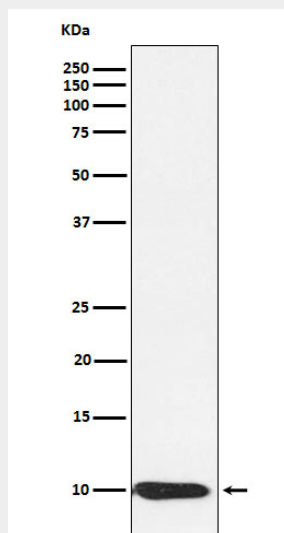
- [Western Blot](#)
- [Blocking Peptides](#)

- [Dot Blot](#)
- [Immunohistochemistry](#)
- [Immunofluorescence](#)
- [Immunoprecipitation](#)
- [Flow Cytometry](#)
- [Cell Culture](#)

Anti-BANF1 Rabbit Monoclonal Antibody - Images



All lanes use the Antibody at 1:1K dilution for 1 hour at room temperature.



Western blot analysis of BANF1 expression in HeLa cell lysate.