

Anti-NXF1 Rabbit Monoclonal Antibody
Catalog # ABO15464**Specification**

Anti-NXF1 Rabbit Monoclonal Antibody - Product Information

Application	WB, IHC, IF, ICC, IP
Primary Accession	Q9UBU9
Host	Rabbit
Isotype	IgG
Reactivity	Human
Clonality	Monoclonal
Format	Liquid

Description

Anti-NXF1 Rabbit Monoclonal Antibody . Tested in WB, IHC, ICC/IF, IP applications. This antibody reacts with Human.

Anti-NXF1 Rabbit Monoclonal Antibody - Additional Information

Gene ID 10482

Other Names

Nuclear RNA export factor 1, Tip-associated protein, Tip-associating protein, mRNA export factor TAP, NXF1, TAP

Calculated MW

70 kDa KDa

Application Details

WB 1:500-1:2000
IHC 1:50-1:200
ICC/IF 1:50-1:200
IP 1:50

Contents

Rabbit IgG in phosphate buffered saline, pH 7.4, 150mM NaCl, 0.02% sodium azide and 50% glycerol, 0.4-0.5mg/ml BSA.

Immunogen

A synthesized peptide derived from human NXF1

Purification

Affinity-chromatography

Storage

Store at -20°C for one year. For short term storage and frequent use, store at 4°C for up to one month. Avoid repeated freeze-thaw cycles.

Anti-NXF1 Rabbit Monoclonal Antibody - Protein Information

Name NXF1

Synonyms TAP

Function

Involved in the nuclear export of mRNA species bearing retroviral constitutive transport elements (CTE) and in the export of mRNA from the nucleus to the cytoplasm (TAP/NFX1 pathway) (PubMed:10924507). The NXF1-NXT1 heterodimer is involved in the export of HSP70 mRNA in conjunction with ALYREF/THOC4 and THOC5 components of the TREX complex (PubMed:18364396, PubMed:19165146, PubMed:9660949). ALYREF/THOC4-bound mRNA is thought to be transferred to the NXF1-NXT1 heterodimer for export (PubMed:18364396, PubMed:19165146, PubMed:9660949). Also involved in nuclear export of m6A-containing mRNAs: interaction between SRSF3 and YTHDC1 facilitates m6A-containing mRNA-binding to both SRSF3 and NXF1, promoting mRNA nuclear export (PubMed:28984244).

Cellular Location

Nucleus. Nucleus, nucleoplasm Nucleus speckle. Nucleus, nuclear pore complex. Nucleus envelope. Cytoplasm. Cytoplasm, Stress granule. Note=Localized predominantly in the nucleoplasm and at both the nucleoplasmic and cytoplasmic faces of the nuclear pore complex. Shuttles between the nucleus and the cytoplasm. Travels to the cytoplasm as part of the exon junction complex (EJC) bound to mRNA. The association with the TREX complex seems to occur in regions surrounding nuclear speckles known as perispeckles (PubMed:23826332). Nucleus; nuclear rim (PubMed:25662211)

Tissue Location

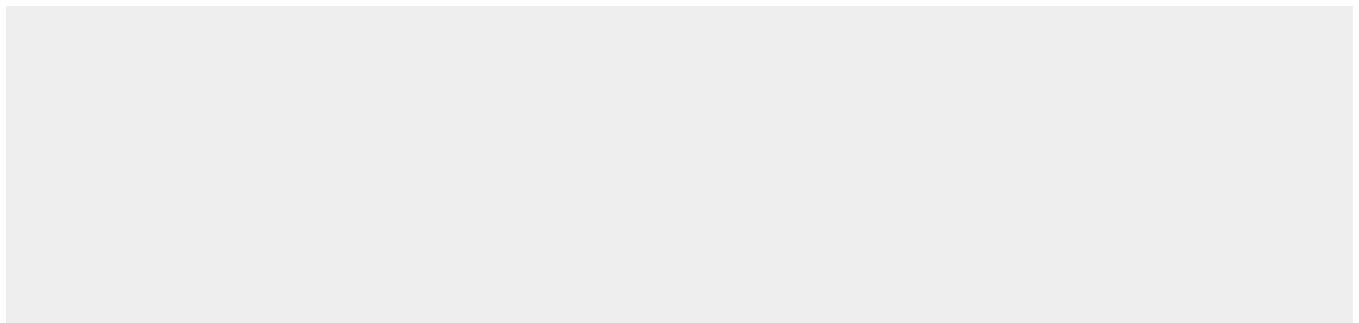
Expressed ubiquitously.

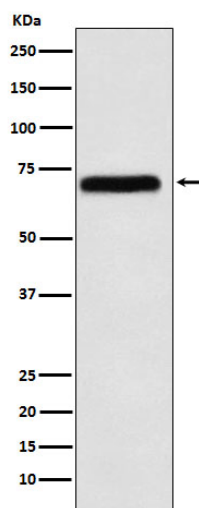
Anti-NXF1 Rabbit Monoclonal Antibody - Protocols

Provided below are standard protocols that you may find useful for product applications.

- [Western Blot](#)
- [Blocking Peptides](#)
- [Dot Blot](#)
- [Immunohistochemistry](#)
- [Immunofluorescence](#)
- [Immunoprecipitation](#)
- [Flow Cytometry](#)
- [Cell Culture](#)

Anti-NXF1 Rabbit Monoclonal Antibody - Images





Western blot analysis of NXF1 expression in K562 cell lysate.