

**Anti-Exportin 5 Rabbit Monoclonal Antibody**  
**Catalog # ABO15474****Specification**

---

**Anti-Exportin 5 Rabbit Monoclonal Antibody - Product Information**

Application	WB, IHC, IF, ICC, FC
Primary Accession	<a href="#">Q9HAV4</a>
Host	Rabbit
Isotype	IgG
Reactivity	Rat, Human, Mouse
Clonality	Monoclonal
Format	Liquid

**Description**

Anti-Exportin 5 Rabbit Monoclonal Antibody . Tested in WB, IHC, ICC/IF, Flow Cytometry applications. This antibody reacts with Human, Mouse, Rat.

**Anti-Exportin 5 Rabbit Monoclonal Antibody - Additional Information**

**Gene ID** 57510

**Other Names**

Exportin-5, Exp5, Ran-binding protein 21, XPO5, KIAA1291, RANBP21

**Calculated MW**

136 kDa KDa

**Application Details**

WB 1:500-1:2000<br>IHC 1:50-1:200<br>ICC/IF 1:50-1:200<br>FC 1:50

**Contents**

Rabbit IgG in phosphate buffered saline, pH 7.4, 150mM NaCl, 0.02% sodium azide and 50% glycerol, 0.4-0.5mg/ml BSA.

**Immunogen**

A synthesized peptide derived from human Exportin 5

**Purification**

Affinity-chromatography

**Storage**

**Store at -20°C for one year. For short term storage and frequent use, store at 4°C for up to one month. Avoid repeated freeze-thaw cycles.**

**Anti-Exportin 5 Rabbit Monoclonal Antibody - Protein Information**

**Name** XPO5

**Synonyms** KIAA1291, RANBP21

**Function**

Mediates the nuclear export of proteins bearing a double-stranded RNA binding domain (dsRBD) and double-stranded RNAs (cargos). XPO5 in the nucleus binds cooperatively to the RNA and to the GTPase Ran in its active GTP-bound form. Proteins containing dsRBDs can associate with this trimeric complex through the RNA. Docking of this complex to the nuclear pore complex (NPC) is mediated through binding to nucleoporins. Upon transit of a nuclear export complex into the cytoplasm, hydrolysis of Ran-GTP to Ran-GDP (induced by RANBP1 and RANGAP1, respectively) cause disassembly of the complex and release of the cargo from the export receptor. XPO5 then returns to the nuclear compartment by diffusion through the nuclear pore complex, to mediate another round of transport. The directionality of nuclear export is thought to be conferred by an asymmetric distribution of the GTP- and GDP-bound forms of Ran between the cytoplasm and nucleus. Overexpression may in some circumstances enhance RNA-mediated gene silencing (RNAi). Mediates nuclear export of isoform 5 of ADAR/ADAR1 in a RanGTP-dependent manner. (Microbial infection) Mediates the nuclear export of adenovirus VA1 dsRNA.

**Cellular Location**

Nucleus. Cytoplasm. Note=Shuttles between the nucleus and the cytoplasm

**Tissue Location**

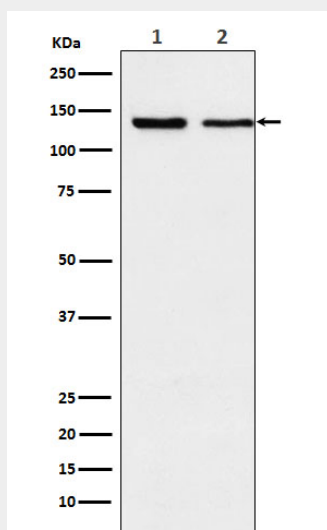
Expressed in heart, brain, placenta, lung, skeletal muscle, kidney and pancreas.

**Anti-Exportin 5 Rabbit Monoclonal Antibody - Protocols**

Provided below are standard protocols that you may find useful for product applications.

- [Western Blot](#)
- [Blocking Peptides](#)
- [Dot Blot](#)
- [Immunohistochemistry](#)
- [Immunofluorescence](#)
- [Immunoprecipitation](#)
- [Flow Cytometry](#)
- [Cell Culture](#)

**Anti-Exportin 5 Rabbit Monoclonal Antibody - Images**



Western blot analysis of Exportin 5 expression in (1) K562 cell lysate; (2) NIH/3T3 cell lysate.