

Anti-CBS Rabbit Monoclonal Antibody
Catalog # ABO15479**Specification**

Anti-CBS Rabbit Monoclonal Antibody - Product Information

| | |
|-------------------|------------------------|
| Application | WB, IHC, IF, ICC |
| Primary Accession | P35520 |
| Host | Rabbit |
| Isotype | IgG |
| Reactivity | Human |
| Clonality | Monoclonal |
| Format | Liquid |

Description

Anti-CBS Rabbit Monoclonal Antibody . Tested in WB, IHC, ICC/IF applications. This antibody reacts with Human.

Anti-CBS Rabbit Monoclonal Antibody - Additional Information

Gene ID 102724560;875

Other Names

Cystathionine beta-synthase, 4.2.1.22, Beta-thionase, Serine sulfhydrase, CBS

Calculated MW

61 kDa KDa

Application Details

WB 1:500-1:2000
IHC 1:50-1:200
ICC/IF 1:50-1:200

Contents

Rabbit IgG in phosphate buffered saline, pH 7.4, 150mM NaCl, 0.02% sodium azide and 50% glycerol, 0.4-0.5mg/ml BSA.

Immunogen

A synthesized peptide derived from human CBS

Purification

Affinity-chromatography

Storage

Store at -20°C for one year. For short term storage and frequent use, store at 4°C for up to one month. Avoid repeated freeze-thaw cycles.

Anti-CBS Rabbit Monoclonal Antibody - Protein Information

Name CBS

Function

Hydro-lyase catalyzing the first step of the transsulfuration pathway, where the hydroxyl group of L-serine is displaced by L-homocysteine in a beta-replacement reaction to form L-cystathionine, the precursor of L-cysteine. This catabolic route allows the elimination of L-methionine and the toxic metabolite L-homocysteine (PubMed: [20506325](http://www.uniprot.org/citations/20506325), PubMed: [23974653](http://www.uniprot.org/citations/23974653), PubMed: [23981774](http://www.uniprot.org/citations/23981774)). Also involved in the production of hydrogen sulfide, a gasotransmitter with signaling and cytoprotective effects on neurons (By similarity).

Cellular Location

Cytoplasm. Nucleus

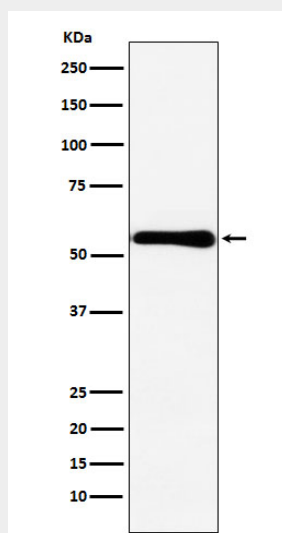
Tissue Location

In the adult strongly expressed in liver and pancreas, some expression in heart and brain, weak expression in lung and kidney. In the fetus, expressed in brain, liver and kidney

Anti-CBS Rabbit Monoclonal Antibody - Protocols

Provided below are standard protocols that you may find useful for product applications.

- [Western Blot](#)
- [Blocking Peptides](#)
- [Dot Blot](#)
- [Immunohistochemistry](#)
- [Immunofluorescence](#)
- [Immunoprecipitation](#)
- [Flow Cytometry](#)
- [Cell Culture](#)

Anti-CBS Rabbit Monoclonal Antibody - Images

Western blot analysis of CBS expression in MCF7 cell lysate.