

Anti-PSMD4 Rabbit Monoclonal Antibody
Catalog # ABO15485**Specification**

Anti-PSMD4 Rabbit Monoclonal Antibody - Product Information

Application	WB, IP, FC
Primary Accession	P55036
Host	Rabbit
Isotype	IgG
Reactivity	Rat, Human, Mouse
Clonality	Monoclonal
Format	Liquid

Description

Anti-PSMD4 Rabbit Monoclonal Antibody . Tested in WB, IP, Flow Cytometry applications. This antibody reacts with Human, Mouse, Rat.

Anti-PSMD4 Rabbit Monoclonal Antibody - Additional Information

Gene ID 5710

Other Names

26S proteasome non-ATPase regulatory subunit 4, 26S proteasome regulatory subunit RPN10, 26S proteasome regulatory subunit S5A, Antisecretory factor 1, AF, ASF, Multiubiquitin chain-binding protein, PSMD4, MCB1

Application Details

WB 1:500-1:2000
IP 1:50
FC 1:100

Contents

Rabbit IgG in phosphate buffered saline, pH 7.4, 150mM NaCl, 0.02% sodium azide and 50% glycerol, 0.4-0.5mg/ml BSA.

Immunogen

A synthesized peptide derived from human PSMD4

Purification

Affinity-chromatography

Storage

Store at -20°C for one year. For short term storage and frequent use, store at 4°C for up to one month. Avoid repeated freeze-thaw cycles.

Anti-PSMD4 Rabbit Monoclonal Antibody - Protein Information

Name PSMD4

Synonyms MCB1

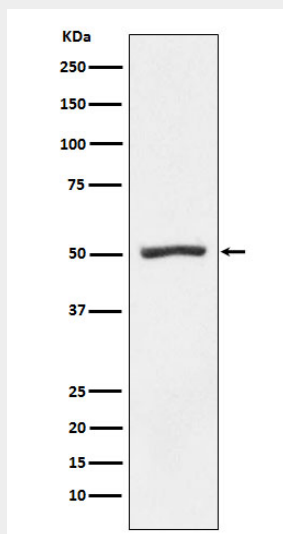
Function

Component of the 26S proteasome, a multiprotein complex involved in the ATP-dependent degradation of ubiquitinated proteins. This complex plays a key role in the maintenance of protein homeostasis by removing misfolded or damaged proteins, which could impair cellular functions, and by removing proteins whose functions are no longer required. Therefore, the proteasome participates in numerous cellular processes, including cell cycle progression, apoptosis, or DNA damage repair. PSMD4 acts as an ubiquitin receptor subunit through ubiquitin- interacting motifs and selects ubiquitin-conjugates for destruction. Displays a preferred selectivity for longer polyubiquitin chains.

Anti-PSMD4 Rabbit Monoclonal Antibody - Protocols

Provided below are standard protocols that you may find useful for product applications.

- [Western Blot](#)
- [Blocking Peptides](#)
- [Dot Blot](#)
- [Immunohistochemistry](#)
- [Immunofluorescence](#)
- [Immunoprecipitation](#)
- [Flow Cytometry](#)
- [Cell Culture](#)

Anti-PSMD4 Rabbit Monoclonal Antibody - Images

Western blot analysis of Proteasome 19S S5A expression in K562 cell lysate.