

**Anti-Mammaglobin A Rabbit Monoclonal Antibody**  
**Catalog # ABO15486****Specification**

---

**Anti-Mammaglobin A Rabbit Monoclonal Antibody - Product Information**

Application	WB, IHC
Primary Accession	<a href="#">Q13296</a>
Host	Rabbit
Isotype	IgG
Reactivity	Rat, Human
Clonality	Monoclonal
Format	Liquid

**Description**

Anti-Mammaglobin A Rabbit Monoclonal Antibody . Tested in WB, IHC applications. This antibody reacts with Human, Rat.

**Anti-Mammaglobin A Rabbit Monoclonal Antibody - Additional Information**

**Gene ID** 4250

**Other Names**

Mammaglobin-A, Mammaglobin-1, Secretoglobin family 2A member 2, SCGB2A2, MGB1, UGB2

**Application Details**

WB 1:500-1:2000<br>IHC 1:50-1:200

**Contents**

Rabbit IgG in phosphate buffered saline, pH 7.4, 150mM NaCl, 0.02% sodium azide and 50% glycerol, 0.4-0.5mg/ml BSA.

**Immunogen**

A synthesized peptide derived from human Mammaglobin A

**Purification**

Affinity-chromatography

**Storage**

**Store at -20°C for one year. For short term storage and frequent use, store at 4°C for up to one month. Avoid repeated freeze-thaw cycles.**

**Anti-Mammaglobin A Rabbit Monoclonal Antibody - Protein Information**

**Name** SCGB2A2

**Synonyms** MGB1, UGB2

**Cellular Location**

Secreted.

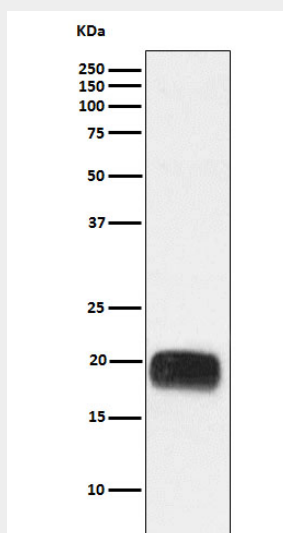
**Tissue Location**

Mammary gland specific. Over-expressed in breast cancer

**Anti-Mammaglobin A Rabbit Monoclonal Antibody - Protocols**

Provided below are standard protocols that you may find useful for product applications.

- [Western Blot](#)
- [Blocking Peptides](#)
- [Dot Blot](#)
- [Immunohistochemistry](#)
- [Immunofluorescence](#)
- [Immunoprecipitation](#)
- [Flow Cytometry](#)
- [Cell Culture](#)

**Anti-Mammaglobin A Rabbit Monoclonal Antibody - Images**

Western blot analysis of Mammaglobin A expression in Human breast cancer lysate.