

Anti-Fbx32 Rabbit Monoclonal Antibody
Catalog # ABO15488**Specification**

Anti-Fbx32 Rabbit Monoclonal Antibody - Product Information

Application	WB, IF, ICC
Primary Accession	Q969P5
Host	Rabbit
Isotype	IgG
Reactivity	Rat, Human, Mouse
Clonality	Monoclonal
Format	Liquid

Description

Anti-Fbx32 Rabbit Monoclonal Antibody . Tested in WB, ICC/IF applications. This antibody reacts with Human, Mouse, Rat.

Anti-Fbx32 Rabbit Monoclonal Antibody - Additional Information

Gene ID 114907

Other Names

F-box only protein 32, Atrogin-1, Muscle atrophy F-box protein, MAFbx, FBXO32

Calculated MW

42 kDa KDa

Application Details

WB 1:500-1:2000
ICC/IF 1:50-1:200

Contents

Rabbit IgG in phosphate buffered saline, pH 7.4, 150mM NaCl, 0.02% sodium azide and 50% glycerol, 0.4-0.5mg/ml BSA.

Immunogen

A synthesized peptide derived from human Fbx32

Purification

Affinity-chromatography

Storage

Store at -20°C for one year. For short term storage and frequent use, store at 4°C for up to one month. Avoid repeated freeze-thaw cycles.

Anti-Fbx32 Rabbit Monoclonal Antibody - Protein Information

Name FBXO32

Function

Substrate recognition component of a SCF (SKP1-CUL1-F-box protein) E3 ubiquitin-protein ligase complex which mediates the ubiquitination and subsequent proteasomal degradation of target proteins. Probably recognizes and binds to phosphorylated target proteins during skeletal muscle atrophy. Recognizes TERF1.

Cellular Location

Cytoplasm. Nucleus Note=Shuttles between cytoplasm and the nucleus

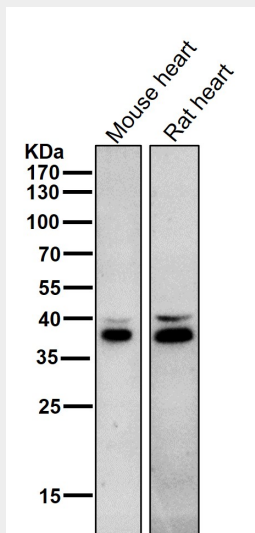
Tissue Location

Specifically expressed in cardiac and skeletal muscle

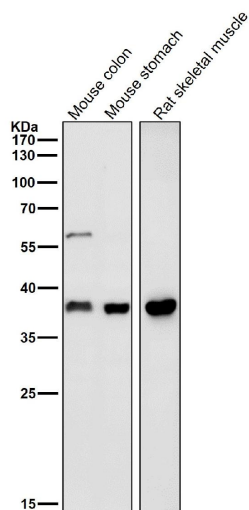
Anti-Fbx32 Rabbit Monoclonal Antibody - Protocols

Provided below are standard protocols that you may find useful for product applications.

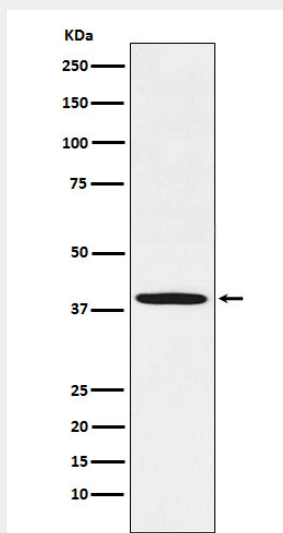
- [Western Blot](#)
- [Blocking Peptides](#)
- [Dot Blot](#)
- [Immunohistochemistry](#)
- [Immunofluorescence](#)
- [Immunoprecipitation](#)
- [Flow Cytometry](#)
- [Cell Culture](#)

Anti-Fbx32 Rabbit Monoclonal Antibody - Images

All lanes use the Antibody at 1:1K dilution for 1 hour at room temperature.



All lanes use the Antibody at 1:1K dilution for 1 hour at room temperature.



Western blot analysis of Fbx32 expression in Human skeletal muscle lysate.