

## Anti-Integrin alpha 9 Rabbit Monoclonal Antibody Catalog # ABO15496

### Specification

---

#### Anti-Integrin alpha 9 Rabbit Monoclonal Antibody - Product Information

Application	WB, IHC
Primary Accession	<a href="#">Q13797</a>
Host	Rabbit
Isotype	IgG
Reactivity	Rat, Human, Mouse
Clonality	Monoclonal
Format	Liquid

#### Description

Anti-Integrin alpha 9 Rabbit Monoclonal Antibody . Tested in WB, IHC applications. This antibody reacts with Human, Mouse, Rat.

#### Anti-Integrin alpha 9 Rabbit Monoclonal Antibody - Additional Information

**Gene ID** 3680

#### Other Names

Integrin alpha-9, Integrin alpha-RLC, ITGA9

#### Application Details

WB 1:500-1:2000<br>IHC 1:50-1:200

#### Contents

Rabbit IgG in phosphate buffered saline, pH 7.4, 150mM NaCl, 0.02% sodium azide and 50% glycerol, 0.4-0.5mg/ml BSA.

#### Immunogen

A synthesized peptide derived from human Integrin alpha 9

#### Purification

Affinity-chromatography

Storage

**Store at -20°C for one year. For short term storage and frequent use, store at 4°C for up to one month. Avoid repeated freeze-thaw cycles.**

#### Anti-Integrin alpha 9 Rabbit Monoclonal Antibody - Protein Information

**Name** ITGA9

#### Function

Integrin alpha-9/beta-1 (ITGA9:ITGB1) is a receptor for VCAM1, cytotactin and osteopontin. It recognizes the sequence A-E-I-D- G-I-E-L in cytotactin. ITGA9:ITGB1 may play a crucial role in

SVEP1/polydom-mediated myoblast cell adhesion (By similarity). Integrin ITGA9:ITGB1 represses PRKCA-mediated L-type voltage-gated channel Ca(2+) influx and ROCK-mediated calcium sensitivity in vascular smooth muscle cells via its interaction with SVEP1, thereby inhibiting vasoconstriction (PubMed:<a href="http://www.uniprot.org/citations/35802072" target="\_blank">35802072</a>).

#### Cellular Location

Membrane; Single-pass type I membrane protein

#### Tissue Location

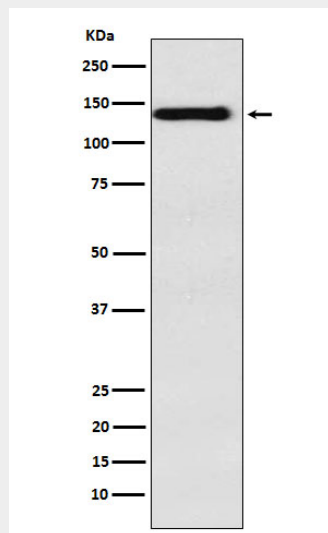
Expressed in vascular smooth muscle cells (at protein level) (PubMed:35802072). Expressed in the airway epithelium (at protein level) (PubMed:8245132).

### Anti-Integrin alpha 9 Rabbit Monoclonal Antibody - Protocols

Provided below are standard protocols that you may find useful for product applications.

- [Western Blot](#)
- [Blocking Peptides](#)
- [Dot Blot](#)
- [Immunohistochemistry](#)
- [Immunofluorescence](#)
- [Immunoprecipitation](#)
- [Flow Cytometry](#)
- [Cell Culture](#)

### Anti-Integrin alpha 9 Rabbit Monoclonal Antibody - Images



Western blot analysis of Integrin alpha 9 expression in HepG2 cell lysate.