

Anti-GRB7 Rabbit Monoclonal Antibody
Catalog # ABO15510**Specification**

Anti-GRB7 Rabbit Monoclonal Antibody - Product Information

Application	WB, IHC
Primary Accession	Q14451
Host	Rabbit
Isotype	IgG
Reactivity	Rat, Human, Mouse
Clonality	Monoclonal
Format	Liquid

Description

Anti-GRB7 Rabbit Monoclonal Antibody . Tested in WB, IHC applications. This antibody reacts with Human, Mouse, Rat.

Anti-GRB7 Rabbit Monoclonal Antibody - Additional Information

Gene ID 2886

Other Names

Growth factor receptor-bound protein 7, B47, Epidermal growth factor receptor GRB-7, GRB7 adapter protein, GRB7

Application Details

WB 1:1000-1:5000
IHC 1:100-1:500

Contents

Rabbit IgG in phosphate buffered saline, pH 7.4, 150mM NaCl, 0.02% sodium azide and 50% glycerol, 0.4-0.5mg/ml BSA.

Immunogen

A synthesized peptide derived from human GRB7

Purification

Affinity-chromatography

Storage

Store at -20°C for one year. For short term storage and frequent use, store at 4°C for up to one month. Avoid repeated freeze-thaw cycles.

Anti-GRB7 Rabbit Monoclonal Antibody - Protein Information

Name GRB7

Function

Adapter protein that interacts with the cytoplasmic domain of numerous receptor kinases and

modulates down-stream signaling. Promotes activation of down-stream protein kinases, including STAT3, AKT1, MAPK1 and/or MAPK3. Promotes activation of HRAS. Plays a role in signal transduction in response to EGF. Plays a role in the regulation of cell proliferation and cell migration. Plays a role in the assembly and stability of RNA stress granules. Binds to the 5'UTR of target mRNA molecules and represses translation of target mRNA species, when not phosphorylated. Phosphorylation impairs RNA binding and promotes stress granule disassembly during recovery after cellular stress (By similarity).

Cellular Location

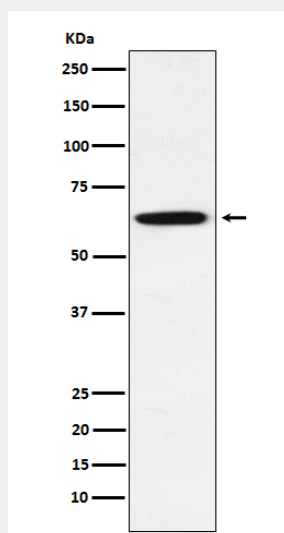
Cytoplasm. Cell junction, focal adhesion. Cell membrane; Peripheral membrane protein; Cytoplasmic side. Cytoplasmic granule {ECO:0000250|UniProtKB:Q03160}. Cell projection. Note=Predominantly cytoplasmic. Detected in stress granules, where mRNA is stored under stress conditions {ECO:0000250|UniProtKB:Q03160}

Anti-GRB7 Rabbit Monoclonal Antibody - Protocols

Provided below are standard protocols that you may find useful for product applications.

- [Western Blot](#)
- [Blocking Peptides](#)
- [Dot Blot](#)
- [Immunohistochemistry](#)
- [Immunofluorescence](#)
- [Immunoprecipitation](#)
- [Flow Cytometry](#)
- [Cell Culture](#)

Anti-GRB7 Rabbit Monoclonal Antibody - Images



Western blot analysis of GRB7 expression in A431 cell lysate.