

**Anti-NKX2.2 Rabbit Monoclonal Antibody**  
**Catalog # ABO15511****Specification**

---

**Anti-NKX2.2 Rabbit Monoclonal Antibody - Product Information**

Application	IHC, IF, ICC
Primary Accession	<a href="#">O95096</a>
Host	Rabbit
Isotype	IgG
Reactivity	Rat, Human, Mouse
Clonality	Monoclonal
Format	Liquid

**Description**

Anti-NKX2.2 Rabbit Monoclonal Antibody . Tested in IHC, ICC/IF applications. This antibody reacts with Human, Mouse, Rat.

**Anti-NKX2.2 Rabbit Monoclonal Antibody - Additional Information**

**Gene ID** 4821

**Other Names**

Homeobox protein Nkx-2.2, Homeobox protein NK-2 homolog B, NKX2-2, NKX2.2, NKX2B

**Application Details**

IHC 1:100-1:500<br>ICC/IF 1:50-1:100

**Contents**

Rabbit IgG in phosphate buffered saline, pH 7.4, 150mM NaCl, 0.02% sodium azide and 50% glycerol, 0.4-0.5mg/ml BSA.

**Immunogen**

A synthesized peptide derived from human NKX2.2

**Purification**

Affinity-chromatography

**Storage**

**Store at -20°C for one year. For short term storage and frequent use, store at 4°C for up to one month. Avoid repeated freeze-thaw cycles.**

**Anti-NKX2.2 Rabbit Monoclonal Antibody - Protein Information**

**Name** NKX2-2

**Synonyms** NKX2.2, NKX2B

**Function**

Transcriptional activator involved in the development of insulin-producing beta cells in the endocrine pancreas (By similarity). May also be involved in specifying diencephalic neuromeric boundaries, and in controlling the expression of genes that play a role in axonal guidance. Binds to elements within the NEUROD1 promoter (By similarity).

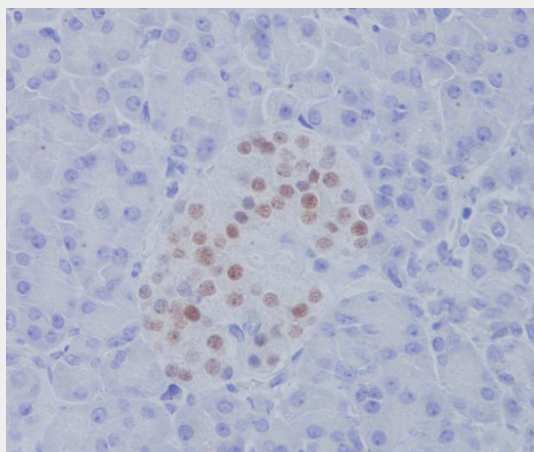
**Cellular Location**

Nucleus {ECO:0000255|PROSITE-ProRule:PRU00108}.

**Anti-NKX2.2 Rabbit Monoclonal Antibody - Protocols**

Provided below are standard protocols that you may find useful for product applications.

- [Western Blot](#)
- [Blocking Peptides](#)
- [Dot Blot](#)
- [Immunohistochemistry](#)
- [Immunofluorescence](#)
- [Immunoprecipitation](#)
- [Flow Cytometry](#)
- [Cell Culture](#)

**Anti-NKX2.2 Rabbit Monoclonal Antibody - Images**

Immunohistochemical analysis of paraffin-embedded human pancreas, using NKX2.2 Antibody.