

Anti-RNF40 Rabbit Monoclonal Antibody
Catalog # ABO15528**Specification**

Anti-RNF40 Rabbit Monoclonal Antibody - Product Information

Application	WB, IHC, IP
Primary Accession	O75150
Host	Rabbit
Isotype	IgG
Reactivity	Rat, Human, Mouse
Clonality	Monoclonal
Format	Liquid

Description

Anti-RNF40 Rabbit Monoclonal Antibody . Tested in WB, IHC, IP applications. This antibody reacts with Human, Mouse, Rat.

Anti-RNF40 Rabbit Monoclonal Antibody - Additional Information

Gene ID 9810

Other Names

E3 ubiquitin-protein ligase BRE1B, BRE1-B, 2.3.2.27, 95 kDa retinoblastoma-associated protein, RBP95, RING finger protein 40, RING-type E3 ubiquitin transferase BRE1B, RNF40, BRE1B, KIAA0661

Calculated MW

130 kDa KDa

Application Details

WB 1:500-1:2000
IHC 1:50-1:200
IP 1:50

Contents

Rabbit IgG in phosphate buffered saline, pH 7.4, 150mM NaCl, 0.02% sodium azide and 50% glycerol, 0.4-0.5mg/ml BSA.

Immunogen

A synthesized peptide derived from human RNF40

Purification

Affinity-chromatography

Storage

Store at -20°C for one year. For short term storage and frequent use, store at 4°C for up to one month. Avoid repeated freeze-thaw cycles.

Anti-RNF40 Rabbit Monoclonal Antibody - Protein Information

Name RNF40

Synonyms BRE1B, KIAA0661

Function

Component of the RNF20/40 E3 ubiquitin-protein ligase complex that mediates monoubiquitination of 'Lys-120' of histone H2B (H2BK120ub1). H2BK120ub1 gives a specific tag for epigenetic transcriptional activation and is also prerequisite for histone H3 'Lys-4' and 'Lys-79' methylation (H3K4me and H3K79me, respectively). It thereby plays a central role in histone code and gene regulation. The RNF20/40 complex forms a H2B ubiquitin ligase complex in cooperation with the E2 enzyme UBE2A or UBE2B; reports about the cooperation with UBE2E1/UBCH are contradictory. Required for transcriptional activation of Hox genes.

Cellular Location

Nucleus.

Tissue Location

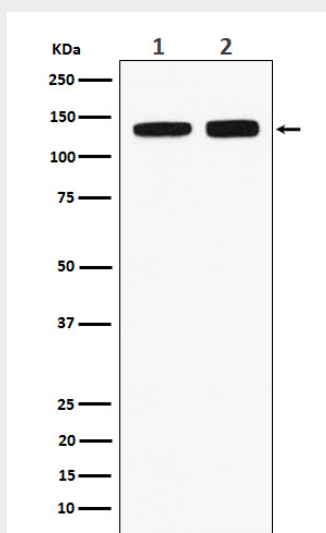
Ubiquitously expressed. Expressed at higher level in testis, heart and pancreas, while it is only weakly expressed in lung, skeletal muscle and small intestine

Anti-RNF40 Rabbit Monoclonal Antibody - Protocols

Provided below are standard protocols that you may find useful for product applications.

- [Western Blot](#)
- [Blocking Peptides](#)
- [Dot Blot](#)
- [Immunohistochemistry](#)
- [Immunofluorescence](#)
- [Immunoprecipitation](#)
- [Flow Cytometry](#)
- [Cell Culture](#)

Anti-RNF40 Rabbit Monoclonal Antibody - Images



Western blot analysis of RNF40 expression in (1) HeLa cell lysate; (2) RAW264.7 cell lysate.