

Anti-SRSF3 Rabbit Monoclonal Antibody
Catalog # ABO15529**Specification**

Anti-SRSF3 Rabbit Monoclonal Antibody - Product Information

Application	WB, IHC, IF, ICC, FC
Primary Accession	P84103
Host	Rabbit
Isotype	IgG
Reactivity	Rat, Human, Mouse
Clonality	Monoclonal
Format	Liquid

Description

Anti-SRSF3 Rabbit Monoclonal Antibody . Tested in WB, IHC, ICC/IF, Flow Cytometry applications. This antibody reacts with Human, Mouse, Rat.

Anti-SRSF3 Rabbit Monoclonal Antibody - Additional Information

Gene ID 6428

Other Names

Serine/arginine-rich splicing factor 3, Pre-mRNA-splicing factor SRP20, Splicing factor, arginine/serine-rich 3, SRSF3, SFRS3, SRP20

Calculated MW

19 kDa KDa

Application Details

WB 1:500-1:2000
IHC 1:50-1:200
ICC/IF 1:50-1:200
FC 1:100

Contents

Rabbit IgG in phosphate buffered saline, pH 7.4, 150mM NaCl, 0.02% sodium azide and 50% glycerol, 0.4-0.5mg/ml BSA.

Immunogen

A synthesized peptide derived from human SRSF3

Purification

Affinity-chromatography

Storage

Store at -20°C for one year. For short term storage and frequent use, store at 4°C for up to one month. Avoid repeated freeze-thaw cycles.

Anti-SRSF3 Rabbit Monoclonal Antibody - Protein Information

Name SRSF3

Synonyms SFRS3, SRP20

Function

Splicing factor, which binds the consensus motif 5'- C[ACU][AU]C[ACU][AC]C-3' within pre-mRNA and promotes specific exons inclusion during alternative splicing (PubMed:17036044, PubMed:26876937, PubMed:32440474). Interaction with YTHDC1, a RNA- binding protein that recognizes and binds N6-methyladenosine (m6A)-containing RNAs, promotes recruitment of SRSF3 to its mRNA-binding elements adjacent to m6A sites within exons (PubMed:26876937). Also functions as an adapter involved in mRNA nuclear export (PubMed:11336712, PubMed:18364396, PubMed:28984244). Binds mRNA which is thought to be transferred to the NXF1-NXT1 heterodimer for export (TAP/NXF1 pathway); enhances NXF1-NXT1 RNA-binding activity (PubMed:11336712, PubMed:18364396). Involved in nuclear export of m6A- containing mRNAs via interaction with YTHDC1: interaction with YTHDC1 facilitates m6A-containing mRNA-binding to both SRSF3 and NXF1, promoting mRNA nuclear export (PubMed:28984244).

Cellular Location

Nucleus. Nucleus speckle. Cytoplasm. Note=Recruited to nuclear speckles following interaction with YTHDC1.

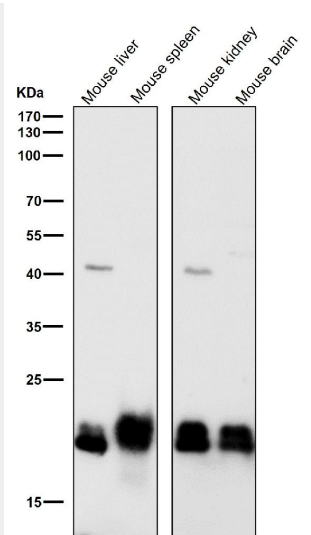
Anti-SRSF3 Rabbit Monoclonal Antibody - Protocols

Provided below are standard protocols that you may find useful for product applications.

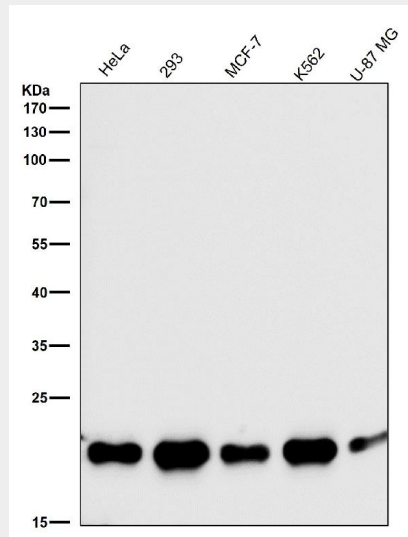
- [Western Blot](#)
- [Blocking Peptides](#)
- [Dot Blot](#)
- [Immunohistochemistry](#)
- [Immunofluorescence](#)
- [Immunoprecipitation](#)
- [Flow Cytometry](#)
- [Cell Culture](#)

Anti-SRSF3 Rabbit Monoclonal Antibody - Images

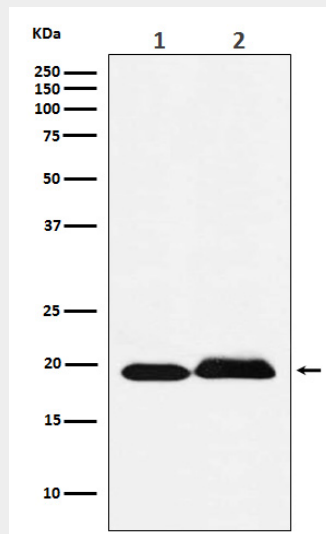




All lanes use the Antibody at 1:2K dilution for 1 hour at room temperature.



All lanes use the Antibody at 1:2K dilution for 1 hour at room temperature.



Western blot analysis of SRSF3 expression in (1) Jurkat cell lysate; (2) Rat brain lysate.