

Anti-ATAD2 Rabbit Monoclonal Antibody
Catalog # ABO15531**Specification**

Anti-ATAD2 Rabbit Monoclonal Antibody - Product Information

Application	WB, IF, ICC, FC
Primary Accession	Q6PL18
Host	Rabbit
Isotype	IgG
Reactivity	Human
Clonality	Monoclonal
Format	Liquid

Description

Anti-ATAD2 Rabbit Monoclonal Antibody . Tested in WB, ICC/IF, Flow Cytometry applications. This antibody reacts with Human.

Anti-ATAD2 Rabbit Monoclonal Antibody - Additional Information

Gene ID 29028

Other Names

ATPase family AAA domain-containing protein 2, 3.6.1.-, AAA nuclear coregulator cancer-associated protein, ANCCA, ATAD2

Calculated MW

180 kDa KDa

Application Details

WB 1:500-1:2000
ICC/IF 1:50-1:200
FC 1:50

Contents

Rabbit IgG in phosphate buffered saline, pH 7.4, 150mM NaCl, 0.02% sodium azide and 50% glycerol, 0.4-0.5mg/ml BSA.

Immunogen

A synthesized peptide derived from human ATAD2

Purification

Affinity-chromatography

Storage

Store at -20°C for one year. For short term storage and frequent use, store at 4°C for up to one month. Avoid repeated freeze-thaw cycles.

Anti-ATAD2 Rabbit Monoclonal Antibody - Protein Information

Name ATAD2

Function

May be a transcriptional coactivator of the nuclear receptor ESR1 required to induce the expression of a subset of estradiol target genes, such as CCND1, MYC and E2F1. May play a role in the recruitment or occupancy of CREBBP at some ESR1 target gene promoters. May be required for histone hyperacetylation. Involved in the estrogen-induced cell proliferation and cell cycle progression of breast cancer cells.

Cellular Location

Nucleus

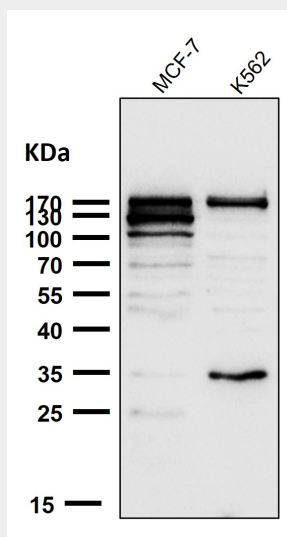
Tissue Location

Highly expressed in estrogen receptor positive breast tumors and in osteosarcoma tumors.

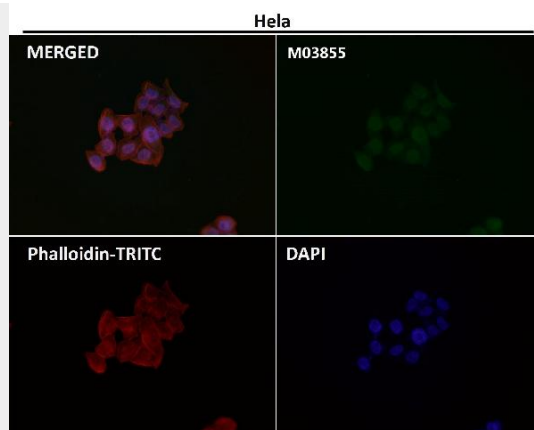
Anti-ATAD2 Rabbit Monoclonal Antibody - Protocols

Provided below are standard protocols that you may find useful for product applications.

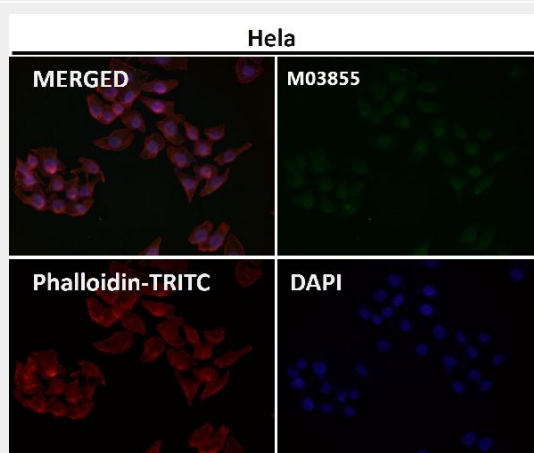
- [Western Blot](#)
- [Blocking Peptides](#)
- [Dot Blot](#)
- [Immunohistochemistry](#)
- [Immunofluorescence](#)
- [Immunoprecipitation](#)
- [Flow Cytometry](#)
- [Cell Culture](#)

Anti-ATAD2 Rabbit Monoclonal Antibody - Images

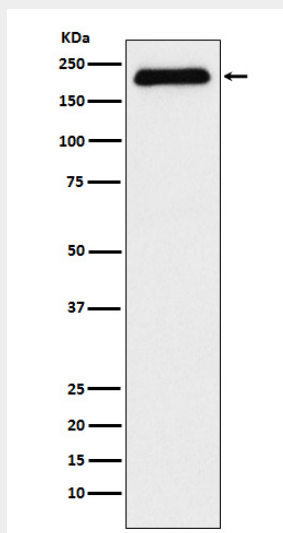
All lanes use the Antibody at 1:2K dilution for 1 hour at room temperature.



Immunofluorescent analysis using the Antibody at 1:50 dilution.



Immunofluorescent analysis using the Antibody at 1:150 dilution.



Western blot analysis of ATAD2 expression in MCF-7 cell lysate.