

Anti-Cenexin1 / ODF2 Rabbit Monoclonal Antibody
Catalog # ABO15534**Specification**

Anti-Cenexin1 / ODF2 Rabbit Monoclonal Antibody - Product Information

Application	WB, FC
Primary Accession	Q5BJF6
Host	Rabbit
Isotype	IgG
Reactivity	Human
Clonality	Monoclonal
Format	Liquid

Description

Anti-Cenexin1 / ODF2 Rabbit Monoclonal Antibody . Tested in WB, Flow Cytometry applications.
This antibody reacts with Human.

Anti-Cenexin1 / ODF2 Rabbit Monoclonal Antibody - Additional Information

Gene ID 4957

Other Names

Outer dense fiber protein 2, Cenexin, Outer dense fiber of sperm tails protein 2, ODF2

Calculated MW

95 kDa KDa

Application Details

WB 1:500-1:1000
FC 1:100

Contents

Rabbit IgG in phosphate buffered saline, pH 7.4, 150mM NaCl, 0.02% sodium azide and 50% glycerol, 0.4-0.5mg/ml BSA.

Immunogen

A synthesized peptide derived from human Cenexin1 / ODF2

Purification

Affinity-chromatography

Storage

Store at -20°C for one year. For short term storage and frequent use, store at 4°C for up to one month. Avoid repeated freeze-thaw cycles.

Anti-Cenexin1 / ODF2 Rabbit Monoclonal Antibody - Protein Information

Name ODF2

Function

Seems to be a major component of sperm tail outer dense fibers (ODF). ODFs are filamentous structures located on the outside of the axoneme in the midpiece and principal piece of the mammalian sperm tail and may help to maintain the passive elastic structures and elastic recoil of the sperm tail. May have a modulating influence on sperm motility. Functions as a general scaffold protein that is specifically localized at the distal/subdistal appendages of mother centrioles. Component of the centrosome matrix required for the localization of PLK1 and NIN to the centrosomes. Required for the formation and/or maintenance of normal CETN1 assembly.

Cellular Location

Cytoplasm, cytoskeleton, microtubule organizing center, centrosome. Cell projection, cilium {ECO:0000250|UniProtKB:A3KGV1}. Cytoplasm, cytoskeleton, microtubule organizing center, centrosome, centriole Cytoplasm, cytoskeleton, spindle pole {ECO:0000250|UniProtKB:A3KGV1} Cell projection, cilium, flagellum {ECO:0000250|UniProtKB:A3KGV1} Note=Localized at the microtubule organizing centers in interphase and spindle poles in mitosis. Localized at the distal/subdistal appendages of mother centrioles. {ECO:0000250|UniProtKB:A3KGV1}

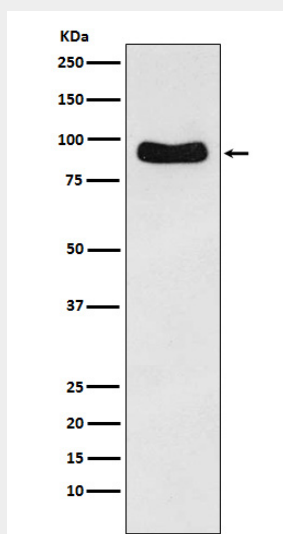
Tissue Location

Testis-specific (at protein level). Highly expressed in cytoplasm of step 2 round spermatids. Detected in the middle piece and extends to about half the principal piece of the sperm tails.

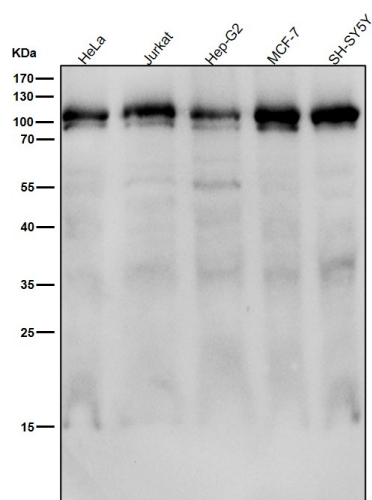
Anti-Cenexin1 / ODF2 Rabbit Monoclonal Antibody - Protocols

Provided below are standard protocols that you may find useful for product applications.

- [Western Blot](#)
- [Blocking Peptides](#)
- [Dot Blot](#)
- [Immunohistochemistry](#)
- [Immunofluorescence](#)
- [Immunoprecipitation](#)
- [Flow Cytometry](#)
- [Cell Culture](#)

Anti-Cenexin1 / ODF2 Rabbit Monoclonal Antibody - Images

Western blot analysis of Cenexin1/ODF2 expression in HeLa cell lysate.



All lanes use the Antibody at 1:2K dilution for 1 hour at room temperature.