

Anti-TRPC1 Rabbit Monoclonal Antibody
Catalog # ABO15535**Specification**

Anti-TRPC1 Rabbit Monoclonal Antibody - Product Information

Application	WB
Primary Accession	P48995
Host	Rabbit
Isotype	IgG
Reactivity	Rat, Human, Mouse
Clonality	Monoclonal
Format	Liquid

Description

Anti-TRPC1 Rabbit Monoclonal Antibody . Tested in WB application. This antibody reacts with Human, Mouse, Rat.

Anti-TRPC1 Rabbit Monoclonal Antibody - Additional Information

Gene ID 7220

Other Names

Short transient receptor potential channel 1, TrpC1, Transient receptor protein 1, TRP-1, TRPC1, TRP1

Calculated MW

120 kDa KDa

Application Details

WB 1:500-1:2000

Contents

Rabbit IgG in phosphate buffered saline, pH 7.4, 150mM NaCl, 0.02% sodium azide and 50% glycerol, 0.4-0.5mg/ml BSA.

Immunogen

A synthesized peptide derived from human TRPC1

Purification

Affinity-chromatography

Storage

Store at -20°C for one year. For short term storage and frequent use, store at 4°C for up to one month. Avoid repeated freeze-thaw cycles.

Anti-TRPC1 Rabbit Monoclonal Antibody - Protein Information

Name TRPC1

Synonyms TRP1**Function**

Forms a receptor-activated non-selective calcium permeant cation channel. Probably is operated by a phosphatidylinositol second messenger system activated by receptor tyrosine kinases or G-protein coupled receptors. Also activated by intracellular calcium store depletion.

Cellular Location

Cell membrane; Multi-pass membrane protein

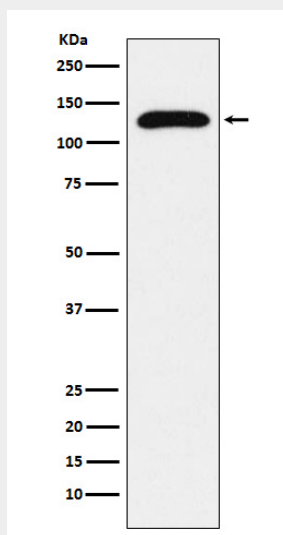
Tissue Location

Seems to be ubiquitous.

Anti-TRPC1 Rabbit Monoclonal Antibody - Protocols

Provided below are standard protocols that you may find useful for product applications.

- [Western Blot](#)
- [Blocking Peptides](#)
- [Dot Blot](#)
- [Immunohistochemistry](#)
- [Immunofluorescence](#)
- [Immunoprecipitation](#)
- [Flow Cytometry](#)
- [Cell Culture](#)

Anti-TRPC1 Rabbit Monoclonal Antibody - Images

Western blot analysis of TRPC1 expression in HepG2 cell lysate.