

**Anti-Dkk3 Rabbit Monoclonal Antibody**  
**Catalog # ABO15541****Specification**

---

**Anti-Dkk3 Rabbit Monoclonal Antibody - Product Information**

Application	WB, IF, ICC, IP
Primary Accession	<a href="#">Q9UBP4</a>
Host	Rabbit
Isotype	IgG
Reactivity	Rat, Human, Mouse
Clonality	Monoclonal
Format	Liquid

**Description**

Anti-Dkk3 Rabbit Monoclonal Antibody . Tested in WB, ICC/IF, IP applications. This antibody reacts with Human, Mouse, Rat.

**Anti-Dkk3 Rabbit Monoclonal Antibody - Additional Information**

**Gene ID** 27122

**Other Names**

Dickkopf-related protein 3, Dickkopf-3, Dkk-3, hDkk-3, DKK3, REIC

**Calculated MW**

60 kDa KDa

**Application Details**

WB 1:500-1:2000<br>ICC/IF 1:50-1:200<br>IP 1:50

**Contents**

Rabbit IgG in phosphate buffered saline, pH 7.4, 150mM NaCl, 0.02% sodium azide and 50% glycerol, 0.4-0.5mg/ml BSA.

**Immunogen**

A synthesized peptide derived from human Dkk3

**Purification**

Affinity-chromatography

**Storage**

**Store at -20°C for one year. For short term storage and frequent use, store at 4°C for up to one month. Avoid repeated freeze-thaw cycles.**

**Anti-Dkk3 Rabbit Monoclonal Antibody - Protein Information**

**Name** DKK3

## Synonyms REIC

### Function

Antagonizes canonical Wnt signaling by inhibiting LRP5/6 interaction with Wnt and by forming a ternary complex with the transmembrane protein KREMEN that promotes internalization of LRP5/6. DKKs play an important role in vertebrate development, where they locally inhibit Wnt regulated processes such as antero-posterior axial patterning, limb development, somitogenesis and eye formation. In the adult, Dkks are implicated in bone formation and bone disease, cancer and Alzheimer disease (By similarity).

### Cellular Location

Secreted.

### Tissue Location

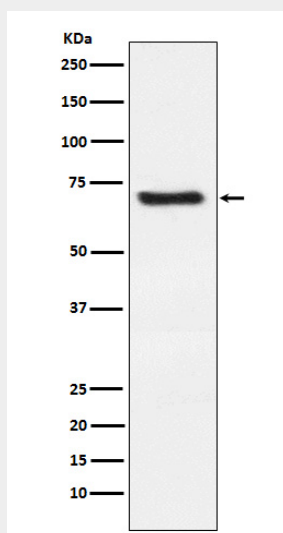
Highest expression in heart, brain, and spinal cord. {ECO:0000269|PubMed:10570958, ECO:0000269|Ref.4}

## Anti-Dkk3 Rabbit Monoclonal Antibody - Protocols

Provided below are standard protocols that you may find useful for product applications.

- [Western Blot](#)
- [Blocking Peptides](#)
- [Dot Blot](#)
- [Immunohistochemistry](#)
- [Immunofluorescence](#)
- [Immunoprecipitation](#)
- [Flow Cytometry](#)
- [Cell Culture](#)

## Anti-Dkk3 Rabbit Monoclonal Antibody - Images



Western blot analysis of Dkk3 expression in Human fetal kidney lysate.