

**Anti-NEK2 Rabbit Monoclonal Antibody**  
**Catalog # ABO15556****Specification**

---

**Anti-NEK2 Rabbit Monoclonal Antibody - Product Information**

Application	WB
Primary Accession	<a href="#">P51955</a>
Host	Rabbit
Isotype	IgG
Reactivity	Human
Clonality	Monoclonal
Format	Liquid

**Description**

Anti-NEK2 Rabbit Monoclonal Antibody . Tested in WB application. This antibody reacts with Human.

**Anti-NEK2 Rabbit Monoclonal Antibody - Additional Information**

**Gene ID** 4751

**Other Names**

Serine/threonine-protein kinase Nek2, 2.7.11.1, HSPK 21, Never in mitosis A-related kinase 2, NimA-related protein kinase 2, NimA-like protein kinase 1, NEK2, NEK2A, NLK1

**Calculated MW**

48 kDa, 44 kDa KDa

**Application Details**

WB 1:500-1:2000

**Contents**

Rabbit IgG in phosphate buffered saline, pH 7.4, 150mM NaCl, 0.02% sodium azide and 50% glycerol, 0.4-0.5mg/ml BSA.

**Immunogen**

A synthesized peptide derived from human NEK2

**Purification**

Affinity-chromatography

Storage

**Store at -20°C for one year. For short term storage and frequent use, store at 4°C for up to one month. Avoid repeated freeze-thaw cycles.**

**Anti-NEK2 Rabbit Monoclonal Antibody - Protein Information**

**Name** NEK2

**Synonyms** NEK2A, NLK1**Function**

Protein kinase which is involved in the control of centrosome separation and bipolar spindle formation in mitotic cells and chromatin condensation in meiotic cells. Regulates centrosome separation (essential for the formation of bipolar spindles and high-fidelity chromosome separation) by phosphorylating centrosomal proteins such as CROCC, CEP250 and NINL, resulting in their displacement from the centrosomes. Regulates kinetochore microtubule attachment stability in mitosis via phosphorylation of NDC80. Involved in regulation of mitotic checkpoint protein complex via phosphorylation of CDC20 and MAD2L1. Plays an active role in chromatin condensation during the first meiotic division through phosphorylation of HMGA2. Phosphorylates: PPP1CC; SGO1; NECAB3 and NPM1. Essential for localization of MAD2L1 to kinetochore and MAPK1 and NPM1 to the centrosome. Phosphorylates CEP68 and CNTLN directly or indirectly (PubMed: <a href="http://www.uniprot.org/citations/24554434" target="\_blank">24554434</a>). NEK2-mediated phosphorylation of CEP68 promotes CEP68 dissociation from the centrosome and its degradation at the onset of mitosis (PubMed: <a href="http://www.uniprot.org/citations/25704143" target="\_blank">25704143</a>). Involved in the regulation of centrosome disjunction (PubMed: <a href="http://www.uniprot.org/citations/26220856" target="\_blank">26220856</a>). Phosphorylates CCDC102B either directly or indirectly which causes CCDC102B to dissociate from the centrosome and allows for centrosome separation (PubMed: <a href="http://www.uniprot.org/citations/30404835" target="\_blank">30404835</a>).

**Cellular Location**

[Isoform 1]: Nucleus. Nucleus, nucleolus. Cytoplasm. Cytoplasm, cytoskeleton, microtubule organizing center, centrosome. Cytoplasm, cytoskeleton, spindle pole Chromosome, centromere, kinetochore. Chromosome, centromere. Note=STK3/MST2 and SAV1 are required for its targeting to the centrosome. Colocalizes with SGO1 and MAD1L1 at the kinetochore Not associated with kinetochore in the interphase but becomes associated with it upon the breakdown of the nuclear envelope. Has a nucleolar targeting/ retention activity via a coiled-coil domain at the C-terminal end [Isoform 4]: Nucleus. Cytoplasm, cytoskeleton, microtubule organizing center, centrosome. Note=Predominantly nuclear

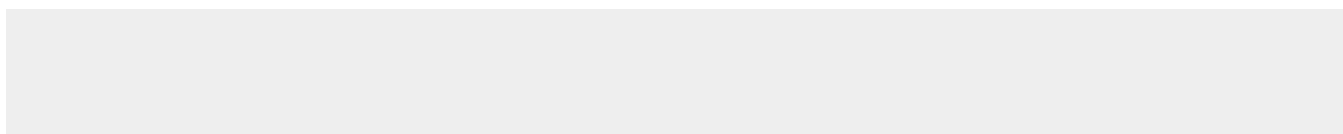
**Tissue Location**

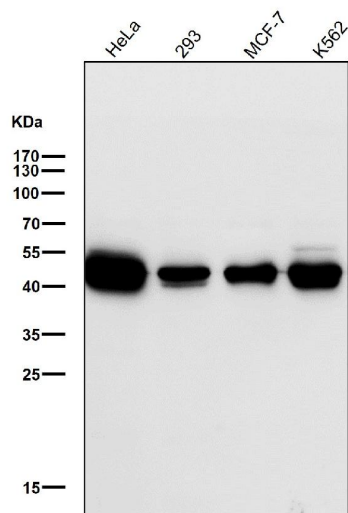
Isoform 1 and isoform 2 are expressed in peripheral blood T-cells and a wide variety of transformed cell types. Isoform 1 and isoform 4 are expressed in the testis. Up-regulated in various cancer cell lines, as well as primary breast tumors

**Anti-NEK2 Rabbit Monoclonal Antibody - Protocols**

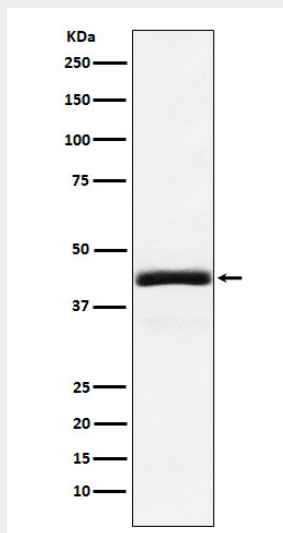
Provided below are standard protocols that you may find useful for product applications.

- [Western Blot](#)
- [Blocking Peptides](#)
- [Dot Blot](#)
- [Immunohistochemistry](#)
- [Immunofluorescence](#)
- [Immunoprecipitation](#)
- [Flow Cytometry](#)
- [Cell Culture](#)

**Anti-NEK2 Rabbit Monoclonal Antibody - Images**



All lanes use the Antibody at 1:1K dilution for 1 hour at room temperature.



Western blot analysis of NEK2 expression in 293T cell lysate.