

Anti-Dlx5 Rabbit Monoclonal Antibody
Catalog # ABO15560**Specification**

Anti-Dlx5 Rabbit Monoclonal Antibody - Product Information

Application	WB, IHC, IF, ICC, IP
Primary Accession	P56178
Host	Rabbit
Isotype	IgG
Reactivity	Rat, Human, Mouse
Clonality	Monoclonal
Format	Liquid

Description

Anti-Dlx5 Rabbit Monoclonal Antibody . Tested in WB, IHC, ICC/IF, IP applications. This antibody reacts with Human, Mouse, Rat.

Anti-Dlx5 Rabbit Monoclonal Antibody - Additional Information

Gene ID 1749

Other Names

Homeobox protein DLX-5, DLX5

Calculated MW

32 kDa KDa

Application Details

WB 1:500-1:2000
IHC 1:100-1:500
ICC/IF 1:100-1:500
IP 1:50

Contents

Rabbit IgG in phosphate buffered saline, pH 7.4, 150mM NaCl, 0.02% sodium azide and 50% glycerol, 0.4-0.5mg/ml BSA.

Immunogen

A synthesized peptide derived from human Dlx5

Purification

Affinity-chromatography

Storage

Store at -20°C for one year. For short term storage and frequent use, store at 4°C for up to one month. Avoid repeated freeze-thaw cycles.

Anti-Dlx5 Rabbit Monoclonal Antibody - Protein Information

Name DLX5

Function

Transcriptional factor involved in bone development. Acts as an immediate early BMP-responsive transcriptional activator essential for osteoblast differentiation. Stimulates ALPL promoter activity in a RUNX2-independent manner during osteoblast differentiation. Stimulates SP7 promoter activity during osteoblast differentiation. Promotes cell proliferation by up-regulating MYC promoter activity. Involved as a positive regulator of both chondrogenesis and chondrocyte hypertrophy in the endochondral skeleton. Binds to the homeodomain-response element of the ALPL and SP7 promoter. Binds to the MYC promoter. Requires the 5'-TAATTA-3' consensus sequence for DNA-binding.

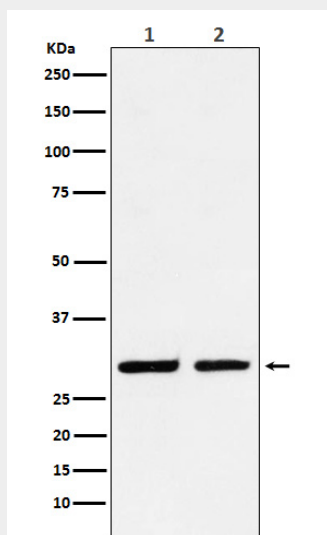
Cellular Location

Nucleus {ECO:0000255|PROSITE-ProRule:PRU00108}.

Anti-Dlx5 Rabbit Monoclonal Antibody - Protocols

Provided below are standard protocols that you may find useful for product applications.

- [Western Blot](#)
- [Blocking Peptides](#)
- [Dot Blot](#)
- [Immunohistochemistry](#)
- [Immunofluorescence](#)
- [Immunoprecipitation](#)
- [Flow Cytometry](#)
- [Cell Culture](#)

Anti-Dlx5 Rabbit Monoclonal Antibody - Images

Western blot analysis of Dlx5 expression in (1) HeLa cell lysate; (2) RAW264.7 cell lysate.