

Anti-FOXL2 Rabbit Monoclonal Antibody
Catalog # ABO15562**Specification**

Anti-FOXL2 Rabbit Monoclonal Antibody - Product Information

Application	WB
Primary Accession	P58012
Host	Rabbit
Isotype	IgG
Reactivity	Human
Clonality	Monoclonal
Format	Liquid

Description

Anti-FOXL2 Rabbit Monoclonal Antibody . Tested in WB application. This antibody reacts with Human.

Anti-FOXL2 Rabbit Monoclonal Antibody - Additional Information

Gene ID 668

Other Names

Forkhead box protein L2, FOXL2

Calculated MW

50 kDa KDa

Application Details

WB 1:500-1:2000

Contents

Rabbit IgG in phosphate buffered saline, pH 7.4, 150mM NaCl, 0.02% sodium azide and 50% glycerol, 0.4-0.5mg/ml BSA.

Immunogen

A synthesized peptide derived from human FOXL2

Purification

Affinity-chromatography

Storage

Store at -20°C for one year. For short term storage and frequent use, store at 4°C for up to one month. Avoid repeated freeze-thaw cycles.

Anti-FOXL2 Rabbit Monoclonal Antibody - Protein Information

Name FOXL2

Function

Transcriptional regulator. Critical factor essential for ovary differentiation and maintenance, and repression of the genetic program for somatic testis determination. Prevents trans- differentiation of ovary to testis through transcriptional repression of the Sertoli cell-promoting gene SOX9 (By similarity). Has apoptotic activity in ovarian cells. Suppresses ESR1-mediated transcription of PTGS2/COX2 stimulated by tamoxifen (By similarity). Is a regulator of CYP19 expression (By similarity). Participates in SMAD3-dependent transcription of FST via the intronic SMAD-binding element (By similarity). Is a transcriptional repressor of STAR. Activates SIRT1 transcription under cellular stress conditions. Activates transcription of OSR2.

Cellular Location

Nucleus {ECO:0000255|PROSITE-ProRule:PRU00089, ECO:0000269|PubMed:19744555}

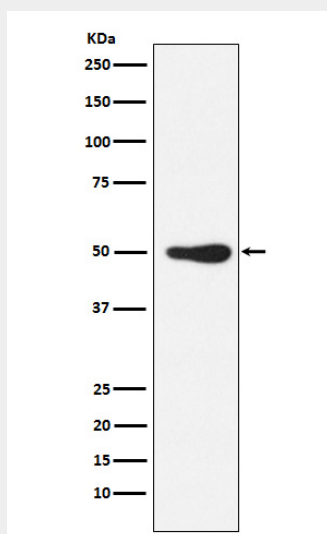
Tissue Location

In addition to its expression in the developing eyelid, it is transcribed very early in somatic cells of the developing gonad (before sex determination) and its expression persists in the follicular cells of the adult ovary

Anti-FOXL2 Rabbit Monoclonal Antibody - Protocols

Provided below are standard protocols that you may find useful for product applications.

- [Western Blot](#)
- [Blocking Peptides](#)
- [Dot Blot](#)
- [Immunohistochemistry](#)
- [Immunofluorescence](#)
- [Immunoprecipitation](#)
- [Flow Cytometry](#)
- [Cell Culture](#)

Anti-FOXL2 Rabbit Monoclonal Antibody - Images

Western blot analysis of FOXL2 expression in Jurkat cell lysate.