

Anti-TRIB3 Rabbit Monoclonal Antibody
Catalog # ABO15579**Specification**

Anti-TRIB3 Rabbit Monoclonal Antibody - Product Information

Application	WB
Primary Accession	Q96RU7
Host	Rabbit
Isotype	IgG
Reactivity	Human
Clonality	Monoclonal
Format	Liquid

Description

Anti-TRIB3 Rabbit Monoclonal Antibody . Tested in WB application. This antibody reacts with Human.

Anti-TRIB3 Rabbit Monoclonal Antibody - Additional Information

Gene ID 57761

Other Names

Tribbles homolog 3, TRB-3, Neuronal cell death-inducible putative kinase, SINK, p65-interacting inhibitor of NF-kappa-B, TRIB3, C20orf97, NIPK, SKIP3, TRB3

Calculated MW

40 kDa KDa

Application Details

WB 1:500-1:2000

Contents

Rabbit IgG in phosphate buffered saline, pH 7.4, 150mM NaCl, 0.02% sodium azide and 50% glycerol, 0.4-0.5mg/ml BSA.

Immunogen

A synthesized peptide derived from human TRIB3

Purification

Affinity-chromatography

Storage

Store at -20°C for one year. For short term storage and frequent use, store at 4°C for up to one month. Avoid repeated freeze-thaw cycles.

Anti-TRIB3 Rabbit Monoclonal Antibody - Protein Information

Name TRIB3

Synonyms C20orf97, NIPK, SKIP3, TRB3**Function**

Inactive protein kinase which acts as a regulator of the integrated stress response (ISR), a process for adaptation to various stress (PubMed:15775988, PubMed:15781252). Inhibits the transcriptional activity of DDIT3/CHOP and is involved in DDIT3/CHOP-dependent cell death during ER stress (PubMed:15775988, PubMed:15781252). May play a role in programmed neuronal cell death but does not appear to affect non-neuronal cells (PubMed:15775988, PubMed:15781252). Acts as a negative feedback regulator of the ATF4-dependent transcription during the ISR: while TRIB3 expression is promoted by ATF4, TRIB3 protein interacts with ATF4 and inhibits ATF4 transcription activity (By similarity). Disrupts insulin signaling by binding directly to Akt kinases and blocking their activation (By similarity). May bind directly to and mask the 'Thr-308' phosphorylation site in AKT1 (By similarity). Interacts with the NF-kappa-B transactivator p65 RELA and inhibits its phosphorylation and thus its transcriptional activation activity (PubMed:12736262). Interacts with MAPK kinases and regulates activation of MAP kinases (PubMed:15299019). Can inhibit APOBEC3A editing of nuclear DNA (PubMed:22977230).

Cellular Location

Nucleus.

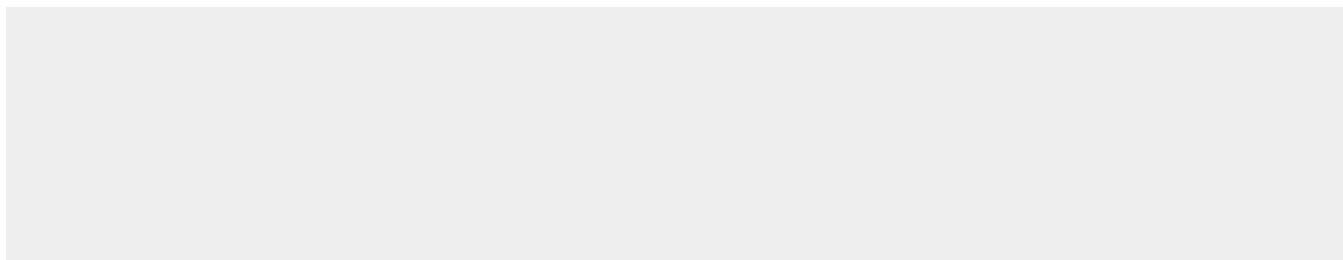
Tissue Location

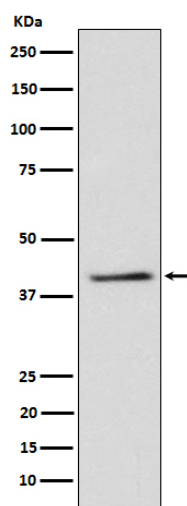
Highest expression in liver, pancreas, peripheral blood leukocytes and bone marrow. Also highly expressed in a number of primary lung, colon and breast tumors. Expressed in spleen, thymus, and prostate and is undetectable in other examined tissues, including testis, ovary, small intestine, colon, leukocyte, heart, brain, placenta, lung, skeletal muscle, and kidney

Anti-TRIB3 Rabbit Monoclonal Antibody - Protocols

Provided below are standard protocols that you may find useful for product applications.

- [Western Blot](#)
- [Blocking Peptides](#)
- [Dot Blot](#)
- [Immunohistochemistry](#)
- [Immunofluorescence](#)
- [Immunoprecipitation](#)
- [Flow Cytometry](#)
- [Cell Culture](#)

Anti-TRIB3 Rabbit Monoclonal Antibody - Images



Western blot analysis of TRIB3 expression in 293T cell lysate.