

**Anti-RAIDD Rabbit Monoclonal Antibody**  
Catalog # ABO15580**Specification****Anti-RAIDD Rabbit Monoclonal Antibody - Product Information**

Application	WB, IF, ICC, IP, FC
Primary Accession	<a href="#">P78560</a>
Host	Rabbit
Isotype	IgG
Reactivity	Rat, Human
Clonality	Monoclonal
Format	Liquid

**Description**

Anti-RAIDD Rabbit Monoclonal Antibody . Tested in WB, ICC/IF, IP, Flow Cytometry applications. This antibody reacts with Human, Rat.

**Anti-RAIDD Rabbit Monoclonal Antibody - Additional Information**

**Gene ID** 8738

**Other Names**

Death domain-containing protein CRADD, Caspase and RIP adapter with death domain, RIP-associated protein with a death domain, CRADD, RAIDD

**Calculated MW**

23 kDa KDa

**Application Details**

WB 1:500-1:2000<br>ICC/IF 1:50-1:200<br>IP 1:50<br>FC 1:50

**Contents**

Rabbit IgG in phosphate buffered saline, pH 7.4, 150mM NaCl, 0.02% sodium azide and 50% glycerol, 0.4-0.5mg/ml BSA.

**Immunogen**

A synthesized peptide derived from human RAIDD

**Purification**

Affinity-chromatography

**Storage**

**Store at -20°C for one year. For short term storage and frequent use, store at 4°C for up to one month. Avoid repeated freeze-thaw cycles.**

**Anti-RAIDD Rabbit Monoclonal Antibody - Protein Information**

**Name** CRADD

## Synonyms RAIDD

### Function

Adapter protein that associates with PIDD1 and the caspase CASP2 to form the PIDDosome, a complex that activates CASP2 and triggers apoptosis (PubMed:<a href="http://www.uniprot.org/citations/15073321" target="\_blank">15073321</a>, PubMed:<a href="http://www.uniprot.org/citations/16652156" target="\_blank">16652156</a>, PubMed:<a href="http://www.uniprot.org/citations/17159900" target="\_blank">17159900</a>, PubMed:<a href="http://www.uniprot.org/citations/17289572" target="\_blank">17289572</a>, PubMed:<a href="http://www.uniprot.org/citations/9044836" target="\_blank">9044836</a>). Also recruits CASP2 to the TNFR-1 signaling complex through its interaction with RIPK1 and TRADD and may play a role in the tumor necrosis factor-mediated signaling pathway (PubMed:<a href="http://www.uniprot.org/citations/8985253" target="\_blank">8985253</a>).

### Cellular Location

Cytoplasm {ECO:0000250|UniProtKB:O88843}. Nucleus {ECO:0000250|UniProtKB:O88843}

### Tissue Location

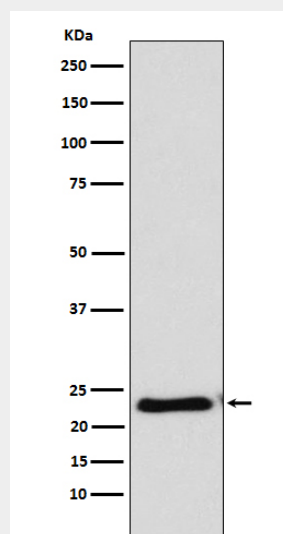
Constitutively expressed in most tissues, with particularly high expression in adult heart, testis, liver, skeletal muscle, fetal liver and kidney.

## Anti-RAIDD Rabbit Monoclonal Antibody - Protocols

Provided below are standard protocols that you may find useful for product applications.

- [Western Blot](#)
- [Blocking Peptides](#)
- [Dot Blot](#)
- [Immunohistochemistry](#)
- [Immunofluorescence](#)
- [Immunoprecipitation](#)
- [Flow Cytometry](#)
- [Cell Culture](#)

## Anti-RAIDD Rabbit Monoclonal Antibody - Images



Western blot analysis of RAIDD expression in HeLa cell lysate.