

Anti-TC10 Rabbit Monoclonal Antibody
Catalog # ABO15584**Specification**

Anti-TC10 Rabbit Monoclonal Antibody - Product Information

Application	WB, IF, ICC
Primary Accession	P17081
Host	Rabbit
Isotype	IgG
Reactivity	Rat, Human
Clonality	Monoclonal
Format	Liquid

Description

Anti-TC10 Rabbit Monoclonal Antibody . Tested in WB, ICC/IF applications. This antibody reacts with Human, Rat.

Anti-TC10 Rabbit Monoclonal Antibody - Additional Information

Gene ID 23433

Other Names

Rho-related GTP-binding protein RhoQ, Ras-like protein TC10, Ras-like protein family member 7A, RHOQ, ARHQ, RASL7A, TC10

Calculated MW

25 kDa KDa

Application Details

WB 1:500-1:2000
ICC/IF 1:50-1:200

Contents

Rabbit IgG in phosphate buffered saline, pH 7.4, 150mM NaCl, 0.02% sodium azide and 50% glycerol, 0.4-0.5mg/ml BSA.

Immunogen

A synthesized peptide derived from human TC10

Purification

Affinity-chromatography

Storage

Store at -20°C for one year. For short term storage and frequent use, store at 4°C for up to one month. Avoid repeated freeze-thaw cycles.

Anti-TC10 Rabbit Monoclonal Antibody - Protein Information

Name RHOQ

Synonyms ARHQ, RASL7A, TC10

Function

Plasma membrane-associated small GTPase which cycles between an active GTP-bound and an inactive GDP-bound state. In active state binds to a variety of effector proteins to regulate cellular responses. Involved in epithelial cell polarization processes. May play a role in CFTR trafficking to the plasma membrane. Causes the formation of thin, actin-rich surface projections called filopodia.

Cellular Location

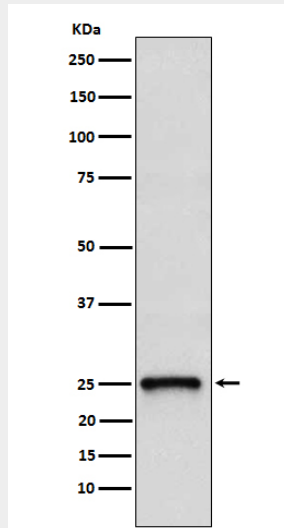
Cytoplasm. Cell membrane; Lipid-anchor

Anti-TC10 Rabbit Monoclonal Antibody - Protocols

Provided below are standard protocols that you may find useful for product applications.

- [Western Blot](#)
- [Blocking Peptides](#)
- [Dot Blot](#)
- [Immunohistochemistry](#)
- [Immunofluorescence](#)
- [Immunoprecipitation](#)
- [Flow Cytometry](#)
- [Cell Culture](#)

Anti-TC10 Rabbit Monoclonal Antibody - Images



Western blot analysis of TC10 expression in 293T cell lysate.