

**Anti-AP2S1 Rabbit Monoclonal Antibody**  
**Catalog # ABO15586****Specification****Anti-AP2S1 Rabbit Monoclonal Antibody - Product Information**

Application	WB, IP, FC
Primary Accession	<a href="#">P53680</a>
Host	Rabbit
Isotype	IgG
Reactivity	Rat, Human, Mouse
Clonality	Monoclonal
Format	Liquid

**Description**

Anti-AP2S1 Rabbit Monoclonal Antibody . Tested in WB, IP, Flow Cytometry applications. This antibody reacts with Human, Mouse, Rat.

**Anti-AP2S1 Rabbit Monoclonal Antibody - Additional Information**

**Gene ID** 1175

**Other Names**

AP-2 complex subunit sigma, Adaptor protein complex AP-2 subunit sigma, Adaptor-related protein complex 2 subunit sigma, Clathrin assembly protein 2 sigma small chain, Clathrin coat assembly protein AP17, Clathrin coat-associated protein AP17, HA2 17 kDa subunit, Plasma membrane adaptor AP-2 17 kDa protein, Sigma2-adaptin, AP2S1 ([http://www.genenames.org/cgi-bin/gene\\_symbol\\_report?hgnc\\_id=565](http://www.genenames.org/cgi-bin/gene_symbol_report?hgnc_id=565)), AP17, CLAPS2

**Calculated MW**

17 kDa KDa

**Application Details**

WB 1:500-1:2000<br>IP 1:50<br>FC 1:50

**Contents**

Rabbit IgG in phosphate buffered saline, pH 7.4, 150mM NaCl, 0.02% sodium azide and 50% glycerol, 0.4-0.5mg/ml BSA.

**Immunogen**

A synthesized peptide derived from human AP2S1

**Purification**

Affinity-chromatography

**Storage**

**Store at -20°C for one year. For short term storage and frequent use, store at 4°C for up to one month. Avoid repeated freeze-thaw cycles.**

## Anti-AP2S1 Rabbit Monoclonal Antibody - Protein Information

**Name** AP2S1 ([HGNC:565](#))

**Synonyms** AP17, CLAPS2

### Function

Component of the adaptor protein complex 2 (AP-2). Adaptor protein complexes function in protein transport via transport vesicles in different membrane traffic pathways. Adaptor protein complexes are vesicle coat components and appear to be involved in cargo selection and vesicle formation. AP-2 is involved in clathrin-dependent endocytosis in which cargo proteins are incorporated into vesicles surrounded by clathrin (clathrin-coated vesicles, CCVs) which are destined for fusion with the early endosome. The clathrin lattice serves as a mechanical scaffold but is itself unable to bind directly to membrane components. Clathrin-associated adaptor protein (AP) complexes which can bind directly to both the clathrin lattice and to the lipid and protein components of membranes are considered to be the major clathrin adaptors contributing the CCV formation. AP-2 also serves as a cargo receptor to selectively sort the membrane proteins involved in receptor-mediated endocytosis. AP-2 seems to play a role in the recycling of synaptic vesicle membranes from the presynaptic surface. AP-2 recognizes Y-X-X-[FILMV] (Y-X-X-Phi) and [ED]-X-X-X-L- [LI] endocytosis signal motifs within the cytosolic tails of transmembrane cargo molecules. AP-2 may also play a role in maintaining normal post-endocytic trafficking through the ARF6-regulated, non- clathrin pathway. The AP-2 alpha and AP-2 sigma subunits are thought to contribute to the recognition of the [ED]-X-X-X-L-[LI] motif (By similarity). May also play a role in extracellular calcium homeostasis.

### Cellular Location

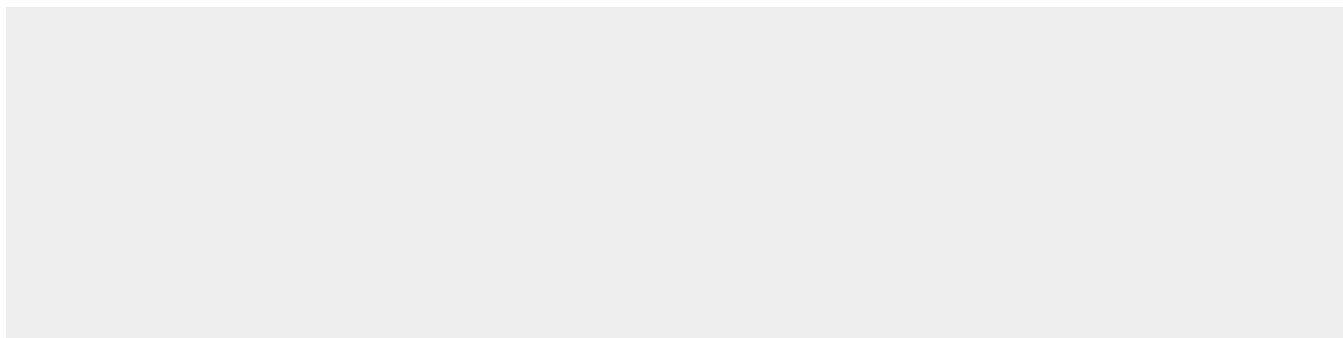
Cell membrane {ECO:0000250|UniProtKB:P63010}. Membrane, coated pit; Peripheral membrane protein; Cytoplasmic side. Note=AP-2 appears to be excluded from internalizing CCVs and to disengage from sites of endocytosis seconds before internalization of the nascent CCV {ECO:0000250|UniProtKB:P63010}

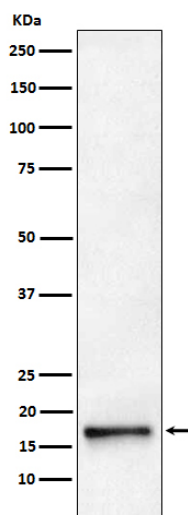
## Anti-AP2S1 Rabbit Monoclonal Antibody - Protocols

Provided below are standard protocols that you may find useful for product applications.

- [Western Blot](#)
- [Blocking Peptides](#)
- [Dot Blot](#)
- [Immunohistochemistry](#)
- [Immunofluorescence](#)
- [Immunoprecipitation](#)
- [Flow Cytometry](#)
- [Cell Culture](#)

## Anti-AP2S1 Rabbit Monoclonal Antibody - Images





Western blot analysis of AP2S1 expression in HeLa cell lysate.