

Anti-GCDFP 15 Rabbit Monoclonal Antibody
Catalog # ABO15609**Specification**

Anti-GCDFP 15 Rabbit Monoclonal Antibody - Product Information

Application	WB, IF, ICC, IP
Primary Accession	P12273
Host	Rabbit
Isotype	IgG
Reactivity	Human
Clonality	Monoclonal
Format	Liquid

Description

Anti-GCDFP 15 Rabbit Monoclonal Antibody . Tested in WB, ICC/IF, IP applications. This antibody reacts with Human.

Anti-GCDFP 15 Rabbit Monoclonal Antibody - Additional Information

Gene ID 5304

Other Names

Prolactin-inducible protein, Gross cystic disease fluid protein 15, GCDFP-15, Prolactin-induced protein, Secretory actin-binding protein, SABP, gp17, PIP, GCDFP15, GPIP4

Calculated MW

17 kDa KDa

Application Details

WB 1:500-1:2000
ICC/IF 1:50-1:200
IP 1:50

Contents

Rabbit IgG in phosphate buffered saline, pH 7.4, 150mM NaCl, 0.02% sodium azide and 50% glycerol, 0.4-0.5mg/ml BSA.

Immunogen

A synthesized peptide derived from human GCDFP 15

Purification

Affinity-chromatography

Storage

Store at -20°C for one year. For short term storage and frequent use, store at 4°C for up to one month. Avoid repeated freeze-thaw cycles.

Anti-GCDFP 15 Rabbit Monoclonal Antibody - Protein Information

Name PIP

Synonyms GCDFP15, GPIP4

Cellular Location
Secreted.

Tissue Location

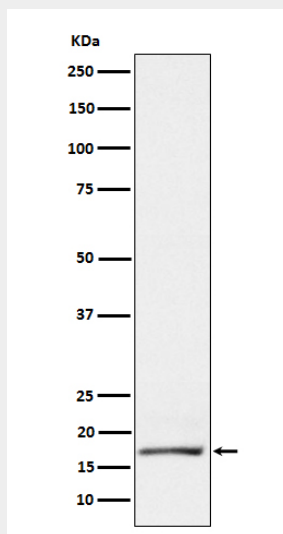
Expressed in pathological conditions of the mammary gland and in several exocrine tissues, such as the lacrimal, salivary, and sweat glands

Anti-GCDFP 15 Rabbit Monoclonal Antibody - Protocols

Provided below are standard protocols that you may find useful for product applications.

- [Western Blot](#)
- [Blocking Peptides](#)
- [Dot Blot](#)
- [Immunohistochemistry](#)
- [Immunofluorescence](#)
- [Immunoprecipitation](#)
- [Flow Cytometry](#)
- [Cell Culture](#)

Anti-GCDFP 15 Rabbit Monoclonal Antibody - Images



Western blot analysis of GCDFP 15 expression in T47D cell lysate.