

Anti-Cripto1 Rabbit Monoclonal Antibody
Catalog # ABO15610**Specification**

Anti-Cripto1 Rabbit Monoclonal Antibody - Product Information

Application	WB, IF, ICC, IP, FC
Primary Accession	P13385
Host	Rabbit
Isotype	IgG
Reactivity	Human
Clonality	Monoclonal
Format	Liquid

Description

Anti-Cripto1 Rabbit Monoclonal Antibody . Tested in WB, ICC/IF, IP, Flow Cytometry applications.
This antibody reacts with Human.

Anti-Cripto1 Rabbit Monoclonal Antibody - Additional Information

Gene ID 6997

Other Names

Protein Cripto, Cripto, EGF-CFC family member {ECO:0000312|HGNC:HGNC:11701}, Cripto-1 growth factor, CRGF, Epidermal growth factor-like cripto protein CR1, Teratocarcinoma-derived growth factor 1, CRIPTO {ECO:0000303|PubMed:2792079, ECO:0000312|HGNC:HGNC:11701}

Calculated MW

21 kDa KDa

Application Details

WB 1:500-1:2000
ICC/IF 1:50-1:200
IP 1:50
FC 1:50

Contents

Rabbit IgG in phosphate buffered saline, pH 7.4, 150mM NaCl, 0.02% sodium azide and 50% glycerol, 0.4-0.5mg/ml BSA.

Immunogen

A synthesized peptide derived from human Cripto1

Purification

Affinity-chromatography

Storage

Store at -20°C for one year. For short term storage and frequent use, store at 4°C for up to one month. Avoid repeated freeze-thaw cycles.

Anti-Cripto1 Rabbit Monoclonal Antibody - Protein Information

Name CRIPTO {ECO:0000303|PubMed:2792079, ECO:0000312|HGNC:HGNC:11701}

Function

GPI-anchored cell membrane protein involved in Nodal signaling. Cell-associated CRIPTO acts as a Nodal coreceptor in cis. Shedding of CRIPTO by TMEM8A modulates Nodal signaling by allowing soluble CRIPTO to act as a Nodal coreceptor on other cells (PubMed:27881714). Could play a role in the determination of the epiblastic cells that subsequently give rise to the mesoderm (PubMed:11909953).

Cellular Location

Cell membrane; Lipid-anchor, GPI-anchor. Secreted. Note=Released from the cell membrane by GPI cleavage.

Tissue Location

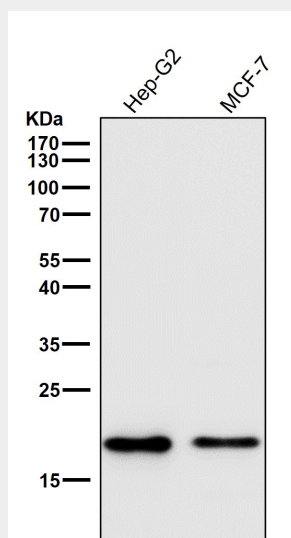
Preferentially expressed in gastric and colorectal carcinomas than in their normal counterparts. Expressed in breast and lung.

Anti-Cripto1 Rabbit Monoclonal Antibody - Protocols

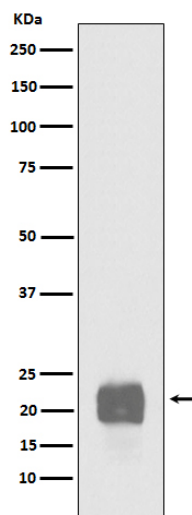
Provided below are standard protocols that you may find useful for product applications.

- [Western Blot](#)
- [Blocking Peptides](#)
- [Dot Blot](#)
- [Immunohistochemistry](#)
- [Immunofluorescence](#)
- [Immunoprecipitation](#)
- [Flow Cytometry](#)
- [Cell Culture](#)

Anti-Cripto1 Rabbit Monoclonal Antibody - Images



All lanes use the Antibody at 1:1K dilution for 1 hour at room temperature.



Western blot analysis of Cripto1 expression in NCCIT cell lysate.