

**Anti-Epac2 Rabbit Monoclonal Antibody**  
**Catalog # ABO15641****Specification**

---

**Anti-Epac2 Rabbit Monoclonal Antibody - Product Information**

Application	WB
Primary Accession	<a href="#">Q8WZA2</a>
Host	Rabbit
Isotype	IgG
Reactivity	Rat, Human, Mouse
Clonality	Monoclonal
Format	Liquid

**Description**

Anti-Epac2 Rabbit Monoclonal Antibody . Tested in WB application. This antibody reacts with Human, Mouse, Rat.

**Anti-Epac2 Rabbit Monoclonal Antibody - Additional Information**

**Gene ID** 11069

**Other Names**

Rap guanine nucleotide exchange factor 4, Exchange factor directly activated by cAMP 2, Exchange protein directly activated by cAMP 2, EPAC 2, cAMP-regulated guanine nucleotide exchange factor II, cAMP-GEFII, RAPGEF4, CGEF2, EPAC2

**Calculated MW**

116 kDa KDa

**Application Details**

WB 1:500-1:2000

**Contents**

Rabbit IgG in phosphate buffered saline, pH 7.4, 150mM NaCl, 0.02% sodium azide and 50% glycerol, 0.4-0.5mg/ml BSA.

**Immunogen**

A synthesized peptide derived from human Epac2

**Purification**

Affinity-chromatography

**Storage**

**Store at -20°C for one year. For short term storage and frequent use, store at 4°C for up to one month. Avoid repeated freeze-thaw cycles.**

**Anti-Epac2 Rabbit Monoclonal Antibody - Protein Information**

**Name** RAPGEF4

**Synonyms** CGEF2, EPAC2

**Function**

Guanine nucleotide exchange factor (GEF) for RAP1A, RAP1B and RAP2A small GTPases that is activated by binding cAMP. Seems not to activate RAB3A. Involved in cAMP-dependent, PKA-independent exocytosis through interaction with RIMS2 (By similarity).

**Cellular Location**

Cytoplasm. Membrane; Peripheral membrane protein

**Tissue Location**

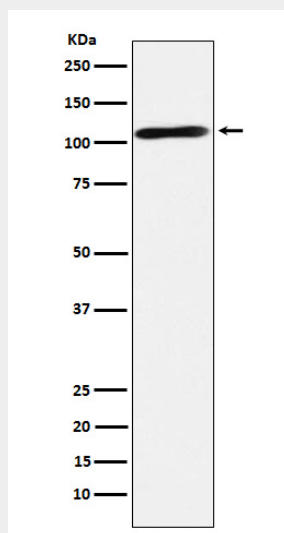
Predominantly expressed in brain and adrenal gland. Isoform 2 is expressed in liver. Isoform 1 is expressed in liver at very low levels

**Anti-Epac2 Rabbit Monoclonal Antibody - Protocols**

Provided below are standard protocols that you may find useful for product applications.

- [Western Blot](#)
- [Blocking Peptides](#)
- [Dot Blot](#)
- [Immunohistochemistry](#)
- [Immunofluorescence](#)
- [Immunoprecipitation](#)
- [Flow Cytometry](#)
- [Cell Culture](#)

**Anti-Epac2 Rabbit Monoclonal Antibody - Images**



Western blot analysis of Epac2 expression in Human fetal brain lysate.