

Anti-Apolipoprotein CI Rabbit Monoclonal Antibody
Catalog # ABO15644**Specification**

Anti-Apolipoprotein CI Rabbit Monoclonal Antibody - Product Information

Application	WB, IHC, IF, ICC, IP, FC
Primary Accession	P02654
Host	Rabbit
Isotype	IgG
Reactivity	Human
Clonality	Monoclonal
Format	Liquid

Description

Anti-Apolipoprotein CI Rabbit Monoclonal Antibody . Tested in WB, IHC, ICC/IF, IP, Flow Cytometry applications. This antibody reacts with Human.

Anti-Apolipoprotein CI Rabbit Monoclonal Antibody - Additional Information

Gene ID 341

Other Names

Apolipoprotein C-I, Apo-CI, ApoC-I, Apolipoprotein C1, Truncated apolipoprotein C-I, APOC1

Calculated MW

9 kDa KDa

Application Details

WB 1:500-1:1000
IHC 1:50-1:200
ICC/IF 1:50-1:200
IP 1:50
FC 1:50

Contents

Rabbit IgG in phosphate buffered saline, pH 7.4, 150mM NaCl, 0.02% sodium azide and 50% glycerol, 0.4-0.5mg/ml BSA.

Immunogen

A synthesized peptide derived from human Apolipoprotein CI

Purification

Affinity-chromatography

Storage

Store at -20°C for one year. For short term storage and frequent use, store at 4°C for up to one month. Avoid repeated freeze-thaw cycles.

Anti-Apolipoprotein CI Rabbit Monoclonal Antibody - Protein Information

Name APOC1

Function

Inhibitor of lipoprotein binding to the low density lipoprotein (LDL) receptor, LDL receptor-related protein, and very low density lipoprotein (VLDL) receptor. Associates with high density lipoproteins (HDL) and the triacylglycerol-rich lipoproteins in the plasma and makes up about 10% of the protein of the VLDL and 2% of that of HDL. Appears to interfere directly with fatty acid uptake and is also the major plasma inhibitor of cholesteryl ester transfer protein (CETP). Binds free fatty acids and reduces their intracellular esterification. Modulates the interaction of APOE with beta-migrating VLDL and inhibits binding of beta-VLDL to the LDL receptor-related protein.

Cellular Location

Secreted.

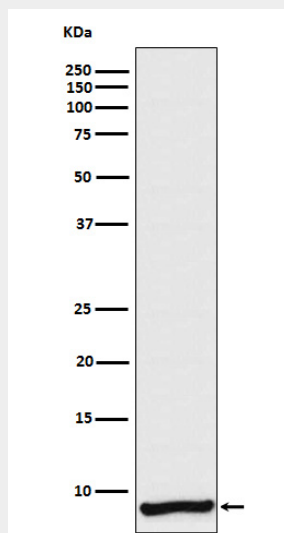
Tissue Location

Synthesized mainly in liver and to a minor degree in intestine. Also found in the lung and spleen

Anti-Apolipoprotein CI Rabbit Monoclonal Antibody - Protocols

Provided below are standard protocols that you may find useful for product applications.

- [Western Blot](#)
- [Blocking Peptides](#)
- [Dot Blot](#)
- [Immunohistochemistry](#)
- [Immunofluorescence](#)
- [Immunoprecipitation](#)
- [Flow Cytometry](#)
- [Cell Culture](#)

Anti-Apolipoprotein CI Rabbit Monoclonal Antibody - Images

Western blot analysis of Apolipoprotein CI expression in Human plasma lysate.