

Anti-FANCA Rabbit Monoclonal Antibody
Catalog # ABO15651**Specification**

Anti-FANCA Rabbit Monoclonal Antibody - Product Information

Application	WB, IP
Primary Accession	O15360
Host	Rabbit
Isotype	IgG
Reactivity	Human
Clonality	Monoclonal
Format	Liquid

Description

Anti-FANCA Rabbit Monoclonal Antibody . Tested in WB, IP applications. This antibody reacts with Human.

Anti-FANCA Rabbit Monoclonal Antibody - Additional Information

Gene ID 2175

Other Names

Fanconi anemia group A protein, Protein FACA, FANCA, FAA, FACA, FANCH

Calculated MW

163 kDa KDa

Application Details

WB 1:500-1:1000
IP 1:40

Contents

Rabbit IgG in phosphate buffered saline, pH 7.4, 150mM NaCl, 0.02% sodium azide and 50% glycerol, 0.4-0.5mg/ml BSA.

Immunogen

A synthesized peptide derived from human FANCA

Purification

Affinity-chromatography

Storage

Store at -20°C for one year. For short term storage and frequent use, store at 4°C for up to one month. Avoid repeated freeze-thaw cycles.

Anti-FANCA Rabbit Monoclonal Antibody - Protein Information

Name FANCA

Synonyms FAA, FACA, FANCH

Function

DNA repair protein that may operate in a postreplication repair or a cell cycle checkpoint function. May be involved in interstrand DNA cross-link repair and in the maintenance of normal chromosome stability.

Cellular Location

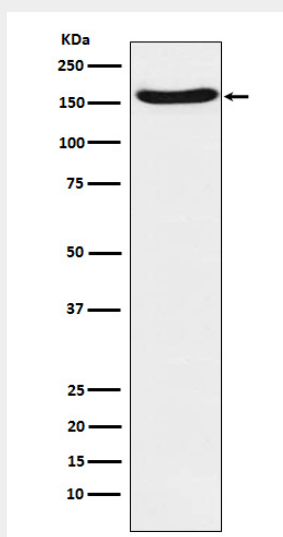
Nucleus. Cytoplasm. Note=The major form is nuclear. The minor form is cytoplasmic

Anti-FANCA Rabbit Monoclonal Antibody - Protocols

Provided below are standard protocols that you may find useful for product applications.

- [Western Blot](#)
- [Blocking Peptides](#)
- [Dot Blot](#)
- [Immunohistochemistry](#)
- [Immunofluorescence](#)
- [Immunoprecipitation](#)
- [Flow Cytometry](#)
- [Cell Culture](#)

Anti-FANCA Rabbit Monoclonal Antibody - Images



Western blot analysis of FANCA expression in A431 cell lysate.