

**Anti-SMC4 Rabbit Monoclonal Antibody**  
**Catalog # ABO15654****Specification**

---

**Anti-SMC4 Rabbit Monoclonal Antibody - Product Information**

Application	WB, IF, ICC, FC
Primary Accession	<a href="#">Q9NTJ3</a>
Host	Rabbit
Isotype	IgG
Reactivity	Human, Mouse
Clonality	Monoclonal
Format	Liquid

**Description**

Anti-SMC4 Rabbit Monoclonal Antibody . Tested in WB, ICC/IF, Flow Cytometry applications. This antibody reacts with Human, Mouse.

**Anti-SMC4 Rabbit Monoclonal Antibody - Additional Information**

**Gene ID** 10051

**Other Names**

Structural maintenance of chromosomes protein 4, SMC protein 4, SMC-4, Chromosome-associated polypeptide C, hCAP-C, XCAP-C homolog, SMC4, CAPC, SMC4L1

**Calculated MW**

180 kDa KDa

**Application Details**

WB 1:500-1:2000<br>ICC/IF 1:50-1:200<br>FC 1:50

**Contents**

Rabbit IgG in phosphate buffered saline, pH 7.4, 150mM NaCl, 0.02% sodium azide and 50% glycerol, 0.4-0.5mg/ml BSA.

**Immunogen**

A synthesized peptide derived from human SMC4

**Purification**

Affinity-chromatography

**Storage**

**Store at -20°C for one year. For short term storage and frequent use, store at 4°C for up to one month. Avoid repeated freeze-thaw cycles.**

**Anti-SMC4 Rabbit Monoclonal Antibody - Protein Information**

**Name** SMC4

**Synonyms** CAPC, SMC4L1

**Function**

Central component of the condensin complex, a complex required for conversion of interphase chromatin into mitotic-like condense chromosomes. The condensin complex probably introduces positive supercoils into relaxed DNA in the presence of type I topoisomerases and converts nicked DNA into positive knotted forms in the presence of type II topoisomerases.

**Cellular Location**

Nucleus. Cytoplasm. Chromosome. Note=In interphase cells, the majority of the condensin complex is found in the cytoplasm, while a minority of the complex is associated with chromatin. A subpopulation of the complex however remains associated with chromosome foci in interphase cells. During mitosis, most of the condensin complex is associated with the chromatin. At the onset of prophase, the regulatory subunits of the complex are phosphorylated by CDC2, leading to condensin's association with chromosome arms and to chromosome condensation. Dissociation from chromosomes is observed in late telophase

**Tissue Location**

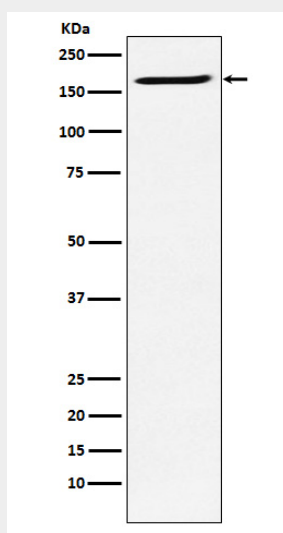
Widely expressed. Higher expression in testis, colon, thymus.

**Anti-SMC4 Rabbit Monoclonal Antibody - Protocols**

Provided below are standard protocols that you may find useful for product applications.

- [Western Blot](#)
- [Blocking Peptides](#)
- [Dot Blot](#)
- [Immunohistochemistry](#)
- [Immunofluorescence](#)
- [Immunoprecipitation](#)
- [Flow Cytometry](#)
- [Cell Culture](#)

**Anti-SMC4 Rabbit Monoclonal Antibody - Images**



Western blot analysis of SMC4 expression in Ramos cell lysate.