

Anti-KLF10 Rabbit Monoclonal Antibody
Catalog # ABO15656**Specification**

Anti-KLF10 Rabbit Monoclonal Antibody - Product Information

| | |
|-------------------|------------------------|
| Application | WB |
| Primary Accession | Q13118 |
| Host | Rabbit |
| Isotype | IgG |
| Reactivity | Rat, Human, Mouse |
| Clonality | Monoclonal |
| Format | Liquid |

Description

Anti-KLF10 Rabbit Monoclonal Antibody . Tested in WB application. This antibody reacts with Human, Mouse, Rat.

Anti-KLF10 Rabbit Monoclonal Antibody - Additional Information

Gene ID 7071

Other Names

Krueppel-like factor 10, EGR-alpha, Transforming growth factor-beta-inducible early growth response protein 1, TGFB-inducible early growth response protein 1, TIEG-1, KLF10, TIEG, TIEG1

Calculated MW

53 kDa KDa

Application Details

WB 1:500-1:2000

Contents

Rabbit IgG in phosphate buffered saline, pH 7.4, 150mM NaCl, 0.02% sodium azide and 50% glycerol, 0.4-0.5mg/ml BSA.

Immunogen

A synthesized peptide derived from human KLF10

Purification

Affinity-chromatography

Storage

Store at -20°C for one year. For short term storage and frequent use, store at 4°C for up to one month. Avoid repeated freeze-thaw cycles.

Anti-KLF10 Rabbit Monoclonal Antibody - Protein Information

Name KLF10

Synonyms TIEG, TIEG1

Function

Transcriptional repressor which binds to the consensus sequence 5'-GGTGTG-3'. Plays a role in the regulation of the circadian clock; binds to the GC box sequence in the promoter of the core clock component ARTNL/BMAL1 and represses its transcriptional activity. Regulates the circadian expression of genes involved in lipogenesis, gluconeogenesis, and glycolysis in the liver. Represses the expression of PCK2, a rate-limiting step enzyme of gluconeogenesis (By similarity). May play a role in the cell cycle regulation.

Cellular Location

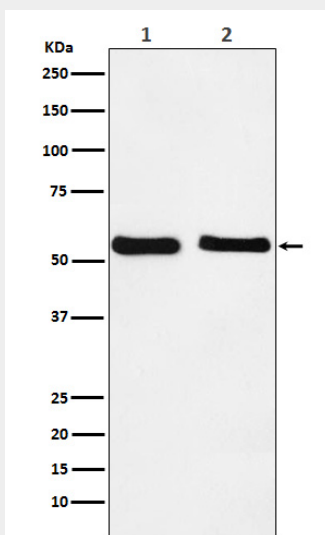
Nucleus {ECO:0000250|UniProtKB:O89091}.

Anti-KLF10 Rabbit Monoclonal Antibody - Protocols

Provided below are standard protocols that you may find useful for product applications.

- [Western Blot](#)
- [Blocking Peptides](#)
- [Dot Blot](#)
- [Immunohistochemistry](#)
- [Immunofluorescence](#)
- [Immunoprecipitation](#)
- [Flow Cytometry](#)
- [Cell Culture](#)

Anti-KLF10 Rabbit Monoclonal Antibody - Images



Western blot analysis of KLF10 expression in (1) HepG2 cell lysate; (2) NIH/3T3 cell lysate.