

Anti-MRC2/ENDO180 Rabbit Monoclonal Antibody
Catalog # ABO15662**Specification**

Anti-MRC2/ENDO180 Rabbit Monoclonal Antibody - Product Information

| | |
|-------------------|------------------------|
| Application | WB |
| Primary Accession | Q9UBG0 |
| Host | Rabbit |
| Isotype | IgG |
| Reactivity | Human |
| Clonality | Monoclonal |
| Format | Liquid |

Description

Anti-MRC2/ENDO180 Rabbit Monoclonal Antibody . Tested in WB application. This antibody reacts with Human.

Anti-MRC2/ENDO180 Rabbit Monoclonal Antibody - Additional Information

Gene ID 9902

Other Names

C-type mannose receptor 2, C-type lectin domain family 13 member E, Endocytic receptor 180, Macrophage mannose receptor 2, Urokinase-type plasminogen activator receptor-associated protein, UPAR-associated protein, Urokinase receptor-associated protein, CD280, MRC2, CLEC13E, ENDO180, KIAA0709, UPARAP

Calculated MW

190 kDa KDa

Application Details

WB 1:500-1:2000

Contents

Rabbit IgG in phosphate buffered saline, pH 7.4, 150mM NaCl, 0.02% sodium azide and 50% glycerol, 0.4-0.5mg/ml BSA.

Immunogen

A synthesized peptide derived from human MRC2

Purification

Affinity-chromatography

Storage

Store at -20°C for one year. For short term storage and frequent use, store at 4°C for up to one month. Avoid repeated freeze-thaw cycles.

Anti-MRC2/ENDO180 Rabbit Monoclonal Antibody - Protein Information

Name MRC2**Synonyms** CLEC13E, ENDO180, KIAA0709, UPARAP**Function**

May play a role as endocytotic lectin receptor displaying calcium-dependent lectin activity. Internalizes glycosylated ligands from the extracellular space for release in an endosomal compartment via clathrin-mediated endocytosis. May be involved in plasminogen activation system controlling the extracellular level of PLAUR/PLAU, and thus may regulate protease activity at the cell surface. May contribute to cellular uptake, remodeling and degradation of extracellular collagen matrices. May play a role during cancer progression as well as in other chronic tissue destructive diseases acting on collagen turnover. May participate in remodeling of extracellular matrix cooperating with the matrix metalloproteinases (MMPs).

Cellular Location

Membrane; Single-pass type I membrane protein.

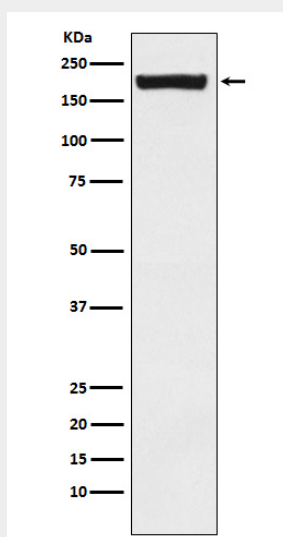
Tissue Location

Ubiquitous with low expression in brain, placenta, lung, kidney, pancreas, spleen, thymus and colon. Expressed in endothelial cells, fibroblasts and macrophages. Highly expressed in fetal lung and kidney.

Anti-MRC2/ENDO180 Rabbit Monoclonal Antibody - Protocols

Provided below are standard protocols that you may find useful for product applications.

- [Western Blot](#)
- [Blocking Peptides](#)
- [Dot Blot](#)
- [Immunohistochemistry](#)
- [Immunofluorescence](#)
- [Immunoprecipitation](#)
- [Flow Cytometry](#)
- [Cell Culture](#)

Anti-MRC2/ENDO180 Rabbit Monoclonal Antibody - Images

Western blot analysis of MRC2/ENDO180 expression in Saos2 cell lysate.