

**Anti-NeuroD2 Rabbit Monoclonal Antibody**  
**Catalog # ABO15664****Specification**

---

**Anti-NeuroD2 Rabbit Monoclonal Antibody - Product Information**

Application	WB
Primary Accession	<a href="#">Q15784</a>
Host	Rabbit
Isotype	IgG
Reactivity	Rat, Human, Mouse
Clonality	Monoclonal
Format	Liquid

**Description**

Anti-NeuroD2 Rabbit Monoclonal Antibody . Tested in WB application. This antibody reacts with Human, Mouse, Rat.

**Anti-NeuroD2 Rabbit Monoclonal Antibody - Additional Information**

**Gene ID** 4761

**Other Names**

Neurogenic differentiation factor 2, NeuroD2, Class A basic helix-loop-helix protein 1, bHLHa1, NeuroD-related factor, NDRF, NEUROD2, BHLHA1, NDRF

**Calculated MW**

48 kDa KDa

**Application Details**

WB 1:500-1:2000

**Contents**

Rabbit IgG in phosphate buffered saline, pH 7.4, 150mM NaCl, 0.02% sodium azide and 50% glycerol, 0.4-0.5mg/ml BSA.

**Immunogen**

A synthesized peptide derived from human NeuroD2

**Purification**

Affinity-chromatography

**Storage**

**Store at -20°C for one year. For short term storage and frequent use, store at 4°C for up to one month. Avoid repeated freeze-thaw cycles.**

**Anti-NeuroD2 Rabbit Monoclonal Antibody - Protein Information**

**Name** NEUROD2

**Synonyms** BHLHA1, NDRF

**Function**

Transcriptional regulator implicated in neuronal determination. Mediates calcium-dependent transcription activation by binding to E box-containing promoter. Critical factor essential for the repression of the genetic program for neuronal differentiation; prevents the formation of synaptic vesicle clustering at active zone to the presynaptic membrane in postmitotic neurons. Induces transcription of ZEB1, which in turn represses neuronal differentiation by down- regulating REST expression. Plays a role in the establishment and maturation of thalamocortical connections; involved in the segregation of thalamic afferents into distinct barrel domains within layer VI of the somatosensory cortex. Involved in the development of the cerebellar and hippocampal granular neurons, neurons in the basolateral nucleus of amygdala and the hypothalamic-pituitary axis. Associates with chromatin to the DPYSL3 E box-containing promoter (By similarity).

**Cellular Location**

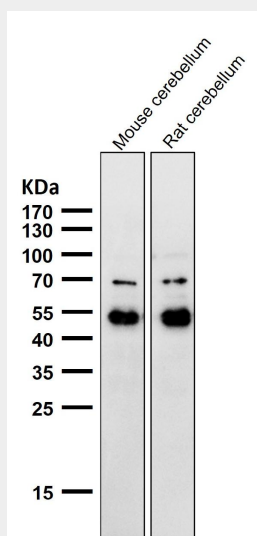
Nucleus {ECO:0000255|PROSITE-ProRule:PRU00981}.

**Anti-NeuroD2 Rabbit Monoclonal Antibody - Protocols**

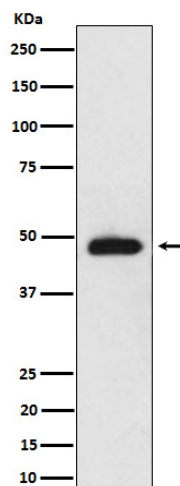
Provided below are standard protocols that you may find useful for product applications.

- [Western Blot](#)
- [Blocking Peptides](#)
- [Dot Blot](#)
- [Immunohistochemistry](#)
- [Immunofluorescence](#)
- [Immunoprecipitation](#)
- [Flow Cytometry](#)
- [Cell Culture](#)

**Anti-NeuroD2 Rabbit Monoclonal Antibody - Images**



All lanes use the Antibody at 1:1K dilution for 1 hour at room temperature.



Western blot analysis of NeuroD2 expression in mouse cerebellum cell lysate.