

Anti-NEK6 Rabbit Monoclonal Antibody
Catalog # ABO15682**Specification****Anti-NEK6 Rabbit Monoclonal Antibody - Product Information**

| | |
|-------------------|------------------------|
| Application | WB, IP |
| Primary Accession | O9HC98 |
| Host | Rabbit |
| Isotype | IgG |
| Reactivity | Rat, Human, Mouse |
| Clonality | Monoclonal |
| Format | Liquid |

Description

Anti-NEK6 Rabbit Monoclonal Antibody . Tested in WB, IP applications. This antibody reacts with Human, Mouse, Rat.

Anti-NEK6 Rabbit Monoclonal Antibody - Additional Information

Gene ID 10783

Other Names

Serine/threonine-protein kinase Nek6, 2.7.11.34, Never in mitosis A-related kinase 6, NimA-related protein kinase 6, Protein kinase SID6-1512, NEK6 ([HGNC:7749](http://www.genenames.org/cgi-bin/gene_symbol_report?hgnc_id=7749))

Calculated MW

28 kDa KDa

Application Details

WB 1:500-1:2000
IP 1:50

Contents

Rabbit IgG in phosphate buffered saline, pH 7.4, 150mM NaCl, 0.02% sodium azide and 50% glycerol, 0.4-0.5mg/ml BSA.

Immunogen

A synthesized peptide derived from human NEK6

Purification

Affinity-chromatography

Storage

Store at -20°C for one year. For short term storage and frequent use, store at 4°C for up to one month. Avoid repeated freeze-thaw cycles.

Anti-NEK6 Rabbit Monoclonal Antibody - Protein Information

Name NEK6 ([HGNC:7749](#))

Function

Protein kinase which plays an important role in mitotic cell cycle progression (PubMed:[11516946](http://www.uniprot.org/citations/11516946), PubMed:[14563848](http://www.uniprot.org/citations/14563848)). Required for chromosome segregation at metaphase-anaphase transition, robust mitotic spindle formation and cytokinesis (PubMed:[19414596](http://www.uniprot.org/citations/19414596)). Phosphorylates ATF4, CIRSR, PTN, RAD26L, RBBP6, RPS7, RPS6KB1, TRIP4, STAT3 and histones H1 and H3 (PubMed:[12054534](http://www.uniprot.org/citations/12054534), PubMed:[20873783](http://www.uniprot.org/citations/20873783)). Phosphorylates KIF11 to promote mitotic spindle formation (PubMed:[19001501](http://www.uniprot.org/citations/19001501)). Involved in G2/M phase cell cycle arrest induced by DNA damage (PubMed:[18728393](http://www.uniprot.org/citations/18728393)). Inhibition of activity results in apoptosis. May contribute to tumorigenesis by suppressing p53/TP53-induced cancer cell senescence (PubMed:[21099361](http://www.uniprot.org/citations/21099361)). Phosphorylates EML4 at 'Ser-144', promoting its dissociation from microtubules during mitosis which is required for efficient chromosome congression (PubMed:[31409757](http://www.uniprot.org/citations/31409757)).

Cellular Location

Cytoplasm. Nucleus. Nucleus speckle. Cytoplasm, cytoskeleton, microtubule organizing center, centrosome. Cytoplasm, cytoskeleton, spindle pole. Note=Colocalizes with APBB1 at the nuclear speckles. Colocalizes with PIN1 in the nucleus. Colocalizes with ATF4, CIRSR, ARHGAP33, ANKRA2, CDC42, NEK9, RAD26L, RBBP6, RPS7, TRIP4, RELB and PHF1 in the centrosome. Localizes to spindle microtubules in metaphase and anaphase and to the midbody during cytokinesis

Tissue Location

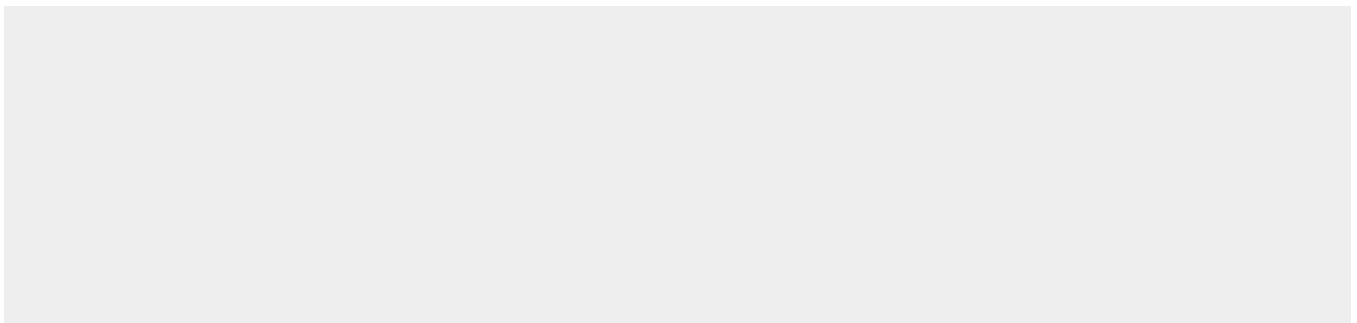
Ubiquitous, with highest expression in heart and skeletal muscle.

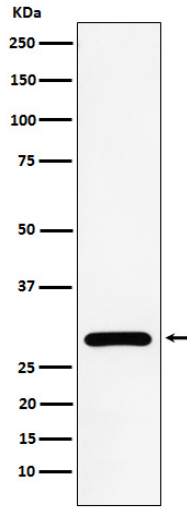
Anti-NEK6 Rabbit Monoclonal Antibody - Protocols

Provided below are standard protocols that you may find useful for product applications.

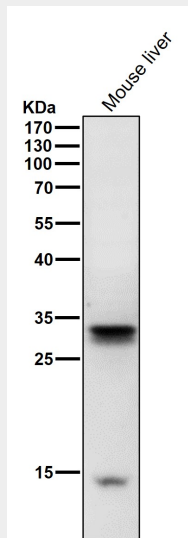
- [Western Blot](#)
- [Blocking Peptides](#)
- [Dot Blot](#)
- [Immunohistochemistry](#)
- [Immunofluorescence](#)
- [Immunoprecipitation](#)
- [Flow Cytometry](#)
- [Cell Culture](#)

Anti-NEK6 Rabbit Monoclonal Antibody - Images

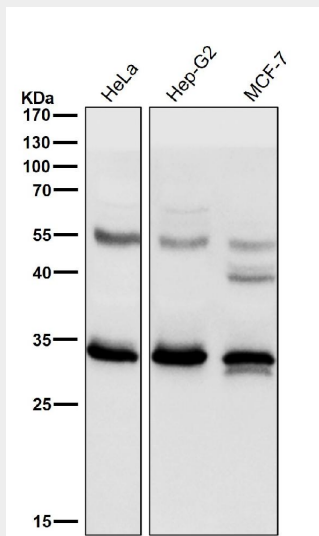




Western blot analysis of NEK6 expression in HeLa cell lysate.



All lanes use the Antibody at 1:3K dilution for 1 hour at room temperature.



All lanes use the Antibody at 1:3K dilution for 1 hour at room temperature.