

Anti-Phospho-ErbB3 (Y1222) Rabbit Monoclonal Antibody
Catalog # ABO15684**Specification****Anti-Phospho-ErbB3 (Y1222) Rabbit Monoclonal Antibody - Product Information**

Application	WB, IF, ICC, IP
Primary Accession	P21860
Host	Rabbit
Isotype	IgG
Reactivity	Human
Clonality	Monoclonal
Format	Liquid

Description

Anti-Phospho-ErbB3 (Y1222) Rabbit Monoclonal Antibody . Tested in WB, ICC/IF, IP applications.
This antibody reacts with Human.

Anti-Phospho-ErbB3 (Y1222) Rabbit Monoclonal Antibody - Additional Information

Gene ID 2065

Other Names

Receptor tyrosine-protein kinase erbB-3, 2.7.10.1, Proto-oncogene-like protein c-ErbB-3, Tyrosine kinase-type cell surface receptor HER3, ERBB3, HER3

Calculated MW

185 kDa KDa

Application Details

WB 1:500-1:2000
ICC/IF 1:50-1:200
IP 1:50

Contents

Rabbit IgG in phosphate buffered saline, pH 7.4, 150mM NaCl, 0.02% sodium azide and 50% glycerol, 0.4-0.5mg/ml BSA.

Immunogen

A synthesized peptide derived from human ErbB3

Purification

Affinity-chromatography

Storage

Store at -20°C for one year. For short term storage and frequent use, store at 4°C for up to one month. Avoid repeated freeze-thaw cycles.

Anti-Phospho-ErbB3 (Y1222) Rabbit Monoclonal Antibody - Protein Information

Name ERBB3

Synonyms HER3**Function**

Tyrosine-protein kinase that plays an essential role as cell surface receptor for neuregulins. Binds to neuregulin-1 (NRG1) and is activated by it; ligand-binding increases phosphorylation on tyrosine residues and promotes its association with the p85 subunit of phosphatidylinositol 3-kinase (PubMed: [20682778](http://www.uniprot.org/citations/20682778)). May also be activated by CSPG5 (PubMed: [15358134](http://www.uniprot.org/citations/15358134)). Involved in the regulation of myeloid cell differentiation (PubMed: [27416908](http://www.uniprot.org/citations/27416908)).

Cellular Location

[Isoform 1]: Cell membrane; Single-pass type I membrane protein

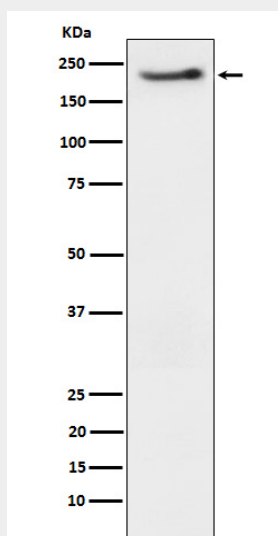
Tissue Location

Epithelial tissues and brain.

Anti-Phospho-ErbB3 (Y1222) Rabbit Monoclonal Antibody - Protocols

Provided below are standard protocols that you may find useful for product applications.

- [Western Blot](#)
- [Blocking Peptides](#)
- [Dot Blot](#)
- [Immunohistochemistry](#)
- [Immunofluorescence](#)
- [Immunoprecipitation](#)
- [Flow Cytometry](#)
- [Cell Culture](#)

Anti-Phospho-ErbB3 (Y1222) Rabbit Monoclonal Antibody - Images

Western blot analysis of Phospho-ErbB3 (Y1222) expression in SKBR3 cell treated with neuregulin.