

Anti-NFIB / NF1B2 Rabbit Monoclonal Antibody
Catalog # ABO15687

Specification

Anti-NFIB / NF1B2 Rabbit Monoclonal Antibody - Product Information

Application	WB, IHC, IF, ICC, IP, FC
Primary Accession	O00712
Host	Rabbit
Isotype	IgG
Reactivity	Rat, Human, Mouse
Clonality	Monoclonal
Format	Liquid

Description

Anti-NFIB / NF1B2 Rabbit Monoclonal Antibody . Tested in WB, IHC, ICC/IF, IP, Flow Cytometry applications. This antibody reacts with Human, Mouse, Rat.

Anti-NFIB / NF1B2 Rabbit Monoclonal Antibody - Additional Information

Gene ID 4781

Other Names

Nuclear factor 1 B-type, NF1-B, Nuclear factor 1/B, CCAAT-box-binding transcription factor, CTF, Nuclear factor I/B, NF-I/B, NFI-B, TGGCA-binding protein, NFIB

Calculated MW

47 kDa KDa

Application Details

WB 1:500-1:2000
IHC 1:50-1:200
ICC/IF 1:50-1:200
IP 1:50
FC 1:50

Contents

Rabbit IgG in phosphate buffered saline, pH 7.4, 150mM NaCl, 0.02% sodium azide and 50% glycerol, 0.4-0.5mg/ml BSA.

Immunogen

A synthesized peptide derived from human NFIB / NF1B2

Purification

Affinity-chromatography

Storage

Store at -20°C for one year. For short term storage and frequent use, store at 4°C for up to one month. Avoid repeated freeze-thaw cycles.

Anti-NFIB / NF1B2 Rabbit Monoclonal Antibody - Protein Information

Name NFIB

Function

Transcriptional activator of GFAP, essential for proper brain development (PubMed:30388402). Recognizes and binds the palindromic sequence 5'-TTGGCNNNNNGCCAA-3' present in viral and cellular promoters and in the origin of replication of adenovirus type 2. These proteins are individually capable of activating transcription and replication.

Cellular Location

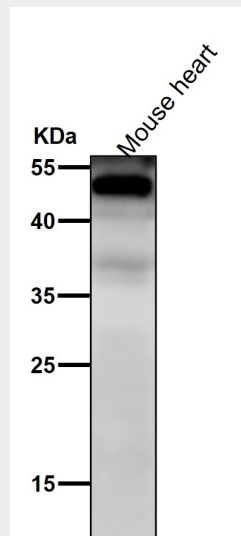
Nucleus.

Anti-NFIB / NF1B2 Rabbit Monoclonal Antibody - Protocols

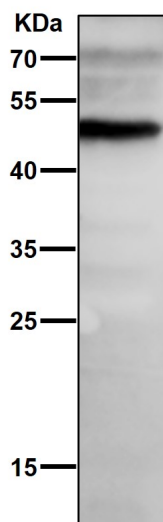
Provided below are standard protocols that you may find useful for product applications.

- [Western Blot](#)
- [Blocking Peptides](#)
- [Dot Blot](#)
- [Immunohistochemistry](#)
- [Immunofluorescence](#)
- [Immunoprecipitation](#)
- [Flow Cytometry](#)
- [Cell Culture](#)

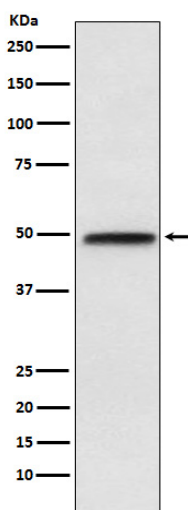
Anti-NFIB / NF1B2 Rabbit Monoclonal Antibody - Images



All lanes use the Antibody at 1:3K dilution for 1 hour at room temperature.



All lanes use the Antibody at 1:3K dilution for 1 hour at room temperature.



Western blot analysis of NFIB / NF1B2 expression in NIH/3T3 cell lysate.